

MANAGEMENT DIRECTION STATEMENT
LADYSMITH BOG ECOLOGICAL RESERVE

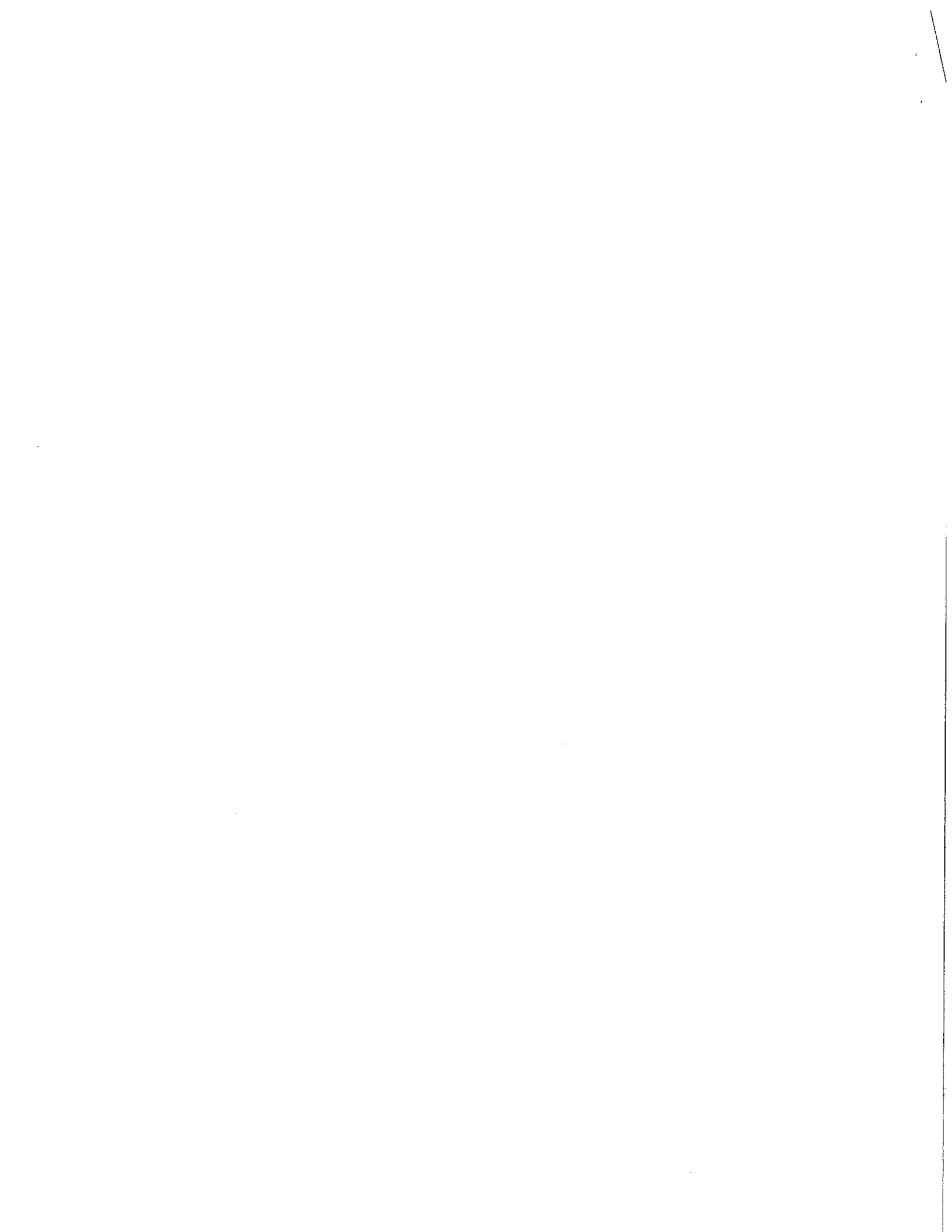
Prepared for:

B.C. Parks
South Coast Region Planning Office

Prepared by:

Terra Firma Environmental Consultants

March 31, 1997



MANAGEMENT DIRECTION STATEMENT - LADYSMITH BOG ECOLOGICAL RESERVE

Approvals Page

Forward

The Provincial Government established Ladysmith Bog Ecological Reserve in recognition of its outstanding conservation, biophysical, and cultural heritage values.

This Management Direction Statement for Ladysmith Bog Ecological Reserve provides management direction until such time as a more detailed management plan is prepared. This action is essential to integrate the biological, social and cultural values for which this park was created with the inherent commitments, traditional uses, and proposed developments on this land base. Management decisions are deliberately conservative to avoid compromising important conservation and cultural heritage values which have not as yet been adequately documented.

Approvals

District Manager
South Vancouver Island District

Assistant Deputy Minister
Parks Management Committee
BC Parks Department

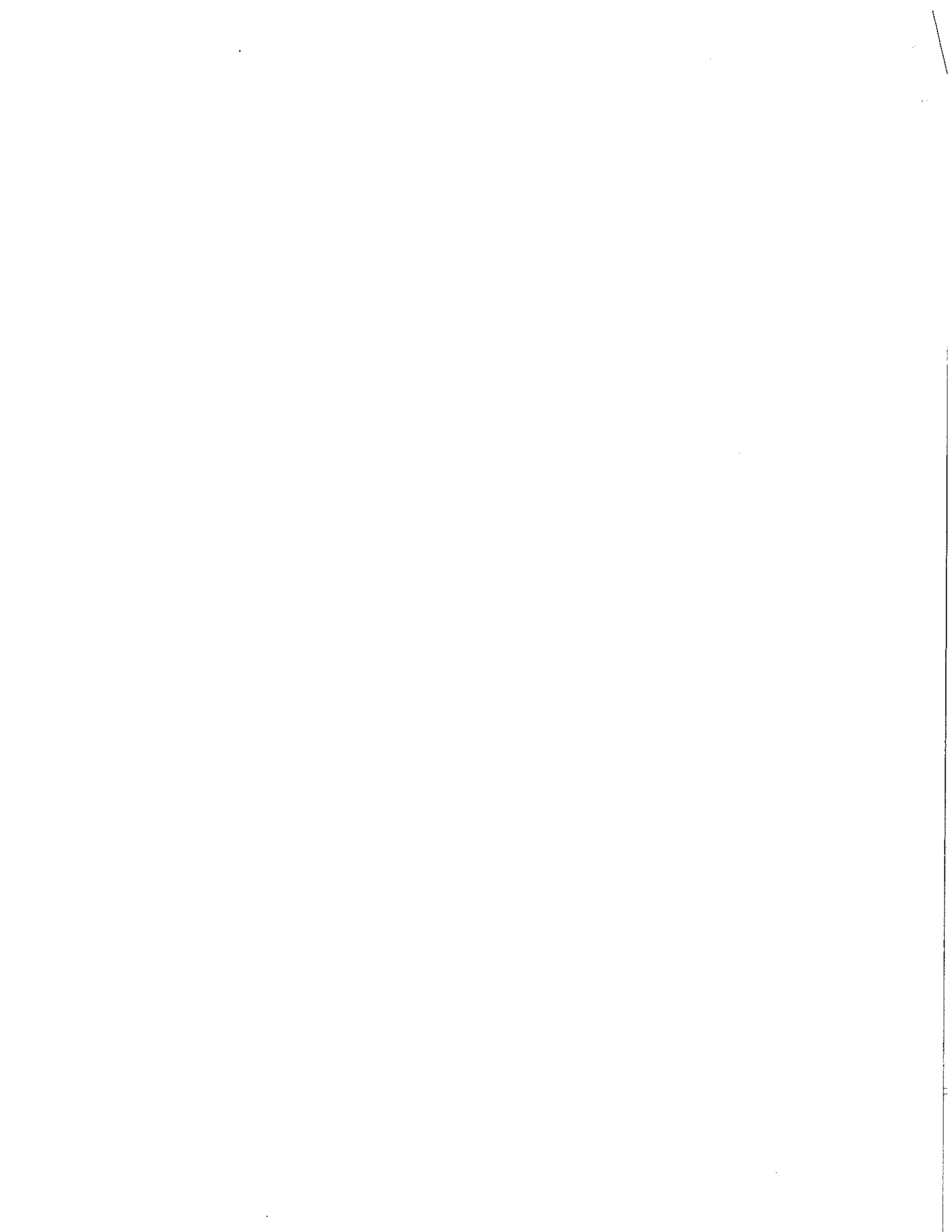


Table of Contents

Approvals

I.	Introduction	
	A.	Setting and Context 1
II.	Protected Area Values	
	A.	Conservation 1
	B.	Recreation and Tourism 3
	C.	Cultural Heritage 3
	D.	Significance in the Protected Areas System 3
III.	Land Uses, Tenures and Interests	
	A.	Access 3
	B.	Tenures 3
	C.	Existing Land Use Activities and Facilities 4
	D.	Adjacent Patterns of Land Use 4
	E.	First Nations Interests 4
	F.	Other Agency Interests 5
	G.	Private and Public Stakeholder Interests 5
IV.	Management Commitments and Issues	
	A.	Management Direction from Previous Planning 5
	B.	Management Issues 5
V.	Management Strategy	
	A.	Priority Management Objectives and Actions 7
	B.	Consultation and Future Planning 8
Appendices		
	A.	Summary Table of Land and Resource Use Commitments
	B.	Background Documents
Figures		
	1.	Protected Area Location



I. INTRODUCTION

A. Setting and Context

Ladysmith Bog Ecological Reserve is located approximately 2 km northwest of Yellow Point and 18 km southeast of Nanaimo. It lies within the Cowichan Valley Regional District, and is bounded on its northern boundary by the Regional District of Nanaimo. The reserve is 141 hectares, including lands covered by water, comprising all of DL 113.

The reserve physically is primarily an extension of rough, stony soil types found in the Yellow Point area, with peat around Long Lake. Drainage generally runs into Long Lake which drains through a stream running southeast. Much of the flowing water is dammed by beaver creating several small ponds and lakes. Priest Lake is fed by a stream from the north and drains through a stream to the northeast, crossed by Yellow Point Road. The reserve has numerous moss-covered bedrock ridges running northwest/southeast, with a fault running perpendicular on the eastern third of the lot.

The Ladysmith Bog Ecological Reserve is situated on some of the last remnants in the region of Crown Provincial Forest. It provides protection for rare plants, sensitive ecosystems including wetlands, bog habitat and mature Douglas Fir forest. Newly created, within a few kilometres, is Woodley Range Ecological Reserve, which protects unique flowering meadows and old growth forest. Hiking opportunities are offered in the other parks in the region, including Roberts Memorial Provincial Park, which offers coastal recreational opportunities, and Hemer Provincial Park, which offers forested upland and lakefront access. Two community parks exist in proximity: one at Yellow Point Community Park, on DL 112 adjacent to the reserve, which offers hiking and horse-back riding trails on forested land; and Blue Heron Park which provides coastal beach access at a triple road right-of-way north of Yellow Point.

II. PROTECTED AREA VALUES

A. Conservation

The area preserves:

- unique botanical association of bog plants;
- two rare plants: Utricularia gibba (Humped Bladderwort), Megalodonta beckii var. beckii (Water Marigold) - blue-listed by Conservation Data Centre;
- sensitive habitats on rock outcrops covered by shallow soils, numerous wetlands and shallow lakes;
- wetlands which protect habitat for waterfowl and aquatic mammals such as beaver and otter;
- lakes with probable populations of small-mouthed bass, pumpkin-seed sunfish and cutthroat trout.

B. Recreation and Tourism

Historically, a network of skid road and game trails were created on L. 113. Locals have used these roads and trails, especially along the north side of Long Lake, and north of the outlet creek. The bog on the western side of Long Lake contains native cranberries which are traditionally harvested locally. Growing levels of recreational activity occurs here, related to the neighbouring trails from Yellow Point Park, and to the general population growth in the district. The aesthetic qualities of the Yellow Point area make it ideally suited to tourism and recreational uses, as seen by the numerous tourist commercial businesses established adjacent to the reserve.

C. Cultural Heritage

The area contained a logging community about 80 years ago, rich in history, and included an early community of Chinese immigrants. The settlement here generally pre-dated the establishment of Ladysmith.

Local research of the historical records indicate the Nanaimo Indian Band moved between winter and summer camps at Priest Lake and Yellow Point. This use ended after tribal wars.

D. Significance in the Protected Areas System

The ecological reserve represents the Coastal Douglas Fir (CDFmm) biogeoclimatic variant, and the Nanaimo Lowlands Ecosession, which in the Protected Area Strategy final analysis enjoys only 1.44% coverage. Furthermore it is one of the few wetland areas preserved in the South Wellington to Yellow Point areas.

III. LAND USES, TENURES AND INTERESTS

A. Access

The Yellow Point area is accessed from the paved Cedar Road and Yellow Point Road off Highway #1, approximately 12 km south of Nanaimo. L. 113 can be entered by trails from public land at the end of Jennifer Drive, on the west side of the reserve, and from L. 112 (Yellow Point Park), on the south boundary.

B. Tenures

Water Licences - 13 water licences are administered by the Ministry of Environment on Priest Lake, and one on Long Lake.

Application for Trail Development

Application had been made to MOF by the local ratepayers association to the Ministry

of Forests to lease lands within the current boundary of the ecological reserve to connect the Long Lake subdivision to the Yellow Point Community Park. MOF, Port Alberni indicated lands in the Provincial forest could not be leased. Formal approval for trail development appears to have been granted to the North Oyster Ratepayers Association, although the signed agreements were not available. Trails were developed using local labour and funds. The Regional District continued to apply to the Ministry of Forests for formal transfer of these lands until 1995 when the Protected Area Strategy process removed this as an option.

C. Existing Land Use Activities and Facilities

Recreation - Trails between Yellow Point Community Park and the Long Lake subdivision have been developed in the reserve, since 1991, as a continuation of trails in the Yellow Point park. Approximately 3.6 km of hiking trail, and multiple use trail were developed. At times of the year, the use levels are quite high. Aside from these developed trails are skid roads and game trails generally following the ridge lines. The condition of these trails are poor, with windthrow abundant. Hiking use is generally low throughout the area. A 2.5 m² swim float is constructed from plastic barrels and moved to the centre of Long Lake. Due to leeches and weeds, very limited local use occurs.

Forestry - The area was originally logged about 80 years ago, with areas of mature cedar, fir and balsam located in the drier upland areas.

Residential Use - The western portion of Long Lake lies on private property of one owner, who has a water licence. Priest Lake similarly lies partly on private lands. Thirteen water licences draw water from the lake.

D. Adjacent Patterns of Land Use

All surrounding lands are private, except the Crown Lands at L. 112 which is leased on a 30 year lease to 2024 by the Regional District for Yellow Point Community Park. Most residential lots are five acres, with some two acre subdivisions on the west side and at Barney Road. Private lots cover half of Priest Lake. To the north are residential lots, and a cattle ranch. The owner of the ranch has reviewed options for subdivision and establishing a trailer/RV park. The owner of the lot adjacent to the reserve and Lot 112/Yellow Point Park has done some draining and excavating for ponds and sells the peat.

E. First Nations Interests

Both the Nanaimo First Nation and the Chemainus First Nation claim this area within their traditional territories. Both are in treaty negotiation. The Chemainus treaty group has indicated its disfavour with the protection of Crown lands during the treaty

negotiation in regard to Woodley Range, and these comments are likely equally relevant for this Reserve.

F. Other Agency Interests

Community Park - Transfer or lease from the Crown to the Cowichan Valley Regional District has been requested since 1991. The Regional District identified L. 113 as a priority area to attain within its park system in the Official Community Plan for nature park and as a groundwater recharge area. The deficiency of adequate recreation trails and open space in the more populated areas was also identified in the OCP. The Nanaimo Regional District supported this proposal.

G. Private and Public Stakeholder Interests

The North Oyster Ratepayers Association appear to have an agreement to establish trails in the southwest area of L.113.

Fourteen water licences have been issued on Long Lake and Priest Lake. Restrictions on new licences have been placed as condition of protected area establishment.

Locals have traditionally harvested cranberries on the peat bog in Long Lake.

IV. MANAGEMENT COMMITMENTS AND ISSUES

A. Management Direction from Previous Planning

The area was managed by the Ministry of Forests, Port Alberni District as part of the Vancouver Island Plantation Forest, and was included in a Woodlot Licence proposal. It appears some agreement was made with the Ratepayers Association to build trails on the southwest corner of L113. Logging occurred approximately 80 years ago on this lot.

B. Management Issues

1. Existing Recreational Use and Trails

The area is sensitive to many uses due to the thin soils covering bedrock and the numerous streams and wetland areas. The trails on the southwest side have been developed according to MOF and Parks Canada standards to minimize impact. Hiking, mountain bike and horseback riding have been allowed. Locals note that commercial horse-riding tours have operated from Yellow Point Park and through L. 113. Horse trailers are often used to bring outside horses in. The reserve is not suited to high levels of use which are reported to occur, and mountain bike and horseback riding are

not suitable for the sensitive environments. Horse droppings could introduce seeds, as well as introduce pathogens into the lake, from which one water licence is drawn.

2. Water Licences

There is one licence on Long Lake for ponds to undertake a trout farm, and 13 licences at Priest Lake (Appendix B). The Priest Lake levels are controlled by a beaver dam, which lies at the north end of the lake. Locals have moved the dam to reduce the flooding impacts on the private lot to the north. The lake has a substantial drainage area, and adequate winter rains, however, the structure does not guarantee water levels. Should water draws be substantial and lake levels low due to dry summers in the area, and/or the dam breached, the surrounding habitat and fish populations could be affected by the reduced water levels.

3. Interception of Drainage on Private Land

Private property on DL 46, Plan 30004, REM 4 (Appendix B) abuts the Yellow Point park and the Ecological Reserve, which according to drainage maps prepared by the North Oyster-Diamond Park and Recreation Commission, appears to intercept a stream (Yellow Point Creek) which historically flowed into Long Lake. The owner (Mr. Mathers) has created a pond and sells peat from this location. If the stream is intercepted, the work contravenes the Water Act where a water licence is needed to undertake any work on a stream, defined to include any "natural water course or source of water supply whether usually containing water or not, or groundwater and a lake, river, creek, ravine, swamp and gulch".

The inlet of Long Lake flows through private land at DL58, L4 (Mr. Michael Coussen). In past years, a float has been placed in the lake to enable swimming. A Water Licence has been held since 1985 to create ponds for raising fish.

4. Crown Land Infringements

A road allowance or public road appears on the Regional District plan map at the west end of Barney Road (DL 36, Plan 4) (Appendix B). A road exists to private lands, which must be transgressed to reach the southeast tip of the ecological reserve. Storing of construction materials occurs at the end of this road. It is uncertain from one field visit whether the road and storage area is on private or Crown lands.

5. Name of the Reserve

Numerous residents and public officials have expressed concern regarding the name of Ladysmith Bog, which has no historic or local significance for the area. The settlement of the area pre-dates the creation of Ladysmith.

6. Wildlife Management

In the past, it appears a local has been contracted to remove beaver from the area where populations were excessive. Locals have also moved dams to reduce flood damage on private lands.

7. Noxious Weed Control

At present, broom is abundant at clearings at the southeast tip of the reserve, and along the east shore of Priest Lake, apparently both outside the reserve. No sites of broom were noted within the reserve.

V. MANAGEMENT STRATEGY

A. Priority Management Objectives and Actions

1. Existing Recreation Use and Trails

Horse-back riding, which occurs primarily on the developed trails, should be excluded from the ecological reserve. Similarly biking, trail biking and off-road vehicles are not allowed. Commercial tours should be disallowed, in particular, commercial horse tours. Hiking should be allowed for nature viewing and educational purposes only on designated trails in the southwest portion of the lot. Trails elsewhere will be open for educational and scientific purposes only by permit.

Some trail work will be required. Various access points may be fenced or barricaded, where necessary, to change public use patterns and establish use on designated trails only. Bike and horse barriers will be installed at key locations. Signage will be needed through the reserve to outline boundaries and restrictions.

B.C. Parks will work with the Cowichan Valley Regional District to control access to the Reserve through Yellow Point Park.

An ecological reserve warden will be sought from applicants in the local area to monitor many aspects of the use and condition of the reserve (e.g. litter, conflicts) and to assist in public education.

2. Water Licences at Priest Lake

The location of the dam in relation to the reserve boundaries, should be determined. BC Environment has not conducted inventory in the lakes, although suspects probable populations of small-mouth bass, pumpkin-seed sunfish and cutthroat trout. Inventory should be conducted and summer levels of water monitored to ensure adequate levels for fish and wildlife.

3. Interception of Drainage on Private Land

Drainage maps should be obtained to verify the major water sources from the North Oyster Ratepayers Association, and other sources. Discussions should be held with the two property owners to ensure continued water supply.

4. Crown Land Infringements

Survey markers should be checked at Barney Road to determine if the existing road is private or public, and, therefore, provides public access and if the storage area should be moved. Other lot boundaries should be checked, where possible.

5. Name of the Reserve

Many concerned local residents appear to have formed a consensus on the name Yellow Point Bog Ecological Reserve (according to conversation with the Electoral Area Director, and members of the Ratepayers and Advisory Planning Commission) (Appendix B).

6. Wildlife Management

The beaver are vital to the ecology of the reserve, and consultation should occur between Ministry of Environment and B.C. Parks before any action to remove beaver or dams occurs.

7. Noxious Weed Control

Current levels of noxious weeds should be assessed from trails and canoe. Existing weeds should be removed, and levels should be monitored. Before further spreading, a major campaign to remove weeds should be initiated to preserve native species.

B. Consultation and Future Planning

Consultation has been restricted due to the time frame of the study. However, members of various public organizations have been contacted for their views on management including the Ratepayers, the Fire Commission, the electoral area director and various other local citizens.

Native bands have not been consulted, although literature was briefly reviewed. Comments from the Chemainus First Nation regarding Woodley Range are likely relevant for Ladysmith Bog.

Appendix A
Summary Table of Land and Resource Use Commitments

Activity/Use/Facility	Acceptable Uses	Comments
Hunting	N	
Fishing	N	
Trapping	N1	If beaver must be removed, they should be removed by Parks staff and relocated.
Grazing (livestock)	N	
Rec Gold Panning/ Rock Hounding	N	
Fossil Collection	N	
Utility Corridors	N	
Communications Sites	N	
Horse Use/Pack Animals	N	
Guide Outfitting (hunting)	N	
Guide Outfitting (fishing)	N	
Guide Outfitting (nature tours)	N	
Guide Outfitting (river rafting)	N/A	
Cat-Assisted Skiing	N/A	
Ski Hills	N/A	
Commercial Recreation (facility-based)	N	
Backcountry Huts	N	
Water Control Structures	N1	Beaver dams serve to control water flows. Where they pose problems, B.C. Parks should be consulted. If a permanent water structure is required at Priest Lake, it should be situated off the reserve, if possible.

Fish Stocking and Enhancement	N	
Road Access	N	
Off-road Access (snowmobiling)	N	
Off-road Access (motorized)	N	
Off-road Access (mechanical activities)	N	
Motorized Water Access	N	
Aircraft Access	N	
Fire Management (suppression)	Y	
Fire Management (prescribed fire management)	N	
Fire Management (prevention)	Y	
Forest Insect/ Disease Control	N	
Noxious Weed Control	N1	Broom and other introduced species should be controlled, where warranted
Exotic Insect/ Disease Control	N	
Scientific Research (specimen collection)	N1	Under permit only
Scientific Research (manipulative activities)	N1	Under permit only
Other? (specify)		

Y = allowed subject to conditions identified in the MDS or management plan;

M = may be permitted if compatible with protected area objectives

N = not allowed

N1 = allowed for expressed management purposes only

N2 = present and allowed to continue but not normally allowed

N/A = not applicable

Appendix B - Background Documents

Ecological Reserve Boundaries

Regional District of Nanaimo Plan Map

Water Licences

Letter Regarding Naming of Ladysmith Bog Ecological Reserve

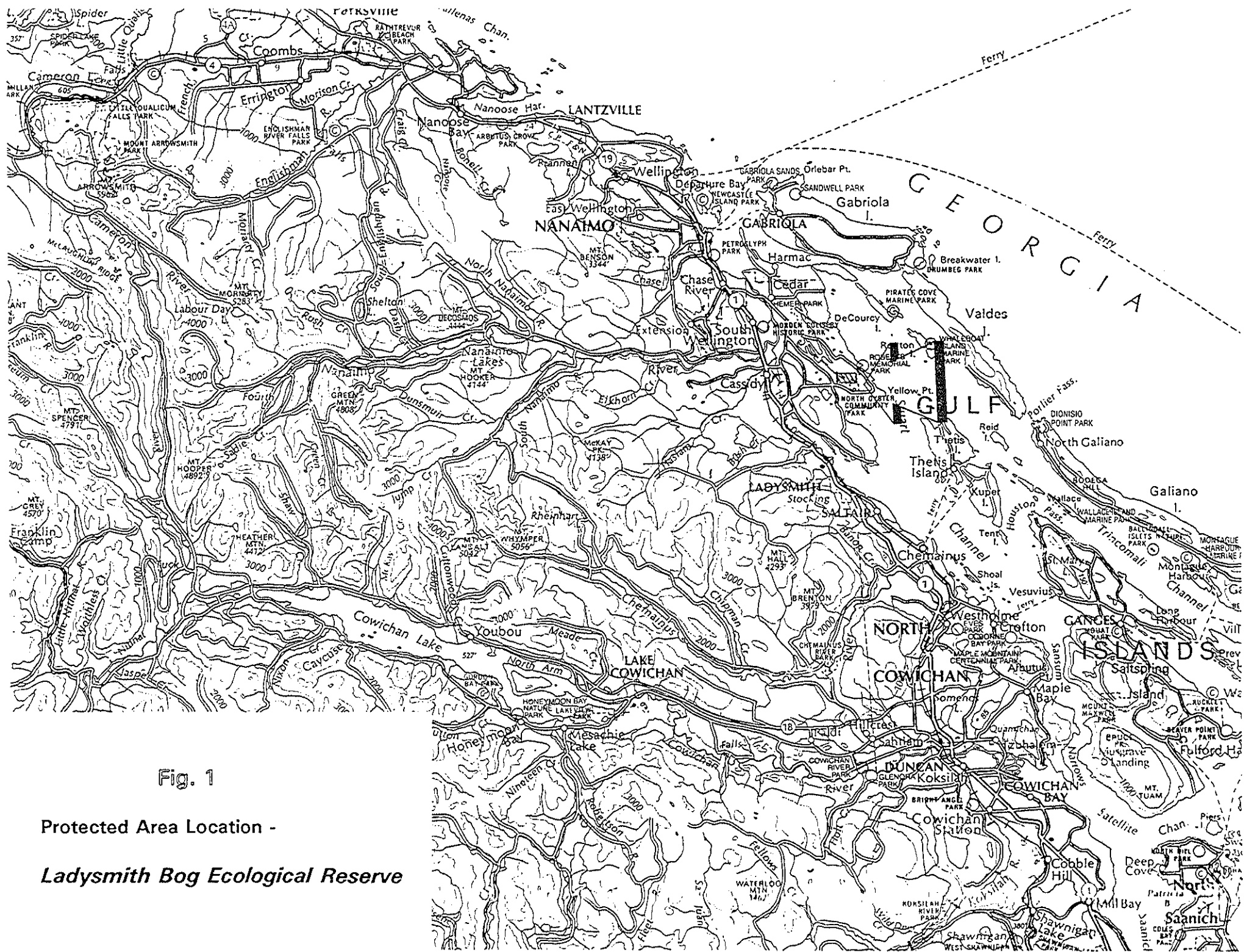
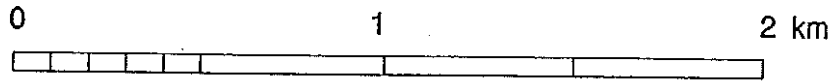


Fig. 1

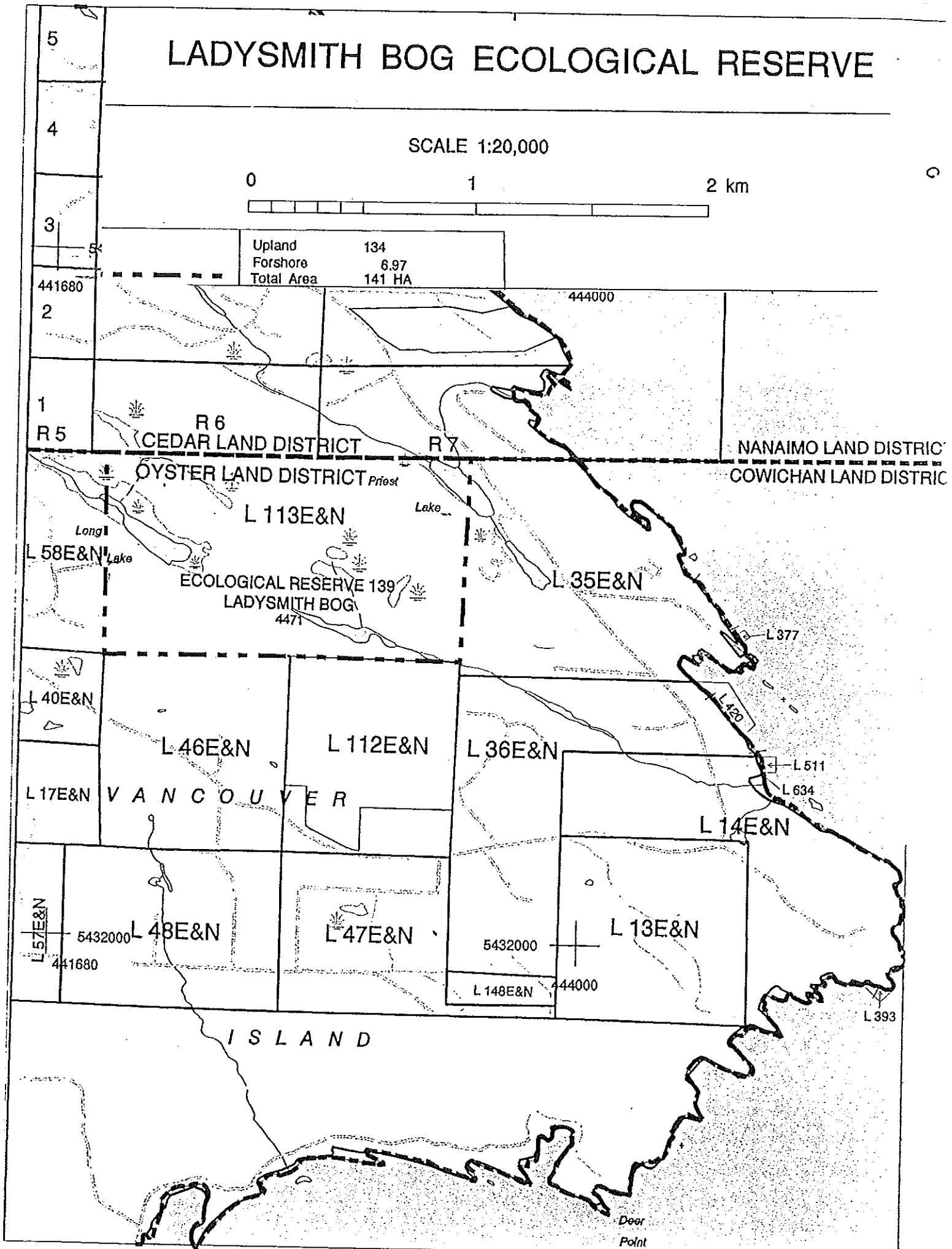
Protected Area Location -
Ladysmith Bog Ecological Reserve

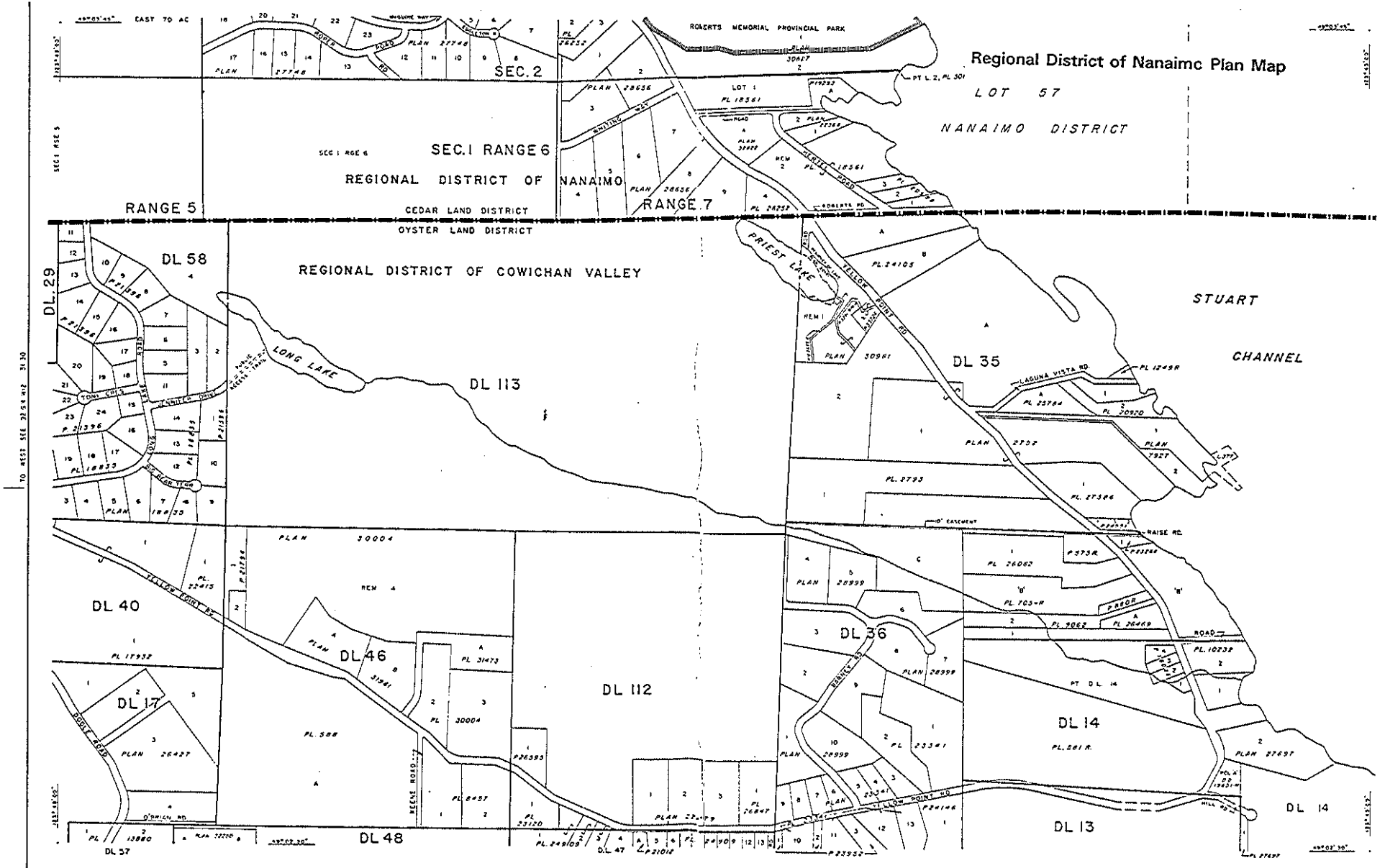
LADYSMITH BOG ECOLOGICAL RESERVE

SCALE 1:20,000



Upland	134
Forshore	6.97
Total Area	141 HA





Regional District of Nanaimo Plan Map

LOT 57
NANAIMO DISTRICT

TO WEST SEE SHEET 3130

3125

3135

Derived from interim base map
R 927/A Ministry of Environment
Surveys and Mapping Branch
Revised to 61234 by TS
Plan no 33724 date 8055

The Regional District of Nanaimo



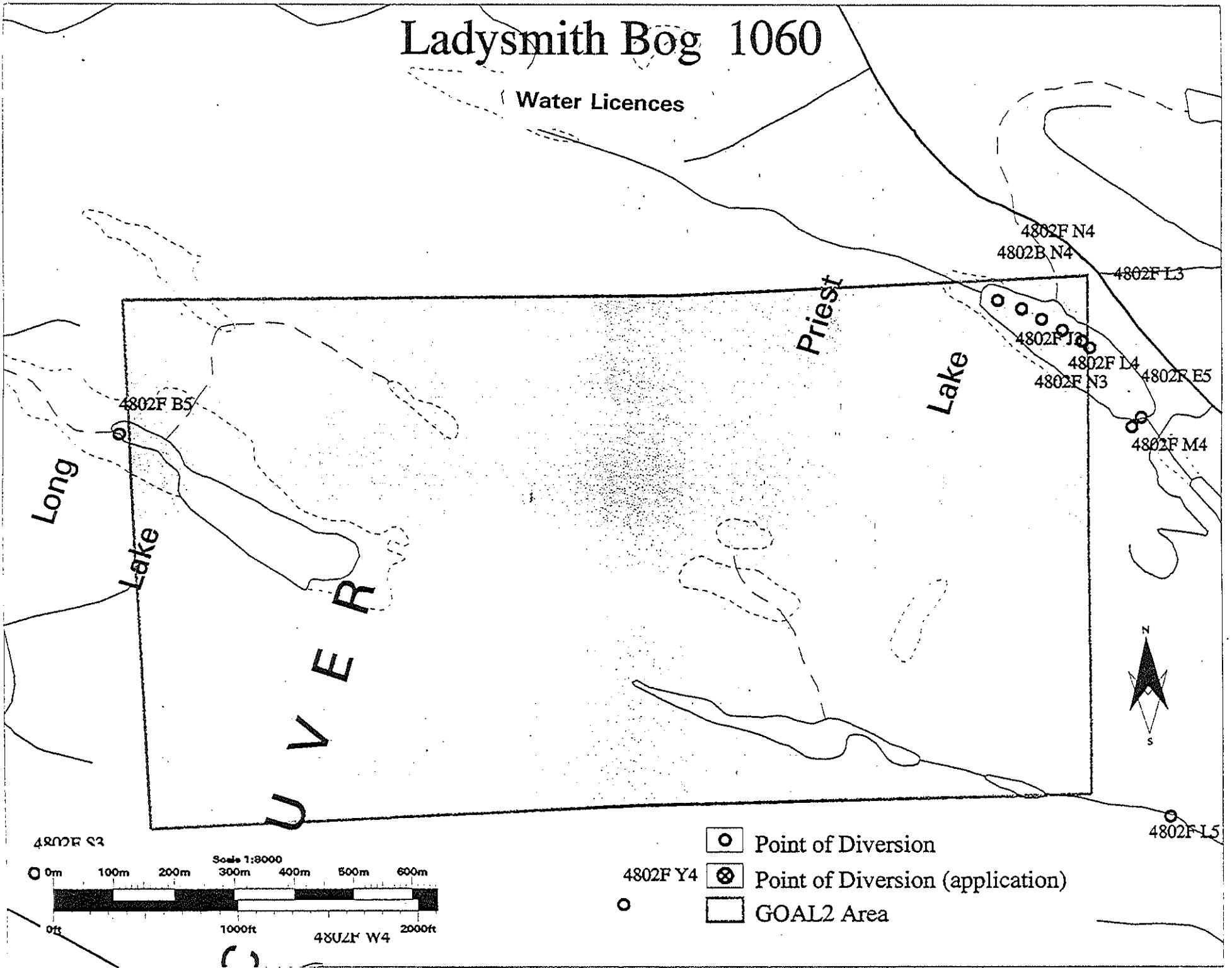
National Topographic System
92G/4W11

ADM Reference
31 31

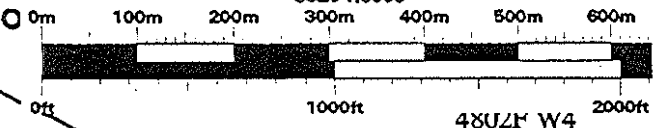
Victoria Land Registration [2]

Ladysmith Bog 1060

Water Licences



4802F C3



○ Point of Diversion

4802F Y4 ⊗ Point of Diversion (application)

○ □ GOAL2 Area

Stream Register Report

Water Licence Information System

DATE: 1997/03/11

TIME: 11:26

PAGE: 002

Priority YYYY/MM/DD	Licence File Number	Appurtenancy Number	Licencee	PUC	Quantity/Units	Term Start	Term End	Licence Comments	Process Status
Source	WR Map	POD	RED	POD Comments				Prec	
1973/03/28	C041652	0316674	PARCEL A (DD 23633N) OYSTER DIST EXC PLAN 15471 & 5758	TWO COVES RESORT LTD 209 158 PROMENADE DR NANAIMO BC V9R6M7	ENTPR	3,000.00	GD Jan 01 Dec 31	RESORT	T/A TRANSFER/APPURT PEND
	Priest Lake	WR4802F	N3	N					17A NAN - NANAIMO
1973/09/18	C105788	0317838	L 1 OF SEC 1 R 7 CEDAR DIST PLAN 18561 EXC PLAN 19293	MORGAN SHEILA G RR 3 3118 YELLOW PT RD LADYSMITH BC V0R2E0	DOM	500.00	GD Jan 01 Dec 31		
	Priest Lake	WR4802F	J3	N					17A NAN - NANAIMO
1974/06/08	C043720	0323204	L 1 OF L 35 OYSTER DIST PLAN 7927	4 ALL SEASONS RESORT LTD 3464 YELLOW POINT RD RR 3 LADYSMITH B C V0R2E0	ENTPR	3,500.00	GD Jan 01 Dec 31	RESORT	
	Priest Lake	WR4802F	N3	N					17A NAN - NANAIMO
1977/09/01	C052800	0341978	7 AC OF L 35 OYSTER DIST LYING E & S OF L 1 PLAN 2793 & W OF PLAN 2752	BROWITT KATHLEEN M 3515 YELLOW POINT RD RR 3 LADYSMITH B C V0R2E0	IRR	7.00	AP Apr 01 Sep 30		
	Priest Lake	WR4802F	L4	N					17A NAN - NANAIMO
1977/10/19	C107148	0342201	LOT 1 DISTRICT LOT 35 OYSTER DISTRICT PLAN VIP54590	STENNING GEORGE RR 3 3395 YELLOWPOINT RD LADYSMITH BC V0R2E0	DOM	1,000.00	GD Jan 01 Dec 31		
	Priest Lake	WR4802F	M4	N					17A NAN - NANAIMO

Priority YYYY/MM/DD	Licence File Number	Appurtenancy Number	Licence#	PUC	Quantity/Units	Term Start	Term End	Licence Comments	Process Status
Source	WR Map	POD	RED POD Comments					Prec	
1968/08/05	F044334	0281486	L 1 SEC 1 R 7 CEDAR DIST PLAN 18561 E MORGAN SHEILA C XC PLAN 19293	IRR	2.80 AF	Apr 01	Sep 30		
Priest Lake	WR4802F	J3	N					17A NAN - NANAIMO	
1969/06/20	C108892	0285802	2 AC LOT A SECTION 1 RANGE 7 CEDAR DISTRICT PLAN 32822	IRR	2.00 AF	Apr 01	Sep 30		
Priest Lake	WR4802F	L3	N					17A NAN - NANAIMO	
1970/08/10	C036910	0296971	PARCEL A (DD 23633N) OF L 35 OYSTER DIST EXC PLAN 5758 & 15471	ENTPR	3,000.00 GD	Jan 01	Dec 31	RESORT	
Priest Lake	WR4802F	N3	N					17A NAN - NANAIMO	
1970/08/10	C036911	0296972	L 1 OF L 35 OYSTER DIST PLAN 7927	ENTPR	3,000.00 GD	Jan 01	Dec 31	RESORT	
Priest Lake	WR4802F	N3	N					17A NAN - NANAIMO	
1973/03/23	C041341	0316639	L 1 OF L 35 OYSTER DIST PLAN 7929	ENTPR	3,500.00 GD	Jan 01	Dec 31	RESORT	
Priest Lake	WR4802F	N3	N					17A NAN - NANAIMO	

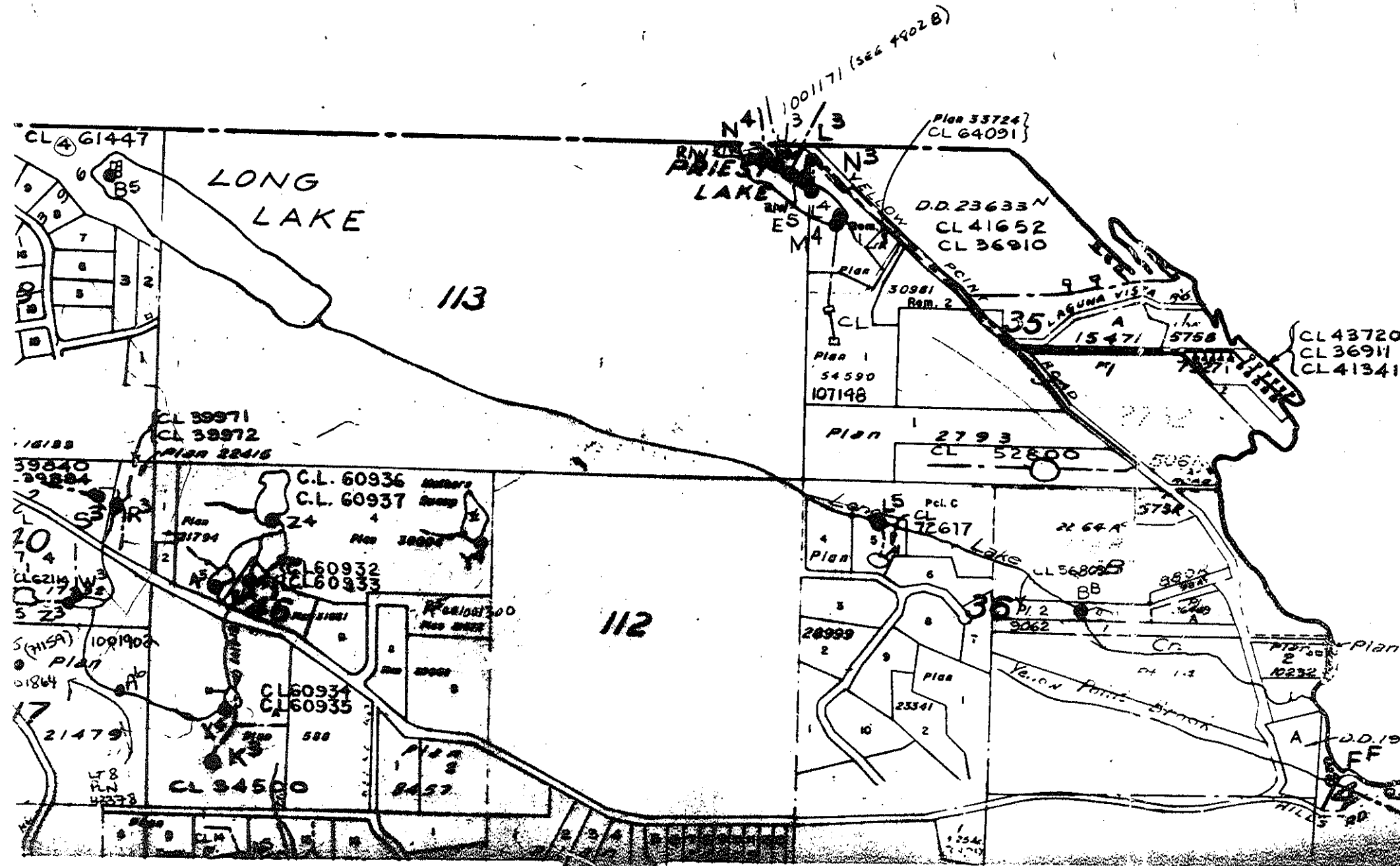
Priority YYYY/MM/DD	Licence File Number	Appurtenancy Number	Licencee	PUC	Quantity/Units	Term Start	Term End	Licence Comments	Process Status
Source	WR Map	POD	RED POD Comments					Proc	
1985/03/14	C061447	1000452	L 4 OF L 58 OYSTER DIST PLAN 21396	COUSSEN MICHAEL A LONG LAKE ROAD RR 3 LADYSMITH BC V0R2E0	PONDS	0.06 AF	Jan 01 Dec 31	FISH CULTURE	
Long Lake	WR4802F	B5	N					17A NAN - NANAIMO	
1953/01/09	C056809	0198069	L 2 OF L 36 OYSTER DIST REF PLAN 9062 EXC PLAN 26469	TOWNSEND WAYNE D & CAROL A 3581 YELLOW PT ROAD RR 3 LADYSMITH B C V0R2E0	DOM	1,000.00 GD	Jan 01 Dec 31		
Long Lake Creek	WR4802F	BB	N					17A NAN - NANAIMO	
1970/03/13	C042789	0296148	0.25 AC OF L A OF L 5 WELLINGTON DIST PLAN 26879	FRYE FRANK F JACKSON THERESA M 4243 CORUNNA AVE NANAIMO BC V9T1Z4	IRR	0.25 AF	Apr 01 Sep 30		
Long Lake Creek Long Lake	WR4802F WR92.F.030.2.2	L5 H	N N					17A NAN - NANAIMO	
1988/02/26	C072617	1000825	L 5 OF L 36 OYSTER DIST PL 28999	PAULING MARK A & DEBRA K 13581 BARNEY RD RR 3 LADYSMITH BC V0R2E0	SW STONP	500.00 GD 1.50 AF	Jan 01 Dec 31 Oct 01 Jun 30	STOR IN DUGOUT	
Long Lake Creek	WR4802F	L5	N					17A NAN - NANAIMO	

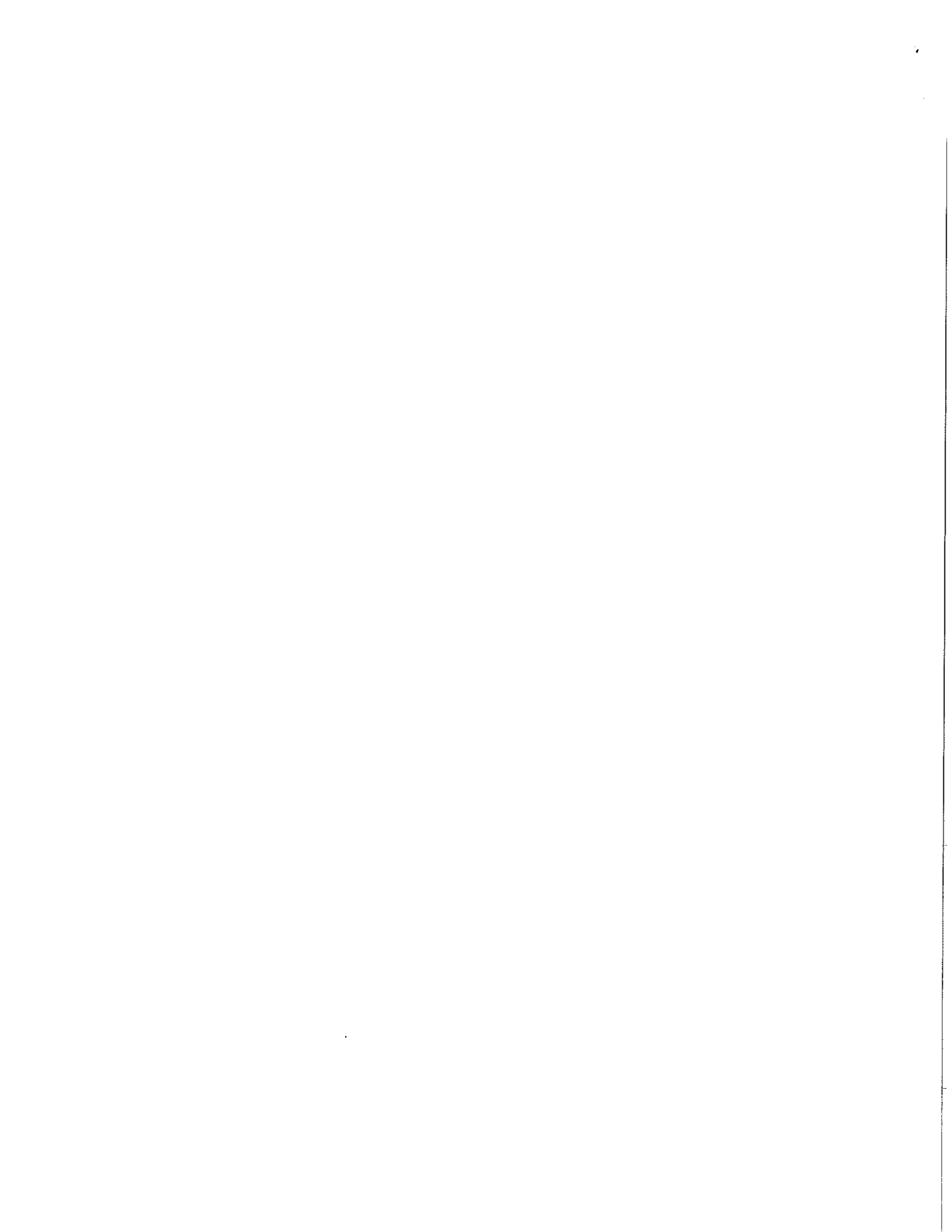
----- Total of 4 Licences Reported -----

Priority YYYY/MM/DD	Licence File Number	Appurtenancy Number	Licencee	PUC	Quantity/Units	Term Start	Term End	Licence Comments	Process Status
Source	WR Map	POD	RED POD Comments					Proc	
1978/05/24	C052443	0364141	L 4 OF SEC 1 R 7 CEDAR DIST PLAN 26252	MORGAN PATRICK & MARGARET C RR 3 YELLOWPOINT RD LADYSMITH BC VOR2E0	DOM	500.00	GD Jan 01 Dec 31		
Priest Lake	WR4802F	N4	N					17A NAN - NANAIMO	
1978/10/12	C107651	0364759	STRATA LOT 1 SEC 2 RGE 7 CEDAR DIST S P 1604	MORGAN JOHN D RR 3 3082 YELLOW POINT RD LADYSMITH BC VOR2E0	DOM	500.00	GD Jan 01 Dec 31		
Priest Lake	WR4802F	J3	N					17A NAN - NANAIMO	
1987/02/20	C064091	1000697	L A OF L 35 OYSTER DIST PLAN 33724 EXC R/W 3291,	DOWNNS KATHLEEN K 3391 YELLOWPOINT RD RR 3 LADYSMITH BC VOR2E0	DOM	500.00	GD Jan 01 Dec 31		
Priest Lake	WR4802F	E5	N					17A NAN - NANAIMO	
1987/10/23	C070361	1000785	L 9 SEC 1 R 7 CEDAR DIST PL 28656	SCHENKER JAMES W & KATHLEEN R RR 3 LADYSMITH BC VOR2E0	DOM	500.00	GD Jan 01 Dec 31		
Priest Lake	WR4802B	N4	N					17A NAN - NANAIMO	
1990/01/09	C100855	1001171	STRATA LOT 2 SEC 1 & 2 RGE 7 CEDAR DI ST STRATA PLAN 1604 AND COMMON PROPERTY	BEAUMONT DIANE S 3090 YELLOWPOINT RD RR 3 LADYSMITH BC VOR2E0	DOM	750.00	GD Jan 01 Dec 31		
Priest Lake	WR4802F	J3	N					17A NAN - NANAIMO	

----- Total of 15 Licences Reported -----

WATER RIGHTS MAP
4802 F





Letter Regarding Naming of Ladysmith Bog Ecological Reserve

FOI

Monday March 10 1997

FAX TO: GENE HNIKA
CONSULTANT, B.C. PARKS

604 452 3476

FAX FROM: PEGGY KOLOSOFF

250 245 8010

SUBJECT: LADYSMITH BOG PROTECTED AREA, DISTRICT LOT 113
COWICHAN VALLEY REGIONAL DISTRICT

I have spoken with members of the local Ratepayers Association and with members of the Advisory Planning Commission concerning the naming of this new protected area. It is the request of the residents of the area that the name should officially be established as the **Yellow Point Bog** (rather than the Ladysmith Bog) because the site is located in the core of the Yellow Point Area, this name accurately reflects it's vicinity, and would promote it's identity.

Please accept this recommendation in your current Management Study.



Peggy Kolosoff
Secretary Advisory Planning Commission
Director North Oyster Ratepayers Association

c.c. Director M. Marcotte, Electoral Area "1" North Oyster/Diamond

LADYSMITH B06 ER

MOD: MISCELLANEOUS

SUB-MOD: MANAGEMENT PLANS