

PAC 6801 Filed under Woodley Range 155-04

*Chris*

85700-35/4

**FILE COPY**

RECEIVED

MAY 15 2001



EAST VANCOUVER ISLANDS GROUP  
Box 1035, DUNCAN, BC.V9L 3Y2  
Phone/Fax 250-746-6659

BC PARKS  
SOUTH VANCOUVER  
ISLAND DISTRICT

To: BC Parks Area Supervisor, Drew Chapman,  
Nanaimo Area,  
South Vancouver Island District,  
2930 Trans Canada Highway,  
Victoria, BC, V9E 1K3.

**COPY**

11 May, 2000.

your File: 85700-22/4455.

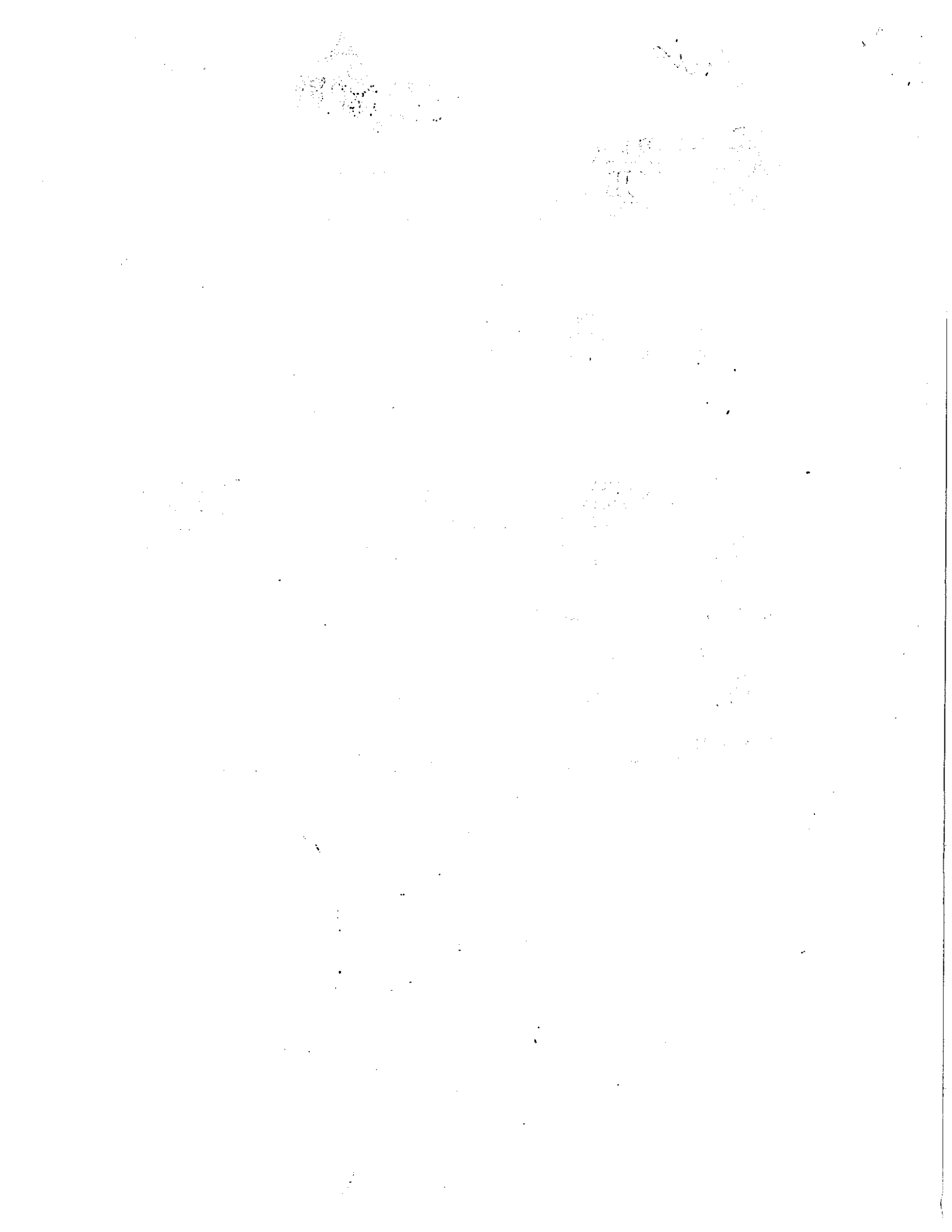
Dear Sirs,

We thank you for the permit for our visit to the Woodley Range Ecological Reserve on May 7, 2000. The Warden, Gary Backlund, conducted our group of 16 members into and through the Reserve for about three and a half hours, on a dry and partly sunny day. We appreciated his patience, and thorough knowledge of this unique area. Please find the plant species observed, as listed by our member Kent Anders, who works out of Nanaimo's Forest District Office. We have given Gary Backlund this list also, at his request.

Sincerely,

*Diana M. Angus*

Diana M. Angus,  
Outings Co-ordinator, Secretary, Conservation Chair.



Diana, attached is the list of plant species as requested that we noted on the Woodley Range ecological reserve trip yesterday. An X indicates species seen. In addition, we saw two fungi: *Omphalina umbellifera* and *Amanita pantherina*.

Gary, thanks for leading the trip. I'd like to come back later in the year if I may and add to the list. I believe that there are over 200 vascular plant species in the reserve because I did not count the grasses due to my uncertainty in identifying them at this time; I'm working on them though.

<<plants2.doc>> (sent by KENT ANDERS (250-752-9271))

COASTAL DOUGLAS-FIR ZONE,  
NON-AQUATIC SPECIES

Location: Woodley Range Ecological Reserve  
Date: May 7, 2000

TREES

- |   |  |
|---|--|
|   | PINACEAE, Pine Family                          |
| _ <i>Tsuga heterophylla</i> , western hemlock   | X <i>Pseudotsuga menziesii</i> , Douglas-fir   |
| X <i>Abies grandis</i> , grand fir              | _ <i>Picea sitchensis</i> , sitka spruce       |
| _ <i>Pinus contorta</i> , shore pine            | _ <i>Pinus monticola</i> , western white pine  |
|   | TAXACEAE, Yew Family                           |
| _ <i>Taxus brevifolia</i> , western yew         |  |
|   | CUPRESSACEAE, Cypress Family                   |
| X <i>Thuja plicata</i> , western redcedar       |  |
|   | BETULACEAE, Birch Family                       |
| X <i>Alnus rubra</i> , red alder                |  |
|   | ACERACEAE, Maple Family                        |
| X <i>Acer macrophyllum</i> , bigleaf maple      |  |
|   | SALICACEAE, Willow Family                      |
| _ <i>Populus balsamifera</i> , black cottonwood | X <i>Populus tremuloides</i> , trembling aspen |
|   | ROSACEAE, Rose Family                          |
| X <i>Prunus emarginata</i> , bitter cherry      | _ <i>Prunus virginiana</i> , choke cherry      |
| X <i>Malus fusca</i> , crab apple               |  |
|   | ERICACEAE, Heather Family                      |
| X <i>Arbutus menziesii</i> , arbutus            |  |
|   | FAGACEAE, Beech Family                         |
| X <i>Quercus garryana</i> , garry oak           |  |
|   | CORNACEAE, Dogwood Family                      |
| _ <i>Cornus nuttallii</i> , dogwood             |  |

SHRUBS & SMALL TREES

- |   |  |
|---|--|
|   | ERICACEAE, Heather Family                            |
| X <i>Gaultheria shallon</i> , salal               | X <i>Vaccinium parvifolium</i> , red huckleberry     |
| _ <i>Vaccinium ovatum</i> , evergreen huckleberry | _ <i>Vaccinium</i>                                   |
| _ <i>Kalmia microphylla</i> , bog-laurel          | _ <i>Andromeda polifolia</i> , bog-rosemary          |
| _ <i>Ledum groenlandicum</i> , Labrador tea       | X <i>Arctostaphylos columbiana</i> , hairy manzanita |
| X <i>Arctostaphylos uva-ursi</i> , kinnikinnick   |  |
|   | EMPETRACEAE, Crowberry Family                        |
| _ <i>Empetrum nigrum</i> , crowberry              |  |
|   | ANACARDIACEAE, Sumach Family                         |
| _ <i>Toxicodendron diversilobum</i> , poison-oak  |  |
|   | CAPRIFOLIACEAE, Honeysuckle Family                   |
| X <i>Linnaea borealis</i> , twinflower            | _ <i>Viburnum edule</i> , squashberry                |
| _ <i>Lonicera involucrata</i> , black twinberry   | X <i>Lonicera hispidula</i> , hairy honeysuckle      |
| X <i>Lonicera ciliosa</i> , orange honeysuckle    |  |

- |  |  |
|--|--|
| _ <i>Sambucus racemosa</i> , red elderberry            | _ <i>Sambucus caerulea</i> , blue elderberry           |
| X <i>Symphoricarpos albus</i> , snowberry              | X <i>Symphoricarpos hesperius</i> , trailing snowberry |
|  | ROSACEAE, Rose Family                                  |
| X <i>Holodiscus discolor</i> , oceanspray              | X <i>Amelanchier alnifolia</i> , Saskatoon             |
| _ <i>Oemleria cerasiformis</i> , Indian-plum           | _ <i>Crataegus douglasii</i> , black hawthorn          |
| _ <i>Crataegus monogyna</i> , common hawthorn          | _ <i>Physocarpus capitatus</i> , ninebark              |
| X <i>Rosa gymnocarpa</i> , baldhip rose                | _ <i>Rosa nutkana</i> , Nootka rose                    |
| _ <i>Rosa pisocarpa</i> , clustered wild rose          | X <i>Rubus spectabilis</i> , salmonberry               |
| _ <i>Rubus leucodermis</i> , black raspberry           | _ <i>Rubus parviflorus</i> , thimbleberry              |
| _ <i>Rubus discolor</i> , Himalayan blackberry         | X <i>Rubus laciniatus</i> , evergreen blackberry       |
| X <i>Rubus ursinus</i> , trailing blackberry           | X <i>Spiraea douglasii</i> , hardhack                  |
| _ <i>Sorbus aucuparia</i> , European mountain-ash      | -  |
| -  | -  |
|  | MYRICACEAE, Sweet Gale Family                          |
| _ <i>Myrica gale</i> , sweet gale                      |  |
|  | ARALIACEAE, Ginseng Family                             |
| _ <i>Oplopanax horridus</i> , devil's club             |  |
|  | FABACEAE, Pea Family                                   |
| X <i>Cytisus scoparius</i> , Scotch broom              | _ <i>Ulex europaeus</i> , gorse                        |
|  | GROSSULARIACEAE, Currant & Gooseberry Family           |
| X <i>Ribes sanguineum</i> , red-flowering currant      | _ <i>Ribes lacustre</i> , black gooseberry             |
| _ <i>Ribes divaricatum</i> , wild gooseberry           | _ <i>Ribes lobbii</i> , gummy gooseberry               |
| _ <i>Ribes bracteosum</i> , stink currant              | _ <i>Ribes laxiflorum</i> , trailing black currant     |
|  | SALICACEAE, Willow Family                              |
| _ <i>Salix hookeriana</i> , Hooker's willow            | _ <i>Salix lucida</i> , Pacific willow                 |
| X <i>Salix</i> spp.                                    | _ <i>Salix geyeriana</i> , Geyer's willow              |
| _ <i>Salix scouleriana</i> , Scouler's willow          | _ <i>Salix sitchensis</i> , sitka willow               |
|  | CORNACEAE, Dogwood Family                              |
| _ <i>Cornus stolonifera</i> , red-osier dogwood        |  |
|  | RHAMNACEAE, Buckthorn Family                           |
| X <i>Rhamnus purshiana</i> , cascara                   |  |
| _ <i>Ceanothus sanguineus</i> , redstem ceanothus      | _ <i>Ceanothus velutinus</i> , snowbrush               |
|  | BETULACEAE, Birch Family                               |
| _ <i>Corylus cornuta</i> , hazelnut                    | _ <i>Betula pendula</i> , European birch               |
|  | ACERACEAE, Maple Family                                |
| _ <i>Acer glabrum</i> , Douglas maple                  |  |
|  | ELAEAGNACEAE, Oleaster Family                          |
| _ <i>Shepherdia canadensis</i> , soapollie             |  |
|  | CUPRESSACEAE, Cypress Family                           |
| _ <i>Juniperus scopulorum</i> , Rocky Mountain juniper |  |
|  | CELASTRACEAE, Staff Tree Family                        |
| X <i>Paxistima myrsinites</i> , falsebox               |  |
|  | BERBERIDACEAE, Barberry Family                         |
| X <i>Mahonia nervosa</i> , dull Oregon-grape           | _ <i>Mahonia aquifolium</i> , tall Oregon-grape        |
| _ <i>Mahonia repens</i> , creeping Oregon-grape        |  |
|  | HYDRANGEACEAE, Hydrangea Family                        |
| _ <i>Philadelphus lewisii</i> , mock-orange            |  |
|  | RANUNCULACEAE, Buttercup Family                        |
| _ <i>Clematis vitalba</i> , traveller's joy            |  |
|  | THYMELAEACEAE  |
| _ <i>Daphne laureola</i> , spurge-laurel               |  |
|  | AQUIFOLIACEAE  |
| _ <i>Ilex aquifolium</i> , English holly               |  |

LILIACEAE, Lily Family

- *Smilacina racemosa*, false solomon's-seal
- *Streptopus amplexifolius*, clasping twistedstalk
- *Disporum hookeri*, Hooker's fairybells
- *Maianthemum dilatatum*, false lily-of-the-valley
- X *Erythronium oregonum*, white fawn lily
- X *Allium acuminatum*, Hooker's onion
- *Allium amplexens*, slimleaf onion
- *Brodiaea hyacinthina*, fool's onion
- X *Camassia quamash*, common camas
- X *Zygadenus venenosus*, death-camas
- *Fritillaria camschatcensis*, rice root
- *Disporum smithii*, Smith's fairybells
- X *Smilacina stellata*, star-flowered false s-s
- *Streptopus roseus*, rosy twistedstalk
- X *Trillium ovatum*, trillium
- *Tofieldia glutinosa*, asphodel
- *Erythronium revolutum*, pink fawn lily
- *Allium cernuum*, nodding onion
- *Allium geyeri* var. *geyeri* & *tenerum*, Geyer's onion
- *Brodiaea coronaria*, harvest brodiaea
- *Camassia leichtlinii*, great camas
- X *Fritillaria lanceolata*, chocolate lily
- *Lilium columbianum*, tiger lily

IRIDACEAE, Iris Family

- *Sisyrinchium idahoense*, blue-eyed-grass
- *Sisyrinchium californicum*, golden-eyed-grass
- *Iris missouriensis*, blue iris
- *Sisyrinchium littorale*, shore blue-eyed-grass
- *Sisyrinchium douglasii*, satin-flower
- *Iris pseudoacorus*, yellow-flag

ORCHIDACEAE, Orchid Family

- *Calypso bulbosa*, fairyslippers
- X *Corallorhiza maculata* spp. *mertensiana*, western coralroot
- *Corallorhiza striata*, striped coralroot
- *Malaxis monophyllos*, one-leaved malaxis
- *Listera caurina*, northwestern twayblade
- *Listera cordata*, heart-leaved twayblade
- *Platanthera stricta*, slender bog-orchid
- *Coeloglossum viride*, frog-orchid
- *Piperia maritima*, seaside rein-orchid
- *Platanthera orbiculata*, round-leaved rein-orchid
- *Cypripedium montanum*, mountain ladyslipper
- X *C. m.* spp. *maculata*, spotted coralroot
- X *Goodyera oblongifolia*, rattlesnake-plantain
- *Platanthera chorisiana*, small bog-orchid
- *Listera convallarioides*, broad-leaved twayblade
- *Platanthera dilatata*, white bog-orchid
- *Platanthera hyperborea*, green-flowered bog-orchid
- X *Platanthera unalascensis*, Alaska rein-orchid
- *Spiranthes romanzoffiana*, ladies' tresses

POLYGONACEAE, Buckwheat Family

- *Polygonum paronychia*, black knotweed
- *Polygonum cuspidatum*, Japanese knotweed
- *Polygonum douglasii*, Douglas' knotweed
- *Polygonum aviculare*, common knotweed
- *Polygonum* spp.
- X *Rumex acetosella*, sheep sorrel
- *Rumex obtusifolius*, bitter or broadleaved dock
- X *Rumex occidentalis*, western dock
- *Rumex salicifolius*, *mexicanus*, or *transitorius*, willow or narrow-leaved dock
- *Polygonum sachalinense*, giant knotweed
- *Polygonum polystachyum*, Himalayan knotweed
- *Polygonum minimum*, leafy dwarf knotweed
- *Polygonum lapathifolium*, willow weed
- *Polygonum* spp.
- *Rumex crispus*, curled dock
- *Rumex conglomeratus*, clustered dock
- *Rumex maritimus*, golden dock

PORTULACACEAE, Purslane Family

- *Calandrinia ciliata*, red maids
- *Montia* spp.
- X *Montia linearis*, narrow-leaved montia
- *Montia diffusa*, branching montia
- *Montia cordifolia*, heart-leaved spring-beauty
- *Claytonia perfoliata*, miner's lettuce
- X *Montia parvifolia*, small-leaved montia
- *Montia fontana*, blinks or water chickweed
- *Montia dichotoma*, dwarf montia
- *Montia howellii*, Howell's montia
- X *Claytonia sibirica*, Siberian miner's-lettuce
- *Claytonia spathulata*, pale spring-beauty

CARYOPHYLLACEAE, Pink Family

- *Spergularia canadensis*, Canadian sand-spurry
- *Spergularia rubra*, red sand-spurry
- *Sagina procumbens*, bird's-eye pearlwort
- X *Moehringia macrophylla*, big-leaved sandwort
- *Minuartia tenella*, slender sandwort
- *Stellaria media*, chickweed
- *Stellaria longipes*, long-stalked starwort
- *Spergularia macrotheca*, beach sand-spurry
- *Sagina maxima*, coastal pearlwort
- *Sagina decumbens*, western pearlwort
- *Moehringia lateriflora*, blunt-leaved sandwort
- *Stellaria crispa*, crisp sandwort
- *Stellaria borealis*, northern starwort
- *Stellaria nitens*, shining starwort

- X *Cerastium arvense*, field chickweed
- \_ *Silene douglasii*, Douglas' campion
- \_ *Silene vulgaris*, bladder campion
- \_ *Silene latifolia*, white cockle
- \_ *Silene noctiflora*, night-flowering catchfly
- X *Lychnis coronaria*, rose campion
- \_ *Spergularia marina*, salt marsh sand-spurry
- \_ *Cerastium fischerianum*, Fisher's chickweed
- \_ *Silene menziesii*, Menzies' campion
- \_ *Silene* spp.
- \_ *Silene antirrhina*, sleepy catchfly
- \_ *Silene gallica*, small-flowered catchfly
- \_ *Honkenya peplodes*, seabeach sandwort
- \_ *Stellaria humifusa*, salt marsh starwort

BRASSICACEAE, Mustard Family

- \_ *Cardamine nuttallii*, beautiful bitter-cress
- \_ *Cardamine occidentalis*, western b-c
- \_ *Cardamine oligosperma*, few-seeded b-c
- \_ *Arabis hirsuta*, hairy rockcress
- \_ *Arabis lyrata*, lyre-leaved rockcress
- \_ *Thlaspi arvense*, field pennycress
- \_ *Lepidium densiflorum*, prairie pepper-grass
- \_ *Barbarea orthoceras*, American winter cress
- \_ *Capsella bursa-pastoris*, shepherd's purse
- \_ *Rorippa curvisiliqua*, western yellow cress
- \_ *Rorippa nasturtium-aquaticum*, water cress
- \_ *Sisymbrium altissimum*, tall tumble-mustard
- \_ *Draba* spp.
- \_ *Cochlearia groenlandica*, scurvy grass
- \_ *Idahoe scapigera*, pepperpod
- \_ *Cardamine breweri*, brewer's bitter-cress
- \_ *Cardamine pensylvanica*, Pennsylvanian b-c
- \_ *Arabis* spp.
- \_ *Arabis holboellii*, Holboell's rockcress
- \_ *Brassica campestris*, field mustard or rape
- \_ *Lepidium virginicum*, tall pepper-grass
- \_ *Barbarea vulgaris*, bitter winter cress
- \_ *Rorippa palustris*, marsh yellow cress
- \_ *Sisymbrium officinale*, hedge mustard
- \_ *Draba verna*, common draba
- \_ *Erysimum cheiranthoides*, wormseed mustard
- \_ *Cakile edentula*, American searocket

CRASSULACEAE, Stonecrop Family

- X *Sedum spathulifolium*, broad-leaved stonecrop
- \_ *Sedum divergens*, spreading stonecrop
- \_ *Sedum oreganum*, Oregon stonecrop
- \_ *Sedum lanceolatum*, lance-leaved stonecrop

SAXIFRAGACEAE, Saxifrage Family

- \_ *Saxifraga cespitosa*, tufted saxifrage
- X *Saxifraga ferruginea*, Alaska saxifrage
- \_ *Saxifraga rufidula*, rusty-haired saxifrage
- X *Lithophragma parviflorum*, small-flowered woodland star
- \_ *Mitella ovalis*, oval-leaved mitrewort
- \_ *Heuchera micrantha*, small-flowered alumroot
- \_ *Boykinia elata*, coast boykinia
- \_ *Tolmiea menziesii*, piggy-back plant
- \_ *Tiarella trifoliata* var. *unifoliata*, foamflower
- \_ *Saxifraga mertensiana*, wood saxifrage
- \_ *Saxifraga occidentalis*, western saxifrage
- X *Saxifraga integrifolia*, grassland saxifrage
- \_ *L. glabrum*, smooth woodland star
- \_ *Mitella caulescens*, leafy mitrewort
- \_ *Heuchera chlorantha*, meadow alumroot
- \_ *Tellima grandiflora*, fringecup
- \_ *Tiarella trifoliata* var. *trifoliata*, foamflower
- \_ *Tiarella trifoliata* var. *laciniata*, foamflower

RANUNCULACEAE, Buttercup Family

- \_ *Anemone lyallii*, Lyall's anemone
- \_ *Caltha palustris*, yellow marsh-marigold
- \_ *Ranunculus orthorhynchus*, straight-beaked b.
- \_ *Ranunculus acris*, meadow buttercup
- \_ *Ranunculus macounii*, Macoun's buttercup
- \_ *Ranunculus flammula*, lesser spearwort
- \_ *Ranunculus cymbalaria*, shore buttercup
- \_ *Coptis trifolia*, three-leaved goldthread
- \_ *Trautvetteria carolinensis*, false bugbane
- \_ *Aquilegia formosa*, columbine
- \_ *Anemone multifida*, cut-leaf anemone
- X *Ranunculus occidentalis*, western buttercup
- \_ *Ranunculus repens*, creeping buttercup
- \_ *Ranunculus uncinatus*, little buttercup
- \_ *Ranunculus pensylvanicus*, Pennsylvania buttercup
- \_ *Ranunculus* spp.
- \_ *Coptis asplenifolia*, fern-leaved goldthread
- \_ *Actaea rubra*, baneberry
- \_ *Thalictrum occidentale*, western meadowrue
- X *Delphinium menziesii*, Menzies' larkspur

ROSACEAE, Rose Family

- \_ *Aruncus dioicus*, goats' beard
- X *Fragaria vesca*, woodland strawberry
- \_ *Geum macrophyllum*, large-leaved avens
- \_ *Potentilla gracilis*, graceful cinquefoil
- \_ *Sanguisorba officinalis*, great burnet
- \_ *Fragaria chiloensis*, coastal strawberry
- \_ *Fragaria virginiana*, wild strawberry
- \_ *Potentilla anserina*, silverweed
- \_ *Potentilla villosa*, villous cinquefoil

FABACEAE, Pea Family

- |  |   |
|--|---|
| - <i>Lathyrus japonicus</i> , beach pea                | - <i>Lathyrus littoralis</i> , grey beach peavine       |
| - <i>Lathyrus palustris</i> , marsh peavine            | X <i>Lathyrus nevadensis</i> , purple peavine           |
| - <i>Lathyrus latifolius</i> , broad-leaved peavine    | - <i>Lathyrus</i> spp.                                  |
| - <i>Vicia americana</i> , American vetch              | - <i>Vicia hirsuta</i> , hairy vetch                    |
| - <i>Vicia cracca</i> , tufted vetch                   | - <i>Vicia villosa</i> , woolly vetch                   |
| - <i>Vicia nigricans</i> , giant vetch                 | - <i>Vicia sativa</i> , common vetch                    |
| - <i>Lupinus arcticus</i> , arctic lupine              | - <i>Lupinus</i> spp.                                   |
| - <i>Lupinus arboreus</i> , tree lupine                | - <i>Lupinus littoralis</i> , seashore lupine           |
| - <i>Lupinus lepidus</i> , prairie lupine              | - <i>Lupinus polyphyllus</i> , large-leaved lupine      |
| X <i>Lupinus polycarpus</i> , small-flowered lupine    | - <i>Lupinus bicolor</i> , two-coloured lupine          |
| - <i>Trifolium repens</i> , white clover               | - <i>Trifolium pratense</i> , red clover                |
| - <i>Trifolium hybridum</i> , alsike clover            | - <i>Trifolium dubium</i> , small hop-clover            |
| - <i>Trifolium campestre</i> , low hop-clover          | X <i>Trifolium wormskjoldii</i> , springbank clover     |
| - <i>Trifolium microdon</i> , thimble clover           | - <i>Trifolium microcephalum</i> , small-headed clover  |
| - <i>Trifolium</i> spp.                                | - <i>Lotus crassifolius</i> , big deervetch             |
| - <i>Lotus corniculatus</i> , birds-foot trefoil       | X <i>Lotus micranthus</i> , small-flowered lotus        |
| - <i>Lotus unifoliolatus</i> , Spanish-clover          | - <i>Lotus denticulatus</i> , meadow birds-foot trefoil |
| X <i>Lotus pinnatus</i> , bog birds-foot trefoil       | - <i>Onobrychis viciifolia</i> , saintfoin              |
| - <i>Medicago lupulina</i> , black medic               | - <i>Medicago sativa</i> , alfalfa or lucerne           |
| - <i>Melilotus alba</i> , white sweet-clover           | - <i>Melilotus officinalis</i> , yellow sweet-clover    |
| - <i>Rupertia (Psoralea) physodes</i> , California-tea |   |

VIOLACEAE, Violet Family

- |  |  |
|--|--|
| - <i>Viola adunca</i> , early blue violet            | - <i>Viola howellii</i> , Howell's violet              |
| - <i>Viola langsдорffii</i> , Alaska violet          | - <i>Viola palustris</i> , marsh violet                |
| - <i>Viola canadensis</i> , Canada violet            | - <i>Viola glabella</i> , stream violet                |
| - <i>Viola sempervirens</i> , trailing yellow violet | - <i>Viola orbiculata</i> , round-leaved yellow violet |
| - <i>Viola praemorsa</i> , yellow montane violet     | - <i>Viola</i> spp.                                    |

ONAGRACEAE, Evening-Primrose Family

- |  |  |
|--|--|
| - <i>Epilobium angustifolium</i> , fireweed              | - <i>Epilobium minutum</i> , small-flowered willowherb |
| - <i>Epilobium brachycarpum</i> , tall annual willowherb | - <i>Epilobium ciliatum</i> , purple-leaved willowherb |
| - <i>Epilobium hornemannii</i> , Hornemann's w.          | - <i>Clarkia amoena</i> , farewell-to-spring           |
| - <i>Epilobium densiflora</i> , dense spike-primrose     | - <i>Boisduvalia stricta</i> , brook spike-primrose    |
| - <i>Circaea alpina</i> , enchanter's-nightshade         | - <i>Epilobium</i> spp.                                |

APIACEAE, Carrot Family

- |  |  |
|--|--|
| - <i>Lilaeopsis occidentalis</i> , western lilaeopsis  | - <i>Heracleum maximum</i> , cow-parsnip                 |
| - <i>Heracleum mantegazzianum</i> , giant cow-parsnip  | X <i>Sanicula crassicaulis</i> , Pacific sanicle         |
| - <i>Sanicula arctopoides</i> , footsteps of spring    | - <i>Sanicula graveolens</i> , sierra sanicle            |
| - <i>Sanicula bipinnatifida</i> , purple sanicle       | - <i>Cicuta douglasii</i> , Douglas' water-hemlock       |
| - <i>Sium suave</i> , water-parsnip                    | - <i>Glehnia littoralis</i> , beach-carrot               |
| X <i>Oenanthe sarmentosa</i> , Pacific water-parsley   | X <i>Osmorhiza berteroi</i> , mountain sweet-cicely      |
| - <i>Osmorhiza purpurea</i> , purple sweet-cicely      | - <i>Angelica geniflexa</i> , kneeling angelica          |
| - <i>Angelica arguta</i> , sharptooth angelica         | - <i>Angelica lucida</i> , sea-watch                     |
| - <i>Ligusticum calderi</i> , Calder's lovage          | X <i>Conioselinum gmelinii</i> , Pacific hemlock-parsley |
| - <i>Conium maculatum</i> , poison-hemlock             | - <i>Daucus carota</i> , wild carrot                     |
| - <i>Daucus pusillus</i> , American wild carrot        | - <i>Perideridia gairdneri</i> , Gairdner's yampah       |
| - <i>Lomatium nudicaule</i> , Indian consumption plant | - <i>Lomatium martindalei</i> , Martindale's lomatium    |
| X <i>Lomatium utriculatum</i> , spring-gold            | - <i>Lomatium dissectum</i> , fern-leaved desert-parsley |
| - <i>Anthriscus</i> spp., chervil                      |  |

PYROLACEAE, Wintergreen Family

- |  |   |
|--|---|
| - <i>Moneses uniflora</i> , single delight       | - <i>Pyrola asarifolia</i> , pink wintergreen       |
| - <i>Pyrola chlorantha</i> , green wintergreen   | - <i>Pyrola minor</i> , lesser wintergreen          |
| - <i>Pyrola picta</i> , white-veined wintergreen | - <i>Pyrola dentata</i> , Nootka wintergreen        |
| - <i>Pyrola</i> spp.                             | - <i>Orthilia secunda</i> , one-sided wintergreen   |
| - <i>Chimaphila umbellata</i> , prince's-pine    | - <i>Chimaphila menziesii</i> , Menzies' pipsissewa |

- X *Monotropa uniflora*, indian-pipe
- \_ *Monotropa hypopithys*, pinesap
- \_ *Allotropa virgata*, candystick

- \_ *Cephalanthera austinae*, phantom orchid
- \_ *Pterospora andromedea*, pinedrops
- \_ *Hemitomes congestum*, gnome-plant

GENTIANACEAE, Gentian Family

- \_ *Gentiana sceptrum*, king gentian
- \_ *Gentiana amarella*, northern gentian

- \_ *Gentiana douglasiana*, swamp gentian
- \_ *Centaurium erythraea*, centaury

HYDROPHYLLACEAE, Waterleaf Family

- \_ *Romanzoffia tracyi*, Tracy's mistmaiden
- \_ *Nemophila* spp.

- X *Nemophila parviflora*, small-flowered nemophila

POLEMONIACEAE, Phlox Family

- \_ *Linanthus bicolor*, bicoloured flaxflower
- \_ *Collomia heterophylla*, vari-leaved collomia
- \_ *Collomia grandiflora*, large-flowered collomia
- \_ *Navarretia intertexta*, needle-leaved navarretia

- X *Microsteris gracilis*, pink microsteris
- \_ *Collomia linearis*, narrow-leaved collomia
- \_ *Navarretia squarrosa*, skunkweed

BORAGINACEAE, Borage Family

- \_ *Cryptantha intermedia*, large-flowered c.
- \_ *Cryptantha torreyana*, Torrey's cryptantha
- \_ *Plagiobothrys figuratus*, fragrant popcornflower
- \_ *Amsinckia spectabilis*, seaside fiddleneck
- \_ *Myosotis laxa*, small-flowered forget-me-not
- \_ *Myosotis sylvatica*, wood forget-me-not

- \_ *Cryptantha affinis*, common cryptantha
- \_ *Plagiobothrys scouleri*, Scouler's popcornflower
- \_ *Plagiobothrys tenellus*, slender popcornflower
- \_ *Amsinckia lycopsoides*, bugloss fiddleneck
- \_ *Myosotis scorpioides*, marsh forget-me-not
- \_ *Myosotis discolor*, common forget-me-not

LAMIACEAE, Mint Family

- \_ *Lycopus uniflorus*, water horehound
- \_ *Scutellaria lateriflora*, blue skullcap
- \_ *Lamium amplexicaule*, common dead-nettle
- \_ *Clinopodium douglasii*, yerba buena
- X *Prunella vulgaris*, self-heal
- \_ *Stachys mexicana*, Mexican hedge-nettle
- \_ *Stachys chamissonis*, Cooley's hedge-nettle

- \_ *Scutellaria galericulata*, marsh skullcap
- \_ *Mentha arvensis*, field mint
- \_ *Lamium purpureum*, purple dead-nettle
- \_ *Glechoma hederacea*, ground-ivy
- \_ *Galeopsis tetrahit*, hemp-nettle
- \_ *Stachys palustris*, swamp hedge-nettle

SCROPHULARIACEAE, Figwort Family

- \_ *Linaria vulgaris*, butter-and-eggs
- \_ *Linaria canadensis*, blue toadflax
- \_ *Verbascum thapsus*, great mullein
- \_ *Castilleja levisecta*, golden paintbrush
- \_ *Castilleja hispida*, harsh paintbrush
- \_ *Orthocarpus bracteosus*, rosy owl-clover
- \_ *Orthocarpus castillejoideus*, paintbrush owl-clover
- \_ *Rhinanthus minor*, yellow rattle
- X *Euphrasia nemorosa*, eastern eyebright
- \_ *Scrophularia lanceolata*, lance-leaved figwort
- \_ *Gratiola ebracteata*, bractless hedge-hyssop
- \_ *Veronica peregrina*, purslane speedwell
- \_ *Veronica arvensis*, wall speedwell
- X *Collinsia parviflora*, small-flowered blue-eyed Mary
- \_ *Mimulus alsinoides*, chickweed monkey-flower
- \_ *Mimulus moschatus*, musk-flower
- \_ *Nothochelone nemorosa*, woodland penstemon
- \_ *Penstemon ovatus*, broad-leaved penstemon

- \_ *Linaria genistifolia*, dalmatian toadflax
- \_ *Linaria purpurea*, purple toadflax
- X *Digitalis purpurea*, foxglove
- \_ *Castilleja miniata*, red paintbrush
- \_ *Orthocarpus pusillus*, dwarf owl-clover
- \_ *Orthocarpus attenuatus*, narrow-leaved owl-clover
- \_ *Melampyrum lineare*, cow-wheat
- \_ *Parentucellia viscosa*, yellow parentucellia
- \_ *Scrophularia californica*, California figwort
- \_ *Veronica beccabunga*, American brooklime
- \_ *Veronica serpyllifolia*, thyme-leaved speedwell
- \_ *Veronica scutellata*, marsh speedwell
- \_ *Veronica filiformis*, slender speedwell
- \_ *C. grandiflora*, large-flowered b-e M
- X *Mimulus guttatus*, yellow monkey-flower
- \_ *Mimulus dentatus*, tooth-leaved monkey-flower
- \_ *Penstemon serrulatus*, coast penstemon

ASTERACEAE, Sunflower Family

- \_ *Taraxacum officinale*, common dandelion
- \_ *Microseris bigelovii*, coast microseris

- \_ *Taraxacum laevigatum*, red-seeded dandelion
- \_ *Agoseris grandiflora*, large-flowered agoseris



- |  |   |
|--|---|
| <input type="checkbox"/> <i>Crepis capillaris</i> , smooth hawksbeard                  | <input type="checkbox"/> <i>Crepis tectorum</i> , annual hawksbeard                       |
| <input type="checkbox"/> <i>Crepis nana</i> , dwarf hawksbeard                         | <input checked="" type="checkbox"/> <i>Hieracium albiflorum</i> , white-flowered hawkweed |
| <input type="checkbox"/> <i>Hieracium umbellatum</i> , narrow-leaved hawkweed          | <input type="checkbox"/> <i>Hieracium aurantiacum</i> , orange hawkweed                   |
| <input checked="" type="checkbox"/> <i>Hypochaeris radicata</i> , hairy cat's-ear      | <input type="checkbox"/> <i>Hypochaeris glabra</i> , smooth cat's-ear                     |
| <input type="checkbox"/> <i>Leontodon autumnalis</i> , autumn hawkbit                  | <input type="checkbox"/> <i>Leontodon taraxacoides</i> , hairy hawkbit                    |
| <input type="checkbox"/> <i>Tragopogon dubius</i> , yellow salsify                     | <input type="checkbox"/> <i>Tragopogon porrifolius</i> , common salsify                   |
| <input type="checkbox"/> <i>Sonchus asper</i> , prickly sow-thistle                    | <input type="checkbox"/> <i>Sonchus oleraceus</i> , common sow-thistle                    |
| <input type="checkbox"/> <i>Sonchus arvensis</i> , perennial sow-thistle               | <input type="checkbox"/> <i>Lapsana communis</i> , nipplewort                             |
| <input checked="" type="checkbox"/> <i>Lactuca muralis</i> , wall lettuce              | <input type="checkbox"/> <i>Lactuca tatarica</i> , blue lettuce                           |
| <input type="checkbox"/> <i>Lactuca serriola</i> , prickly lettuce                     | <input type="checkbox"/> <i>Prenanthes alata</i> , rattlesnake-root                       |
| <input type="checkbox"/> <i>Cichorium intybus</i> , chicory                            | <input type="checkbox"/> <i>Ambrosia chamissonis</i> , silver burweed                     |
| <input type="checkbox"/> <i>Artemisia suksdorfii</i> , Suksdorf's mugwort              | <input type="checkbox"/> <i>Artemisia campestris</i> , northern wormwood                  |
| <input checked="" type="checkbox"/> <i>Achillea millefolium</i> , yarrow               | <input type="checkbox"/> <i>Matricaria discoidea</i> , pineapple weed                     |
| <input type="checkbox"/> <i>Matricaria perforata</i> , scentless mayweed               | <input type="checkbox"/> <i>Matricaria recutita</i> , wild chamomile                      |
| <input type="checkbox"/> <i>Tanacetum bipinnatum</i> , dune tansy                      | <input type="checkbox"/> <i>Tanacetum vulgare</i> , common tansy                          |
| <input type="checkbox"/> <i>Cotula coronopifolia</i> , brass buttons                   | <input type="checkbox"/> <i>Jaumea carnosa</i> , fleshy jaumea                            |
| <input type="checkbox"/> <i>Anthemis cotula</i> , mayweed                              | <input type="checkbox"/> <i>Anthemis arvensis</i> , corn chamomile                        |
| <input type="checkbox"/> <i>Anthemis tinctoria</i> , yellow chamomile                  | <input checked="" type="checkbox"/> <i>Leucanthemum vulgare</i> , oxeye daisy             |
| <input type="checkbox"/> <i>Bellis perennis</i> , English daisy                        | <input type="checkbox"/> <i>Coryza canadensis</i> , horseweed                             |
| <input type="checkbox"/> <i>Erigeron annuus</i> , annual fleabane or daisy             | <input type="checkbox"/> <i>Erigeron strigosus</i> , rough-stemmed fleabane               |
| <input type="checkbox"/> <i>Erigeron philadelphicus</i> , Philadelphia fleabane        | <input type="checkbox"/> <i>Aster chilensis</i> , California aster                        |
| <input checked="" type="checkbox"/> <i>Aster curtus</i> , white-top aster              | <input type="checkbox"/> <i>Aster</i> spp.  |
| <input type="checkbox"/> <i>Aster subspicatus</i> , Douglas' aster                     | <input type="checkbox"/> <i>Aster eatonii</i> , Eaton's aster                             |
| <input type="checkbox"/> <i>Solidago canadensis</i> , Canada goldenrod                 | <input type="checkbox"/> <i>Bidens cernua</i> , nodding beggarticks                       |
| <input type="checkbox"/> <i>Bidens amplissima</i> , Vancouver Island beggarticks       | <input type="checkbox"/> <i>Grindelia integrifolia</i> , gumweed                          |
| <input type="checkbox"/> <i>Balsamorhiza deltoidea</i> , deltoid balsamroot            | <input type="checkbox"/> <i>Madia glomerata</i> , clustered tarweed                       |
| <input type="checkbox"/> <i>Madia sativa</i> , Chilean tarweed                         | <input type="checkbox"/> <i>Madia minima</i> , small-headed tarweed                       |
| <input type="checkbox"/> <i>Madia exigua</i> , little tarweed                          | <input type="checkbox"/> <i>Luina hypoleuca</i> , silverback luina                        |
| <input type="checkbox"/> <i>Madia elegans</i> , elegant tarweed                        | <input type="checkbox"/> <i>Lasthenia maritima</i> , hairy goldfields                     |
| <input checked="" type="checkbox"/> <i>Eriophyllum lanatum</i> , woolly eriophyllum    | <input type="checkbox"/> <i>Adenocaulon bicolor</i> , pathfinder                          |
| <input type="checkbox"/> <i>Crocidium multicaule</i> , gold star                       | <input type="checkbox"/> <i>Petasites japonicus</i> , Japanese butterbur                  |
| <input type="checkbox"/> <i>Petasites palmatus</i> , palmate coltsfoot                 | <input type="checkbox"/> <i>Arnica cordifolia</i> , heart-leaved arnica                   |
| <input type="checkbox"/> <i>Arnica amplexicaulis</i> , streambank arnica               | <input type="checkbox"/> <i>Senecio vulgaris</i> , common groundsel                       |
| <input type="checkbox"/> <i>Senecio sylvaticus</i> , wood groundsel                    | <input type="checkbox"/> <i>Senecio viscosus</i> , sticky ragwort                         |
| <input checked="" type="checkbox"/> <i>Senecio jacobaea</i> , tansy ragwort            | <input type="checkbox"/> <i>Senecio pauperculus</i> , Canadian butterweed                 |
| <input type="checkbox"/> <i>Senecio macounii</i> , Macoun's groundsel                  | <input type="checkbox"/> <i>Antennaria racemosa</i> , racemose pussytoes                  |
| <input type="checkbox"/> <i>Senecio</i> spp.   | <input type="checkbox"/> <i>Antennaria parvifolia</i> , Nuttall's pussytoes               |
| <input type="checkbox"/> <i>Antennaria rosea</i> , rosy pussytoes                      | <input type="checkbox"/> <i>Gnaphalium microcephalum</i> , slender cudweed                |
| <input checked="" type="checkbox"/> <i>Anaphalis margaritacea</i> , pearly everlasting | <input type="checkbox"/> <i>Gnaphalium purpureum</i> , purple cudweed                     |
| <input type="checkbox"/> <i>Gnaphalium stramineum</i> , cotton-batting cudweed         | <input type="checkbox"/> <i>Gnaphalium uliginosum</i> , marsh cudweed                     |
| <input type="checkbox"/> <i>Gnaphalium palustre</i> , lowland cudweed                  | <input type="checkbox"/> <i>Arctium lappa</i> , great burdock                             |
| <input checked="" type="checkbox"/> <i>Arctium minus</i> , common burdock              | <input type="checkbox"/> <i>Cirsium vulgare</i> , bull thistle                            |
| <input type="checkbox"/> <i>Cirsium arvense</i> , Canada thistle                       | <input type="checkbox"/> <i>Cirsium brevistylum</i> , short-styled thistle                |
| <input type="checkbox"/> <i>Cirsium edule</i> , edible thistle                         |   |
|  |   |

---

OTHER SMALLER WILDFLOWER FAMILIES

CACTACEAE, Cactus Family

- Opuntia fragilis*, brittle prickly-pear cactus

LORANTHACEAE, Mistletoe Family

- Arceuthobium campylopodum*, dwarf mistletoe

SANTALACEAE, Sandalwood Family

- Comandra umbellata*, California comandra

- Geocaulon lividum*, bastard toad-flax

URTICACEAE, Nettle Family

- Urtica dioica*, stinging nettle

- Urtica urens*, dog nettle

- CHENOPODIACEAE, Goosefoot Family
- \_ *Atriplex patula*, orache
  - \_ *Salicornia virginica*, glasswort
  - \_ *Suaeda calceoliformis*, seablite
  - \_ *Chenopodium album*, lamb's-quarters
  - \_ *Chenopodium rubrum*, red goosefoot
- NYCTAGINACEAE, Four-o'clock Family
- \_ *Abronia latifolia*, yellow sand-verbena
- BERBERIDACEAE, Barberry Family
- X *Achlys triphylla*, vanilla-leaf
- FUMARIACEAE, Fumitory Family
- \_ *Corydalis sempervirens*, pink corydalis
  - \_ *Dicentra formosa*, bleeding heart
- BALSAMINACEAE, Balsam or Touch-me-not Family
- \_ *Impatiens noli-tangere*, common touch-me-not
- PAPAVERACEAE, Poppy Family
- \_ *Eschscholzia californica*, California poppy
  - \_ *Meconella oregana*, white meconella
- GERANIACEAE, Geranium Family
- \_ *Erodium cicutarium*, stork's-bill
  - \_ *Geranium robertianum*, herb-robert
  - \_ *Geranium molle*, dovefoot geranium
  - \_ *Geranium bicknellii*, Bicknell's geranium
  - \_ *Geranium dissectum*, cut-leaved geranium
- ARISTOLOCHACEAE, Birthwort Family
- \_ *Asarum caudatum*, wild ginger
- MALVACEAE, Mallow Family
- \_ *Sidalcea hendersonii*, Henderson's checker-mallow
- LYTHRACEAE, Loosestrife Family
- \_ *Lythrum salicaria*, purple loosestrife
- CLUSIACEAE, St. John's-wort Family
- X *Hypericum scouleri*, western St. John's-wort
  - \_ *Hypericum perforatum*, common St. John's-wort
  - \_ *Hypericum anagalloides*, bog St. John's-wort
  - \_ *Anagallis arvensis*, scarlet pimpernel
- CORNACEAE, Dogwood Family
- \_ *Cornus canadensis*, bunchberry
- APOCYNACEAE, Dogbane Family
- X *Apocynum androsaemifolium*, spreading dogbane
  - \_ *Apocynum cannabinum*, hemp dogbane
- PRIMULACEAE, Primrose Family
- \_ *Lysimachia thyrsoiflora*, tufted loosestrife
  - \_ *Lysimachia nummularia*, creeping jenny
  - \_ *Glaux maritima*, sea milk-wort
  - \_ *Trientalis arctica*, northern starflower
  - X *Trientalis latifolia*, broad-leaved starflower
  - \_ *Dodecatheon pulchellum*, few-flowered shootingstar
  - X *Dodecatheon hendersonii*, broad-leaved s.
  - \_ *Dodecatheon jeffreyi*, tall mountain shootingstar
- SOLANACEAE, Potato or Nightshade Family
- \_ *Solanum dulcamara*, European bitter-sweet
  - \_ *Solanum americanum*, black nightshade
- MENYANTHACEAE, Buckbean Family
- \_ *Fauria crista-galli*, deer-cabbage
  - \_ *Menyanthes trifoliata*, buckbean
- CONVOLVULACEAE, Morning-glory Family
- \_ *Convolvulus soldanella*, beach morning-glory
  - \_ *Convolvulus arvensis*, field bindweed
  - \_ *Convolvulus sepium*, hedge bindweed
  - \_ *Cuscuta* spp., dodders
- CUCURBITACEAE, Cucumber or Gourd Family
- \_ *Marah oreganus*, manroot or bigroot
- PLUMBAGINACEAE, Plumbago Family
- \_ *Armeria maritima*, thrift
- PLANTAGINACEAE, Plantain Family
- \_ *Plantago maritima*, sea plantain
  - \_ *Plantago lanceolata*, ribwort
  - \_ *Plantago major*, common plantain
- RUBIACEAE, Madder Family
- X *Galium aparine*, cleavers
  - \_ *Sherardia arvensis*, field madder
  - \_ *Galium triflorum*, sweet-scented bedstraw
  - \_ *Galium boreale*, northern bedstraw
  - \_ *Galium trifidum*, small bedstraw
- CAMPANULACEAE, Harebell Family
- \_ *Campanula rotundifolia*, common harebell
  - \_ *Campanula scouleri*, Scouler's harebell

VALERIANACEAE, Valerian Family

- X *Plectritis congesta*, sea blush  
 X *Plectritis macrocera*, long-spurred plectritis  
 \_ *Valeriana scouleri*, Scouler's valerian

ARACEAE, Arum or Calla-lily Family

- \_ *Lysichiton americanum*, skunk cabbage

JUNCAGINACEAE, Arrow-grass Family

- \_ *Triglochin maritimum*, sea arrow-grass  
 \_ *Triglochin palustre*, marsh arrow-grass  
 \_ *Triglochin concinnum*, slender arrow-grass

DROSERACEAE, Sundew Family

- \_ *Drosera rotundifolia*, round-leaved sundew  
 \_ *Drosera anglica*, great sundew

LENTIBULARIACEAE Family

- \_ *Pinguicula vulgaris*, butterwort

OROBANCHACEAE, Broomrape Family

- \_ *Boschniakia hookeri*, groundcone  
 \_ *Orobanche uniflora*, naked broomrape  
 \_ *Orobanche fasciculata*, clustered broomrape

TYPHACEAE, Cattail Family

- \_ *Typha latifolia*, cattail

DIPSACACEAE, Teasel Family

- \_ *Dipsacus sylvestris*, teasel

POACEAE, Grass Family

- |   |  |
|---|--|
| _ <i>Elymus glaucus</i> , blue wildrye                | _ <i>Elymus mollis</i> , dunegrass                       |
| _ <i>Anthoxanthum odoratum</i> , sweet vernalgrass    | _ <i>Dactylis glomerata</i> , orchard grass              |
| _ <i>Phragmites australis</i> , common reed           | _ <i>Cynosurus echinatus</i> , hedgehog dogtail          |
| _ <i>Melica subulata</i> , Alaska oniongrass          | _ <i>Pleuropogon refractus</i> , nodding semaphore grass |
| _ <i>Bromus carinatus</i> , California brome          | _ <i>Bromus vulgaris</i> , Columbia brome                |
| _ <i>Bromus hordeaceus</i> , soft brome               | _ <i>Vulpia bromoides</i> , barren fescue                |
| _ <i>Festuca occidentalis</i> , western fescue        | _ <i>Festuca idahoensis</i> , Idaho fescue               |
| _ <i>Festuca subulata</i> , bearded fescue            | _ <i>Trisetum cernuum</i> , nodding trisetum             |
| _ <i>Danthonia californica</i> , California oat-grass | _ <i>Aira praecox</i> , early hairgrass                  |
| -   | -  |
| -   | -  |
| -   | -  |

CYPERACEAE, Sedge Family

- |   |   |
|---|---|
| _ <i>Carex macrocephala</i> , large-headed sedge          | _ <i>Carex aurea</i> , golden sedge                         |
| _ <i>Carex lyngbyei</i> , Lyngby's sedge                  | X <i>Carex obnupta</i> , slough sedge                       |
| _ <i>Scirpus lacustris</i> , tule                         | _ <i>Eriophorum angustifolium</i> , narrow-leaved cotton-g. |
| _ <i>Eriophorum chamissonis</i> , Chamisso's cotton-grass | X <i>Carex inops</i> , long-stoloned sedge                  |
| -   | -   |
| -   | -   |

JUNCACEAE, Rush Family

- |  |   |
|--|---|
| _ <i>Juncus effusus</i> , common rush                | _ <i>Luzula parviflora</i> , small-flowered wood-rush |
| X <i>Luzula multiflora</i> , many-flowered wood-rush | -   |
| -  | -   |

FERN Family

- |  |  |
|--|--|
| X <i>Pteridium aquilinum</i> , bracken fern          | _ <i>Blechnum spicant</i> , deer fern                |
| X <i>Polystichum munitum</i> , sword fern            | _ <i>Athyrium filix-femina</i> , lady fern           |
| _ <i>Dryopteris expansa</i> , spiny wood fern        | _ <i>Gymnocarpium dryopteris</i> , oak fern          |
| _ <i>Thelypteris phegopteris</i> , narrow beech fern | _ <i>Pityrogramma triangularis</i> , goldenback fern |
| _ <i>Polypodium glycyrrhiza</i> , licorice fern      | _ <i>Asplenium viride</i> , green spleenwort         |
| _ <i>Adiantum pedatum</i> , maidenhair fern          | X <i>Cryptogramma crispa</i> , parsley fern          |
| _ <i>Cystopteris fragilis</i> , fragile fern         | _ <i>Botrychium multifidum</i> , leathery grape fern |
| -  | -  |
| -  | -  |

FERN Allies

*Equisetum* spp.  
 *Lycopodium clavatum*, running clubmoss  
 *Selaginella wallacei*, Wallace's selaginella

*Lycopodium annotinum*, stiff clubmoss  
 *Lycopodium selago*, fir clubmoss  
 *Isoetes nuttallii*, Nuttall's quillwort

---

LIVERWORTS

*Herbertus aduncus*  
 *Porella navicularis*  
 *Marchantia polymorpha*

*Scapania bolanderi*  
 *Pellia neesiana*  
 *Conocephalum conicum*

MOSESSES

*Sphagnum girgensohnii*  
 *Bryum miniatum*  
 *Rhizomnium glabrescens*  
 *Leucolepis acanthoneuron*  
 *Neckera douglasii*  
 *Antitrichia curtispindula*  
 *Hypnum circinale*  
 *Kindbergia praelonga*  
 *Rhytidiadelphus triquetrus*  
 *Hylocomium splendens*  
 *Orthotrichum lyellii*  
 *Ceratodon purpureus*  
 *Racomitrium canescens*

*Polytrichum* spp.  
 *Plagiomnium insigne*  
 *Rhizomnium magnifolium*  
 *Metaneckera menziesii*  
 *Dendroaalsia abietina*  
 *Isoethecium myosuroides*  
 *Kindbergia oregana*  
 *Pleurozium schreberi*  
 *Rhytidiadelphus loreus*  
 *Plagiothecium undulatum*  
 *Amphidium lapponicum*  
 *Dicranum* spp.  
 *Fontinalis antipyretica*

---

LICHENS

*Lepraris* spp.  
 *Umbilicaria* spp.  
 *Peltigera britannica*  
 *Nephroma laevigatum*  
 *Ramalina menziesii*  
 *Cladonia macilenta*  
 *Cladonia* spp.  
 *Usnea longissima*  
 *Bryoria* spp.

*Verrucaria maura*  
 *Lobaria pulmonaria*  
 *Peltigera neopolydactyla*  
 *Xanthoria* spp.  
 *Pilophorus acicularis & clavatus*  
 *Cladonia squamosa*  
 *Cladonia portentosa*  
 *Alectoria sarmentosa*

---

Plants are in order as presented in "Plants of Coastal B. C." by Pojar & MacKinnon.  
Additional species have been included.

ENTERED  
Jan 8/02