

Block Center  
 UTM: 458474E, 5481182N  
 Lat & Long: 49° 28' 54", 123° 34' 23"

### A84612 HARVEST AREA SUMMARY

#### Block DK045

Harvest Method	Hoe
Area (ha)	17.6
Volume/ha	573
<b>Volume (m<sup>3</sup>)</b>	<b>10088</b>



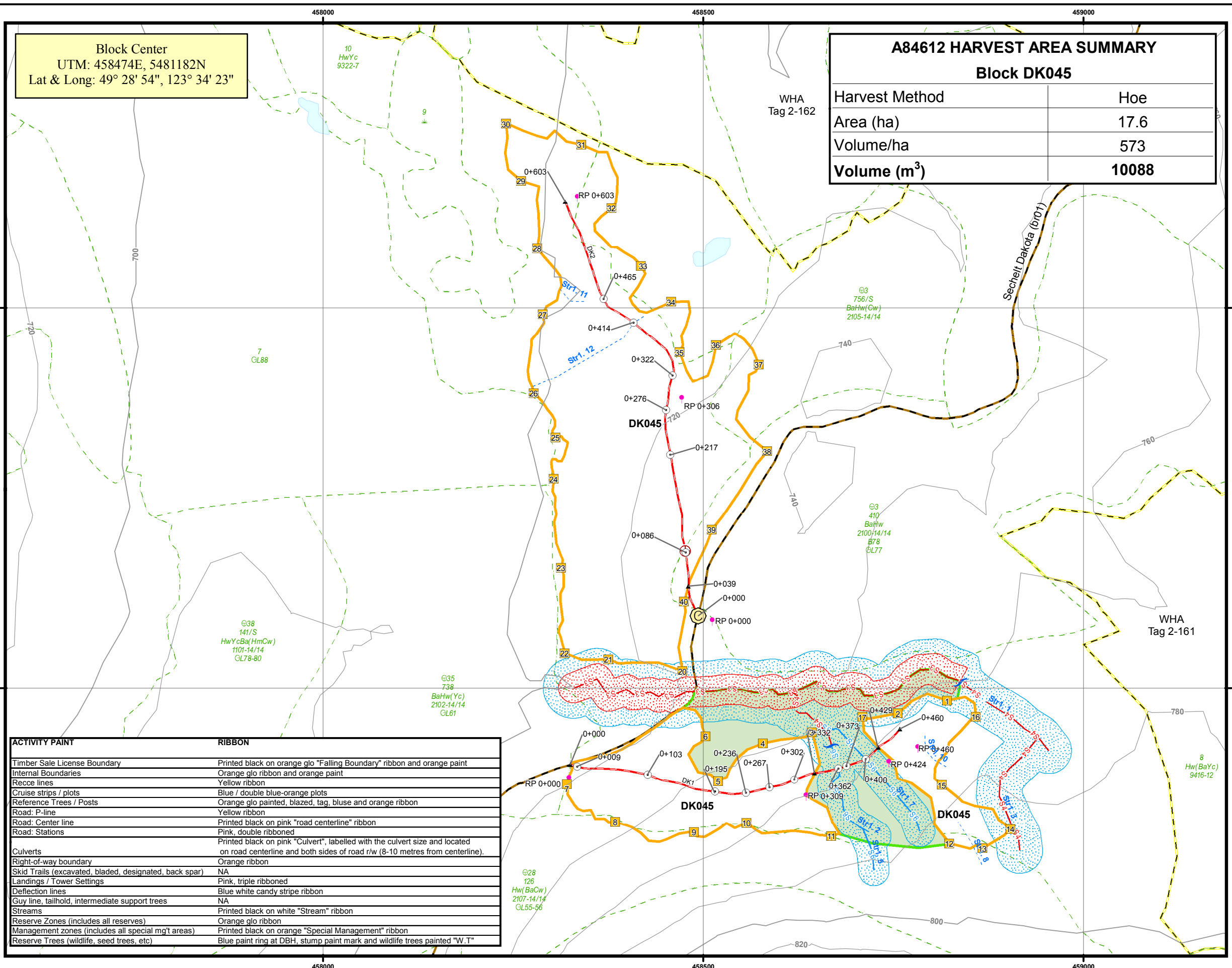
# BCTS

BC Timber Sales  
 Strait of Georgia

## TSL :A84612-Bk DK045 Harvest Plan Map

Mapsheet: 092G.043      Gross Area: 21.4ha  
 Operating Area: Powell River      Harvest Area: 17.6ha  
 TSA / TSB: 39 / B      NAR: 16.7ha  
 Forest Region: Coast Region      TLA: 0.0ha  
 Forest District: Sunshine Coast      WTRA: 2.8ha  
 General Location: Dakota Ridge      PAS: 0.9ha  
 Latitude: 49° 28' 54"      R/W: 0.0ha  
 Longitude: 123° 34' 23"

Emergency UTM Coordinates : 458474E, 5481182N



ACTIVITY PAINT	RIBBON
Timber Sale License Boundary	Printed black on orange glo "Falling Boundary" ribbon and orange paint
Internal Boundaries	Orange glo ribbon and orange paint
Rece lines	Yellow ribbon
Cruise strips / plots	Blue / double blue-orange plots
Reference Trees / Posts	Orange glo painted, blazed, tag, bluse and orange ribbon
Road: P-line	Yellow ribbon
Road: Center line	Printed black on pink "road centerline" ribbon
Road: Stations	Pink, double ribboned
Culverts	Printed black on pink "Culvert", labelled with the culvert size and located on road centerline and both sides of road r/w (8-10 metres from centerline).
Right-of-way boundary	Orange ribbon
Skid Trails (excavated, bladed, designated, back spar)	NA
Landings / Tower Settings	Pink, triple ribboned
Deflection lines	Blue white candy stripe ribbon
Guy line, tailhold, intermediate support trees	NA
Streams	Printed black on white "Stream" ribbon
Reserve Zones (includes all reserves)	Orange glo ribbon
Management zones (includes all special mg't areas)	Printed black on orange "Special Management" ribbon
Reserve Trees (wildlife, seed trees, etc)	Blue paint ring at DBH, stump paint mark and wildlife trees painted "W.T"

#### Block Information

- Block
- Wildlife Tree Retention Area
- Timber Leave Area
- Existing Blocks
- Falling Corner
- Deflection Line
- Yarding Direction
- BackSpar
- Machine Crossing
- Resource Feature
- Block Center
- Heli Pad

#### Harvest Strategy

- Riparian Management Zone
- Riparian Reserve Zone

#### Riparian Information

- Reach Break
- NCD
- Fish Sensitive Zone
- S1; S2; S3; S4
- S5; S6;

#### Base Data

- Forest Cover
- Contour
- Lake
- Greened Up Blocks
- Wetland
- WHA approved

#### Physiographic Data

- Break
- Rock
- Draw
- Gully
- Ridge
- Windthrow
- Slide

#### Harvest Method

- Helicopter
- Hoe Forward

#### Access Management

- Forest Service Road
- Proposed Permanent
- CMP
- WBC
- Ford
- Bridge
- Road Station

1:5000

Meters

Declination: 17° 47' E

Date Printed: January 25, 2010      Map Coordinates: UTM Nad 83 Zone 10  
 Completed by: DJD      Projection: BC Environment Albers

		<b>Harvest Plan Map (page 2)</b> <b>TSL A84612 BLK DK045</b>			<b>Original: X</b> <b>Amendment #: n/a</b>	
<b>HARVESTING STRATEGIES AND CONSTRAINTS</b>						
<b>ISSUE / CONCERN</b>		<b>ACTIONS TO ACCOMMODATE (FALLING, YARDING, LOADING, HAULING)</b>				
<b>Safety</b>		Along the boundary fall any snags that are safety hazards while retaining those that are stable. BCTS Strait of Georgia Wet Weather Shutdown Criteria will be adhered to.				
<b>Access</b>		Road access from Gibsons and Sechelt via the Sechelt-Wilson FSR.				
<b>Falling</b>		Direction falling should be practiced to the extent possible around riparian features. Further details provided below.				
<b>Yarding</b>		<p>The block is designed for Hoe Forwarding.</p> <p>Soil displacement is high throughout the block. Take the following precautions when using ground base machinery:</p> <ol style="list-style-type: none"> <li>1 - Minimize the number of passes on trails</li> <li>2 - Time operations during drier soil conditions, avoid wet areas and stop operations if rutting is greater than 15cm</li> <li>3 - Use adequate ground puncheon when hoe forwarding</li> <li>4 - Pull and disperse puncheon with competition of hoe forwarding</li> <li>5 - Orient trails along contours</li> </ol>				
<b>Pruning</b>		Pruning will not be required.				
<b>Cultural Heritage</b>		No evidence of cultural heritage use was noted during the layout of the block. In the event that any potential cultural or archaeological resource features are identified during operations activities in the immediate vicinity will be suspended until the applicable professionals complete an assessment.				
<b>Riparian (see strategies below)</b>		<p>Management strategies for riparian management zones include protecting stream banks, maintaining shade and debris management.</p> <p>Do not remove stable natural material that is in a stream or that is embedded in a stream bank, or root system that contributes to stream bank stability during harvest or stream cleaning (except when constructing or modifying an authorized stream crossing). All temporary stream crossings will be removed concurrent with harvest operations.</p> <p>Riparian Management Zone widths are provided as slope distances.</p>				
<b>RIPARIAN MANAGEMENT</b>						
<b>Stream, Wetland, or Lake Identification (as per map)</b>	<b>Riparian Class</b>	<b>Reserve Zone Width (m)</b>	<b>Management Zone Width (m)</b>	<b>Minimum BA Retention (%)</b>	<b>Strategies for protecting the stream bank and minimizing damage to the understory.</b>	
1-R1	S3	20	20		Outside of Harvest Area Low Transport potential. FA YA.	
1-R2	S4	0	30		Outside of Harvest Area Low Transport potential. FA YA.	
2-R1	S4	0	30		Outside of Harvest Area Low Transport potential. FA YA.	
2-R2	S6	0	20		Outside of Harvest Area Low Transport potential. FA YA.	
3	S4	0	30		Outside of Harvest Area Low Transport potential. FA YA.	
5	S6	0	20		Outside of Harvest Area Low Transport potential. FA YA.	
7	S6	0	20		Outside of Harvest Area Low Transport potential. FA YA.	
<b>Definitions</b>		<p>NCD Non-classified drainage</p> <p>FA Fall Away. Timber is to be felled away.</p> <p>YA Yard Away. Timber is to be yarded away. In order to improve deflection, cables are allowed to be suspended above the stream. <b>Non-fish streams:</b> merchantable leaners and danger trees which have been felled across the stream will by necessity be yarded across the stream.</p> <p>RS Retain Saplings within the RMZ (non-merchantable).</p> <p>FX Fall Across</p> <p>YX Yard Across. Stream bank protection measures: maximize deflection to minimize stream bank disturbance.</p> <p>YV Yard Vertically.</p> <p>MC Machine Clean transportable introduced large woody debris (LWD) and accumulations concurrent with yarding.</p> <p>HC Hand Clean introduced transportable debris.</p> <p>AHC Assess for Hand Cleaning post harvest based on stream transport capability. Stream cleaning will be done if necessary.</p> <p>NC No stream cleaning required.</p> <p>MFZ Machine Free Zone</p>				
<b>POST HARVEST STRATEGIES AND CONSTRAINTS</b>						
<b>ISSUE / CONCERN</b>		<b>ACTIONS TO ACCOMMODATE (ACCESS, SILVICULTURE, ENVIRONMENTAL RISK, HAZARD ABATEMENT, ETC.)</b>				
<b>Debris Management</b>		Road side harvesting: Assess roadside slash accumulation levels post harvest. Scatter or pile and burn as required.				
<b>Vegetation and Sediment Control</b>		<p>Road side harvesting: All areas of exposed soil &gt;0.1 ha. will be seeded with preferred seed as defined below (from the FSP Sunshine Coast Operating Area) upon completion of operations. Maintain all natural watercourses.</p> <p><b>“preferred seed”</b> means seed with the following attributes:</p> <ol style="list-style-type: none"> <li>a) high sod-forming content, except in areas that are planted with tree seedlings;</li> <li>b) has been certified by the Canadian Seed Growers Association that the seed; <ol style="list-style-type: none"> <li>i. meets Common #1 Forage Grade or better standards for varietal purity established by the Association for seed of that kind of species (Seeds Act, Seeds Regulation S. 2(1)); and</li> <li>ii. is of native origin.</li> </ol> </li> </ol>				
<b>Deactivation and Access</b>		DK 1 and DK 2 are non-permanent access structures that will be permanently deactivated post harvest (maintain 4x4 access). Ensure that surface water flow patterns are maintained in perpetuity with cross ditches and/or water bars.				