

Field's Lease

Ref. No.:

110

ECOLOGICAL RESERVES COLLECTION
GOVERNMENT OF BRITISH COLUMBIA
VICTORIA, B.C.
V8V 1X4

ECOLOGICAL RESERVES COLLECTION
GOVERNMENT OF BRITISH COLUMBIA
VICTORIA, B.C.
V8V 1X4

ECOLOGICAL RESERVE # 33

" Field's Lease "

report on the fencing of the reserve

and Flora and Fauna observations

May 1977

G.Sirk
L.Bayliss

Work accomplished on the Reserve:

- 2770 feet of fence erected
- one pedestrian gate built at the northern corner
- rubbish removed from within reserve
- 1000 feet of old fence removed, some materials reused in new fence
- Flora and fauna observations carried out and recorded

Contents of this report:

- flora and fauna distribution map
- pictures of the reserve
- notes on vegetation
- notes on fauna
- bird checklist
- summary of materials used

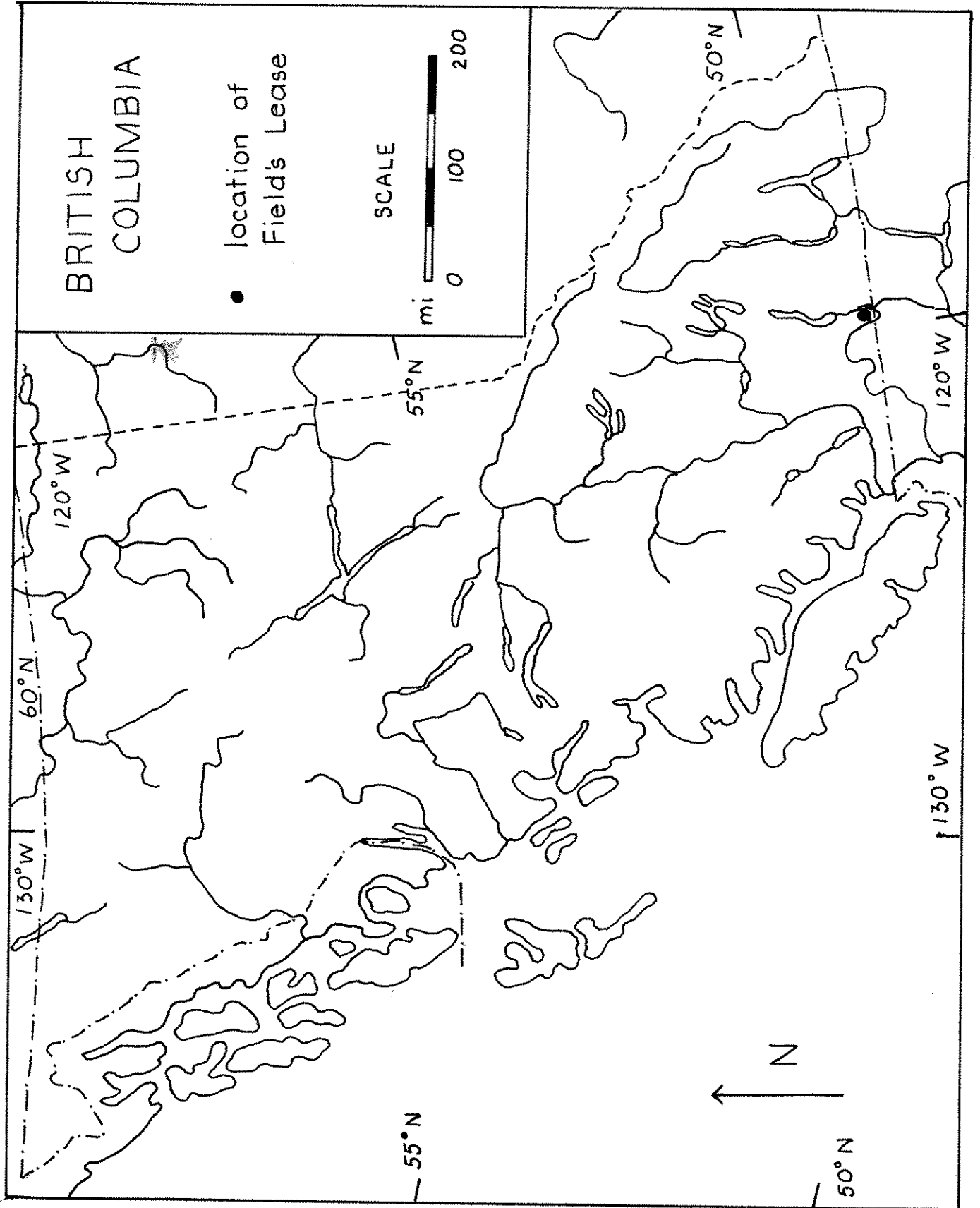
List of materials used:

- 8 rolls 40" page wire and one box staples
- 1 roll barbed wire
- 175 wooden posts
- 25 steel posts

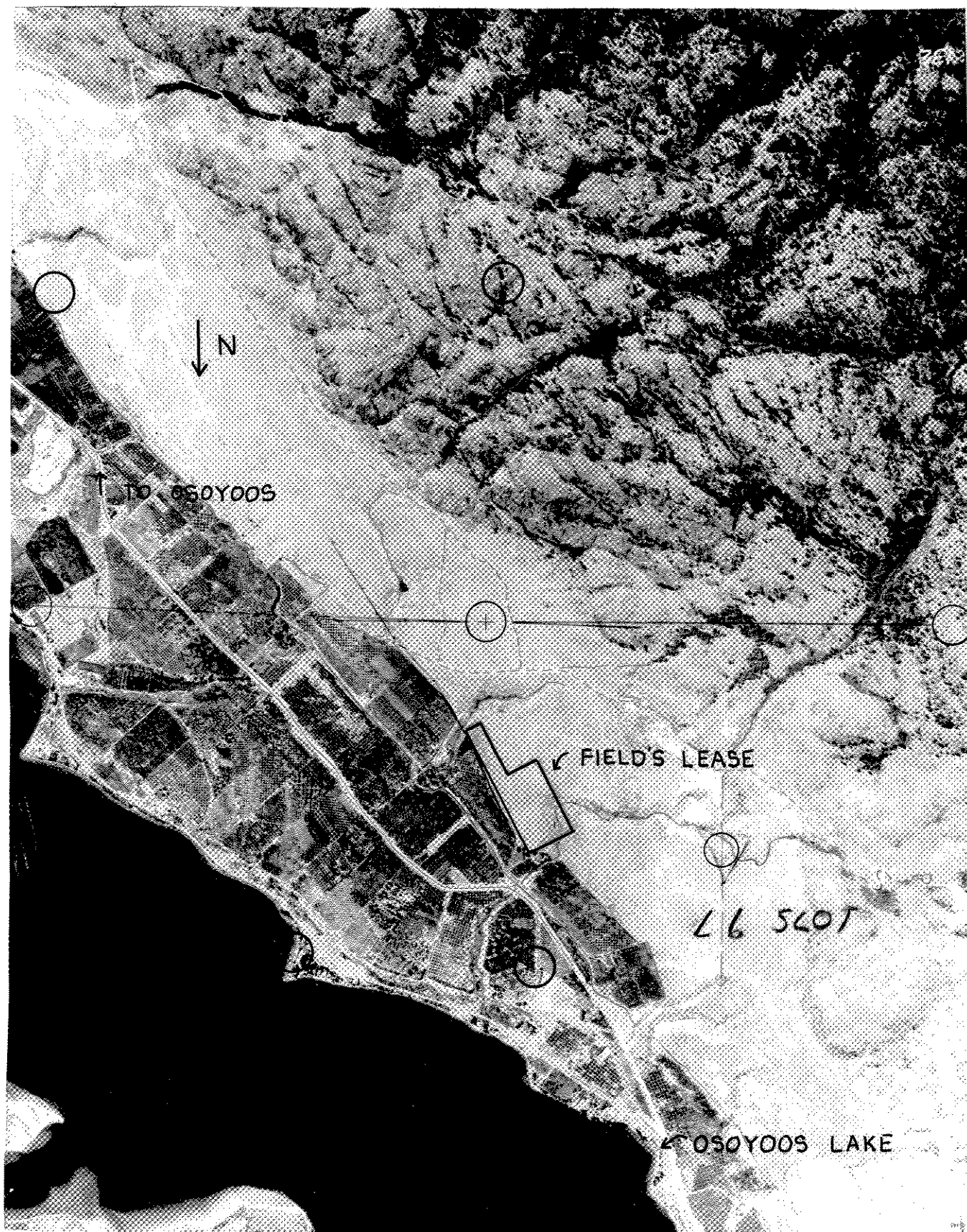
Aproximate value of materials:\$1450.00

Aproximate cost of sub-contracted work : \$ 60.00

Aproximate cost of labour,materials,etc.: \$ 4000.00



Location of Field's Lease Ecological Reserve.





North slope of the knoll.



NW corner of reserve.



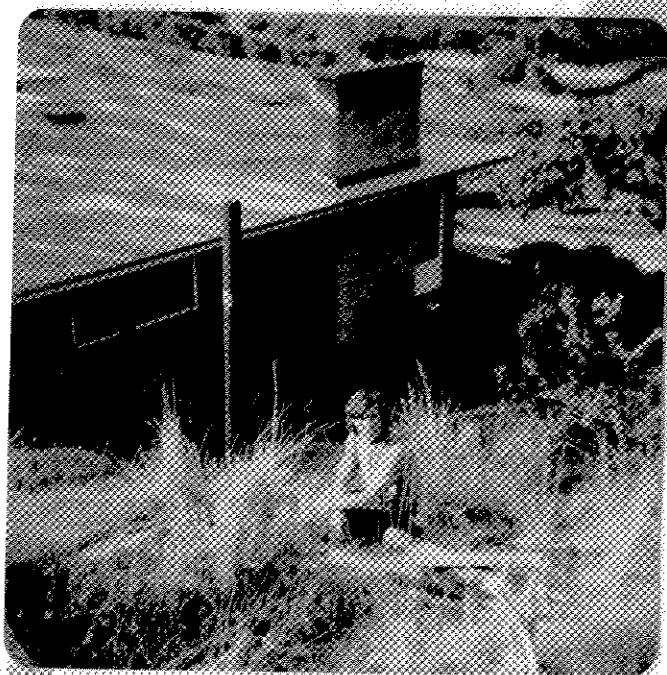
View from reserve, south.



The gully, north.



part of rubbish
picked up within
reserve.



fence line near
North corner

NOTES ON VEGETATION

The reserve consists of a rocky knoll, a seepage gully, and sandy flats (see map at back cover). It is a semi-desert, characterized by antelope bush (Purshia tridentata), big sage (Artemisia tridentata), rabbitbush (Brylavia graveolens), and the Cactus Opuntia polyacantha. Other common plants, found during late May, were bluebunch wheatgrass (Cyropyron spicatum), needlegrass (Stipa sp.), cheatgrass (Bromus sp.), Erigeron linearis, Lewisia rediviva, Phlox longifolia, yarrow (Achillea millefolium), oysterplant (Inasopogon dubius), Phacelia linearis. The grasses and cactus appeared most abundant on the sand flats, while Lewisia seemed to be more common in the rockier places. In the gully were found many moisture-loving plants: Veronica americana, Typha latifolia (one small group), Salix spp, young Populus trichocarpa, plus rushes and grasses, Equisetum sp, and white clematis (Clematis ligusticifolia) which was growing

along the old fence that ran through the gully. The moisture comes from the uplands to the west; it apparently seeps through the sand, and when it reaches the rock of the knoll, it is forced to the surface (see map). There was once a fair amount of water in this spot. A local rancher pointed out that the spring was once used to supply water to ~~the~~ cattle; there is an old trough just outside the Reserve, which used to catch the water. During late May, the water level at the gully, at the north fence line, was about 2 feet beneath the ground surface. The soil ~~was~~ ^{is} fine-textured here, and very moist. On the sandy west wall of this gully is a large and vigorous patch of poison ivy. The rock knoll has steep sides along ~~the~~ its north, ~~and~~ west, and east sides, ~~and~~ steepest on the east. On this side, the shade provided by the rock ledges allows plants such as Amelanchier canadensis and Rosa ~~sp.~~ mutkana to grow. There are a few stunted ^{here} chokecherry (Prunus emarginata) trees, too; there are a couple of shrub-like individuals of this plant on the west side of the knoll as well.

FAUNA

Among the animals found on the reserve were a blue racer, ~~a~~ ^{and} about 40" long, a bull snake about the same size, [^]a coyote. There are two known ant hills (^{the} red ants) on the reserve (see ~~pages~~ ^{map}), and several butterflies were seen. The following is a list of the birds found on or near the reserve, during the period from May ~~1925~~ 9-25.

1) TURKEY VULTURE - ^{seen} ~~seen~~ flying over the reserve once

2) COOPER'S HAWK - immature seen ~~twice~~ twice

3) RED-TAILED HAWK - one immature

4) GOLDEN EAGLE - one

5) KESTREL - four sightings, flying over reserve

6) CALIFORNIA QUAIL - one pair seen consistently at north end of reserve (see map), and 3-6 more birds seen, ^{usually all} ~~often~~ together, almost every day in the bush & trees by the old Field's house and at the NE corner of the reserve (^{again} see map)

7) RING-NECKED PHEASANT - one [♂] & one ♀ seen ^{at} in orchard ~~at~~ beside the reserve ~~at~~

- 8) KILLDEER - ^{single bird} four sightings, flying over reserve
- 9) RING-BILLED GULL - ^{one or two} seen periodically flying over reserve
- 10) MOURNING DOVE - often seen and heard, at least 2 pair
- 11) POOR WILL - heard just about every ~~night~~ evening, in the general area
- 12) LEWIS WOODPECKER - ^{individual} seen a couple of times at the SW corner of the reserve
- 13) HAIRY WOODPECKER - one sighting, May 21, on a sycamore(?) at the NE corner near the house
- 14) EASTERN KINGBIRD - ^{in area} arrived ^{at} on May 21, one pair seen, near power line ~~and~~ at NE corner
- 15) WESTERN KINGBIRD - seen consistently, one pair nesting near power line ~~at~~ near Field's house (see map)
- 16) VIOLET-GREEN SWALLOW - 2 sightings, mid-May
- 17) ROUGH-WINGED SWALLOW - 3 ^{sightings} single ~~birds~~, mid-May
- 18) BLACK-BILLED MAGPIE - 3 sightings
- 19) RAVEN - one or two birds seen a few times flying over
- 20) COMMON CROW - one or two seen fairly often over reserve
- 21) ROCK WREN - ^{pair} nesting at top of rock knoll (see map), [♂] calling almost every morning & stayed quiet during the hottest parts of the day

- 22) ROBIN - one or 2 birds ^{or heard} ^{seen} almost every day - ~~present~~ ^{present} much of the time, near houses usually
- 23) CEDAR WAXWING - arrived May 21, NE corner and ~~near~~ ⁱⁿ orchard, one or 2 birds
- 24) YELLOW WARBLER - one sighting, ^{May} ~~April~~ 14, near Field's house outside of reserve
- 25) YELLOW-RUMPED WARBLER - heard several times, ~~NE~~ corner near Field's house, outside of reserve
- 26) WILSON'S WARBLER - in trees near Field's house, outside of reserve, almost consistently, one or two
- 27) HOUSE SPARROW - several birds by the old Field's house
- 28) WESTERN MEADOWLARK - one pair, singing ~~one~~ throughout the time, ^{mean} ~~at~~ SW part of reserve
- 29) NORTHERN ORIOLE - nest in sycamore (?) beside the old Field's house, one pair, ~~plus (Oreoscoptes scirpaceus)~~ ^{on nest} ~~(Oreoscoptes scirpaceus)~~, territory appears to be very large, for the ♂ was seen beyond the west ~~side~~ boundary of the reserve
- 30) WESTERN Tanager - ~~one~~ heard twice, May 19 & 21, ^{in trees} ^{at} Field's house
- 31) HOUSE FINCH - 4-6 birds, in trees near Field's house ~~resident~~
- ^{AMERICAN} GOLDFINCH - consistently seen or heard, ~~in trees~~ usually near the Field's house, 1-5 birds, usually 2 or 4

33) SAVANNAH SPARROW - 2 sightings; a single bird on May 17, and two on May 21, ~~at or near~~ ^{part} SW ~~corner~~ of reserve.

34) LARK SPARROW - one sighting, May 9

35) WHITE-CROWNED SPARROW - one bird seen a few times throughout the work period, near Fields house (?)

BIRD LIST - Osageos Field's Lease

Turkey vulture	Violet-green swallow
Cooper's hawk	Rough-winged swallow
Red-tailed Hawk	Black-billed magpie
Golden Eagle	Raven
kestrel	Common crow
California quail	Rock wren
Ring-necked pheasant	Robin
Killdeer	* Cedar waxwing
Ring-billed gull	* Yellow warbler
Mourning dove	* Yellow-rumped warbler
Poor-will	* Wilson's warbler
Lewis woodpecker	* House sparrow
* Hairy woodpecker	Western meadowlark
Eastern kingbird	Northern oriole
Western kingbird	* Western Tanager
	* House finch
	Gold finch
	Savannah sparrow
	Lark sparrow
	White-crowned sparrow

Old cattle trough

GATE

← ROAD →

FIELD'S HOUSE

Northern Oriole's nest

American Goldfinch,
Wilson's Warbler, Quail,
House Finch

Western Kingbirds
nesting

Ring-necked
Pheasants

Horsetail (*Equisetum
hyemale*) growing

Rock Wrens
nesting

ROCKY KNOLL

Stunted
Chokecherry

SANDY,
GENTLY-SLOPING
AREA

Ant hill

Ant hill

FENCE

ORCHARD

POWER LINE

N

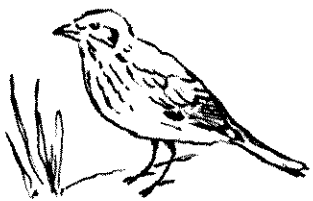
SCALE :

1 inch : 100 feet

Poison ivy
patch



Savannah
sparrows



Meadowlarks and
Lewis's woodpeckers
nesting



ECOLOGICAL
RESERVE # 33