



ROCKFISH CONSERVATION AREAS

Protecting British Columbia's Rockfish



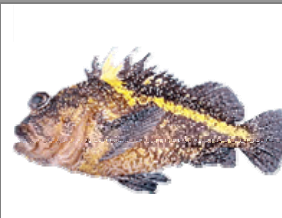
Yelloweye rockfish
(*Sebastes ruberrimus*)



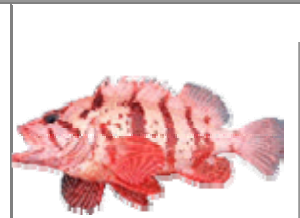
Quillback rockfish
(*Sebastes maliger*)



Copper rockfish
(*Sebastes caurinus*)



China rockfish
(*Sebastes nebulosus*)



Tiger rockfish
(*Sebastes nigrocinctus*)



Inshore rockfish identification



Yelloweye rockfish (*Sebastes ruberrimus*) are pink to orangey red in colour with bright yellow eyes. Juvenile fish are a darker red with two white stripes along the sides. These stripes fade as the fish grows and large fish may have one or no white stripe along the lateral line. There are two prominent ridges on the top of the head. Fins may be fringed in black. Found in steep rocky reef and boulder habitats from 50 m to 550 m in depth but most common in 150 m (82 fa) depths. Maximum length up to 91 cm (36 in).



Quillback rockfish (*Sebastes maliger*) are dark brownish black, mottled with orangey yellow. The lower anterior portion of the body is speckled brown. Dorsal fin spines are very high and moderately notched. The body is deep. Found in rocky habitats from the subtidal to 275 m in depth but most common between 50 m and 100 m (55 fa) in depth. Maximum length up to 61 cm (24 in).



Copper rockfish (*Sebastes caurinus*) are brown to copper in colour with pink or yellow blotches. A white stripe runs along the lateral line on the anterior two thirds of the body. Two dark, sometimes yellow, bars radiate from the eye. Found in kelp beds and rock to gravel habitats from the subtidal to 180 m in depth but most common in water less than 40 m (22 fa). Maximum length up to 66 cm (26 in).



China rockfish (*Sebastes nebulosus*) are black, speckled with yellow and white. A yellow stripe runs from the dorsal fin down and back along the lateral line. Found in rocky reef habitats from 5 m to 130 m but most common in 55 m depths (30 fa). Maximum length up to 45 cm (18 in).



Tiger rockfish (*Sebastes nigrocinctus*) are pale pink to red with five dark red or black vertical bands, sometimes brown with black vertical bands. Two dark bars radiate from the eye. Found among the rocks at 55 m to 375 m in depth but most common in 74 m (40 fa) depths. Maximum length up to 61 cm (24 in).



All charts in this booklet are used with permission from the Canadian Hydrographic Service of the Department.

Disclaimer: The charts provided in this booklet are not to be used for navigational purposes.

Published by: Fisheries and Oceans Canada, Pacific Region
Cat. No.: Fs144-1/2006E
ISBN: 0-662-44496-5
© Her Majesty the Queen in Right of Canada, 2006
All rights are reserved.

Également disponible en français sous le titre: *Aires de conservation des sébastes (ACS) : Protégeons les sébastes de la Colombie-Britannique.*

Website: www.pac.dfo-mpo.gc.ca/recfish

CD: Rockfish Conservation Areas: Protecting British Columbia's Rockfish

Cover image: K. L. Yamanaka

Rockfish Conservation Strategy

Help Protect B.C.'s Rockfish

There are 37 species of rockfish that are caught in fisheries off the coast of British Columbia. Inshore rockfish species (which include yelloweye, quillback, copper, china, and tiger) are usually caught with hook and line gear in rocky reef habitats. Monitoring and research programs in B.C. indicate that inshore rockfish, especially within the inland waters of Vancouver Island, are at low levels of abundance.

Fisheries and Oceans Canada (DFO) needs your help to protect and conserve inshore rockfish. Since 2002, catch restrictions, fishery monitoring, stock assessment programs, and Rockfish Conservation Areas (RCAs) have been established throughout the B.C. coast. DFO's rockfish conservation strategy is designed to alleviate further rockfish population declines. Within RCAs, inshore rockfish are protected from all mortality associated with recreational and commercial fisheries.

Within RCAs, the ONLY permitted fishing activities are:	
Recreational fishing <ul style="list-style-type: none">• invertebrates by hand picking or dive• crab by trap• shrimp/prawn by trap• smelt by gillnet	Commercial fishing <ul style="list-style-type: none">• invertebrates by hand picking or dive• crab by trap• prawn by trap• scallops by trawl• salmon by seine or gillnet• herring by gillnet, seine and spawn-on-kelp• sardine by gillnet, seine, and trap• smelt by gillnet• euphausiid (krill) by mid-water trawl• opal squid by seine• groundfish by mid-water trawl

Maps and descriptions of all 164 RCAs in B.C. are included in this booklet and are also available on DFO's website at www.pac.dfo-mpo.gc.ca/recfish. RCAs were established through an extensive public consultation process. Prior to fishing, fisheries resource users are encouraged to review the location of these RCAs and the permitted activities within RCAs.

Unlike salmon, rockfish do not survive well after catch and release. Because of this, there is no size limit for rockfish. Keep what you catch and move to another area if you have reached your rockfish limit.

Interesting facts about rockfish

- Many species of rockfish live to be over 100 years of age. In B.C., yelloweye and quillback rockfish have been aged to 118 and 95 years old, respectively.
- Rockfish give birth to live young, after a one to two month gestation period.
- Inshore rockfish are readily caught using baited hooks and artificial lures. This means that they are very susceptible to over-fishing since the majority of fish hooked and released do not survive.
- There are 102 species of rockfish worldwide; about 38 of these live in B.C.'s waters.
- Inshore rockfish live on rocky reefs and do not swim far from their home reef.
- *Red snapper* and *rockcod* are common names used to when selling many species of rockfish, including yelloweye and quillback.

How to use this booklet to find RCAs

Do you know the Area and Name of the RCA?

Yes: use the Table of Contents on page iv. RCAs are listed by Area, then alphabetically by name. There is also an index on page 173 of all RCAs, listed alphabetically by name.

OR

- No:**
1. use the map below to locate the geographic region or Area
 2. turn to the indicated page for the Area
 3. find the RCA on the overview map
 4. turn to the indicated page for the RCA

This booklet contains maps and descriptions of all 164 RCAs on the B.C. coast. RCAs are organized by geographic region and Area, as shown in the map below. The booklet is laid out numerically by Area. The RCAs within each Area are then presented geographically from North to South. An overview page shows the RCAs within a region or an Area with a page number for each RCA.

The Table of Contents on the following page is organized by Area. Within each Area, the RCAs are listed alphabetically.

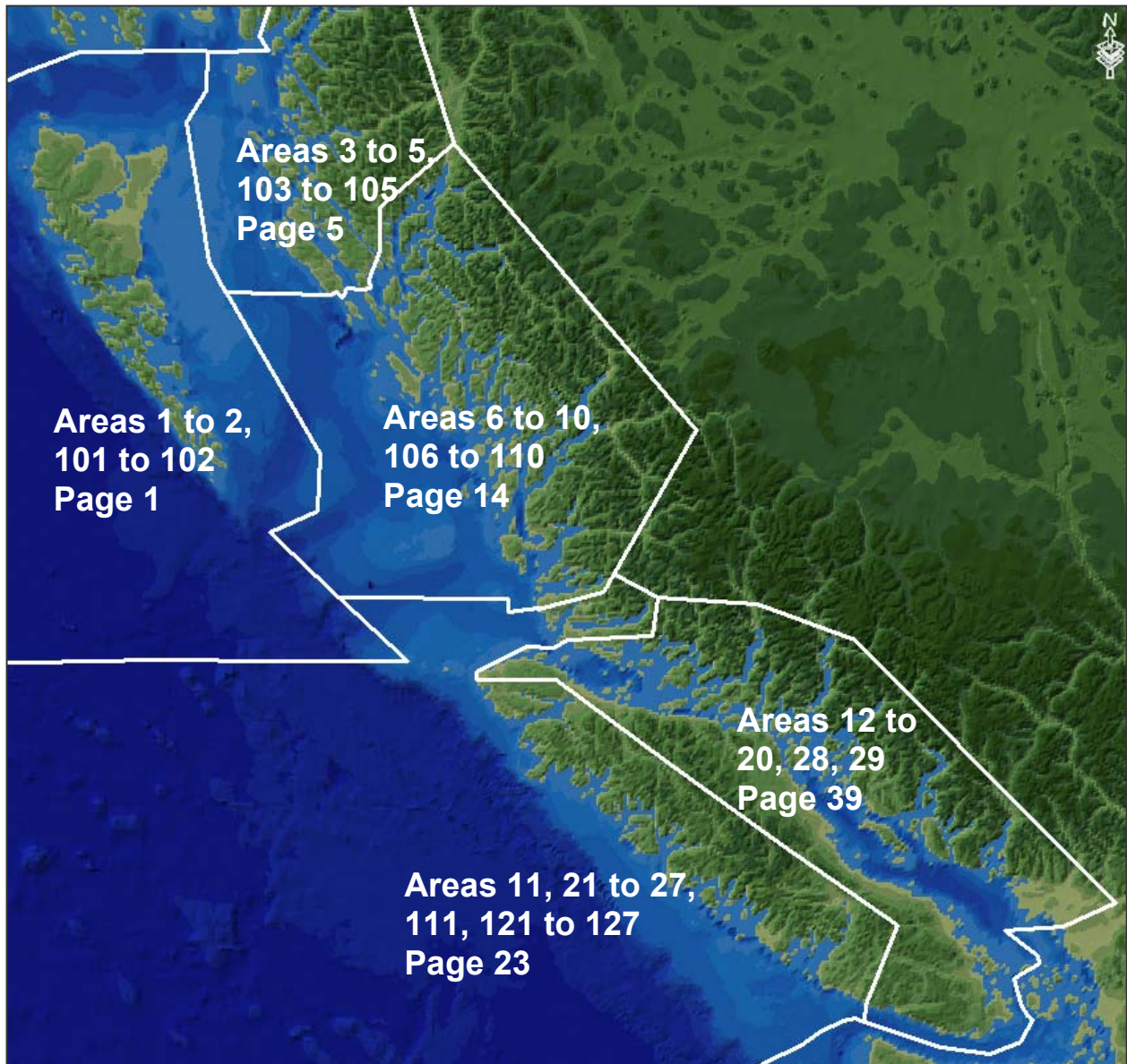
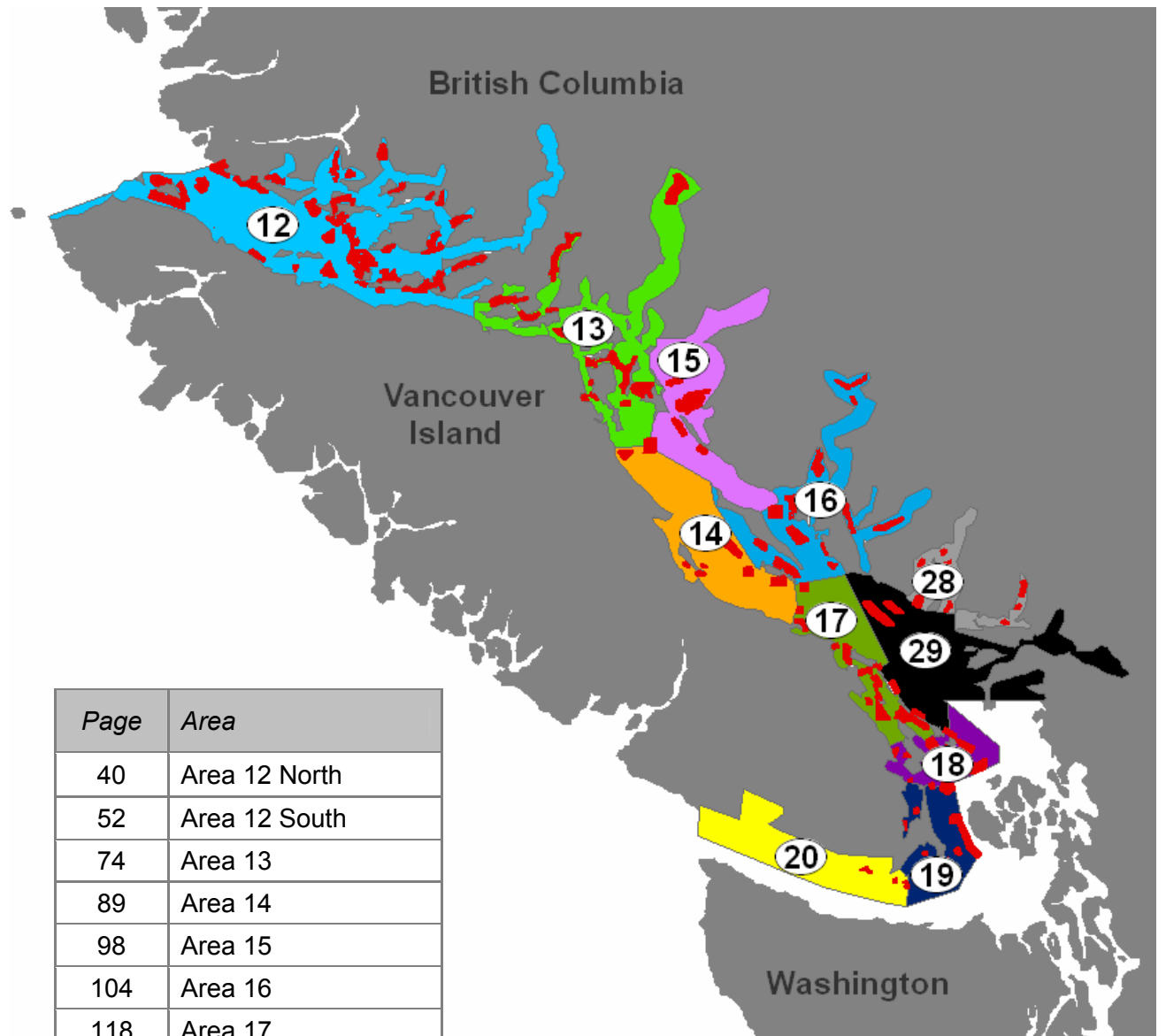


Table of Contents

Areas 1 to 2, 101 to 102	1		
Frederick Island	2	Browning Passage – Hunt Rock	43
Lyell Island	3	Bolivar Passage	44
South Moresby	4	Shelter Bay	45
		Browning Islands to Raynor Group	46
		Drury Inlet – Muirhead Islands	47
Areas 3 to 5, 103 to 105	5	Hardy Bay – Five Fathom Rock	48
Dunira	6	Numas Islands	49
Hodgson Reefs	7	Susquash	50
Gull Rocks North	8	Haddington Passage	51
Gull Rocks South	8		
Stephens Island	9	Area 12 South	52
Porcher Peninsula	10	Burley Bay – Nepah Lagoon	53
Goschen	11	Mackenzie – Nimmo	54
West Banks Island	12	Wakeman Sound	55
North Danger Rocks	13	Dickson – Polkinghorne Islands	56
		Nowell Channel	57
Areas 6 to 10, 106 to 110	14	Greenway Sound	58
Otter Passage	15	Belleisle Sound	59
West Aristazabal Island	16	Kwatsi Bay	60
Kitasu Bay	17	Bond Sound	61
McMullin Group	18	Thompson Sound	62
Goose Island	18	Salmon Channel	63
West Calvert	19	Weynton Passage	64
Fish Egg Inlet	20	Eden – Bonwick – Midsummer – Swanson Islands	65
Smith Sound	21	Port Elizabeth	67
Storm Islands	22	Lower Clio Channel	68
		Viscount Island	69
Areas 11, 21 to 27, 111, 121 to 127	23	Havannah Channel	70
Scott Islands	24	Upper Call Inlet	71
Topknot	25	Cracroft Point South – Sophia Islands	72
Holberg Inlet	26	West Cracroft – Boat Bay	73
Brooks Bay	27		
Checleset Bay	28	Area 13	74
West of Bajo Reef	29	Wellborne	75
Estevan Point	30	Forward Harbour	76
Bedwell Sound	31	Loughborough Inlet	77
Saranac Island	32	Bute Inlet North	78
Vargas Island to Dunlap Island	33	Chancellor Channel West	79
Broken Islands Group	34	Chancellor Channel East	80
Folger Passage	36	Walkem Islands to Hemming Bay	81
Pachena Point	37	Thurston Bay	82
Dare Point	38	Kanish Bay	83
Carmanah	38	Octopus Islands to Hoskyn Channel	84
		Read – Cortes Islands	85
Areas 12 to 20, 28, 29	39	Deepwater Bay	86
Area 12 North	40	Menzies Bay	87
Bate – Shadwell Passage	41	Maud Island	87
Goletas Channel	42	Heriot Bay	88

Area 14	89	Area 18	132
Mittlenatch Island	90	Mayne Island North	133
Oyster Bay	91	Prevost Island North	134
Ajax – Achilles Bank	92	Navy Channel	135
Baynes Sound – Ship Point	93	Bell Chain Islets	136
Savoie Rocks – Maude Reef	94	Maple Bay	137
Chrome Island	95	Burgoyne Bay	137
Sisters Islets	96	Russell Island	138
Lasqueti Island South	97	Portland Island	139
		Bedwell Harbour	140
Area 15	98	South Saturna	141
Pendrell Sound	99	Patey Rock	142
Teakerne Arm	100	Coal Island	143
Desolation Sound	101		
Copeland Islands	102	Area 19	144
Dinner Rock	103	Brethour, Domville, Forrest, Gooch Islands	145
		Brentwood Bay	146
Area 16	104	Mid Finlayson Arm	147
Queens Reach East	105	D'Arcy Island to Beaumont Shoal	148
Princess Louisa Inlet	106	Duntze Head (Royal Roads)	149
Queens Reach West	107	Trial Island	150
Hotham Sound	108	Discovery – Chatham Islands	151
Sinclair Bank	109	Area 20	144
Hardy Island	110	Bentinck Island	152
Nelson Island	110	Race Rocks	152
Skookumchuck Narrows	111	Becher Bay East	153
Salmon Inlet	112	Sooke Bay	154
Davie Bay	113		
Malaspina Strait	114	Area 28	155
McNaughton Point	115	Domett Point	156
Thormanby Island	116	Woolridge Island	157
Sabine Channel – Jervis – Jedediah Islands	117	Pam Rock	158
		Mariners Rest	159
Area 17	118	West Bay	160
Lasqueti South – Young Point	119	Upper Centre Bay	160
Ballenas Island	120	Lions Bay	161
Nanoose – Schooner Cove	121	Bowyer Island	162
Departure Bay	122	Pasley Island	163
Northumberland Channel	123	Passage Island	164
De Courcy Island North	124	West Vancouver	164
Reynolds Point – Link Island	124	Eastern Burrard Inlet	165
Gabriola Passage	125	Indian Arm – Twin Islands	166
Danger Reefs	126	Indian Arm – Croker Island	167
Ruxton – Pylades Islands	127		
Coffin Point	128	Area 29	168
Thetis – Kuper Islands	129	McCall Bank	169
Saltspring Island North	130	Halibut Bank	170
Trincomali Channel	131	Valdes Island East	171
		Galiano Island North	172
		Index	173

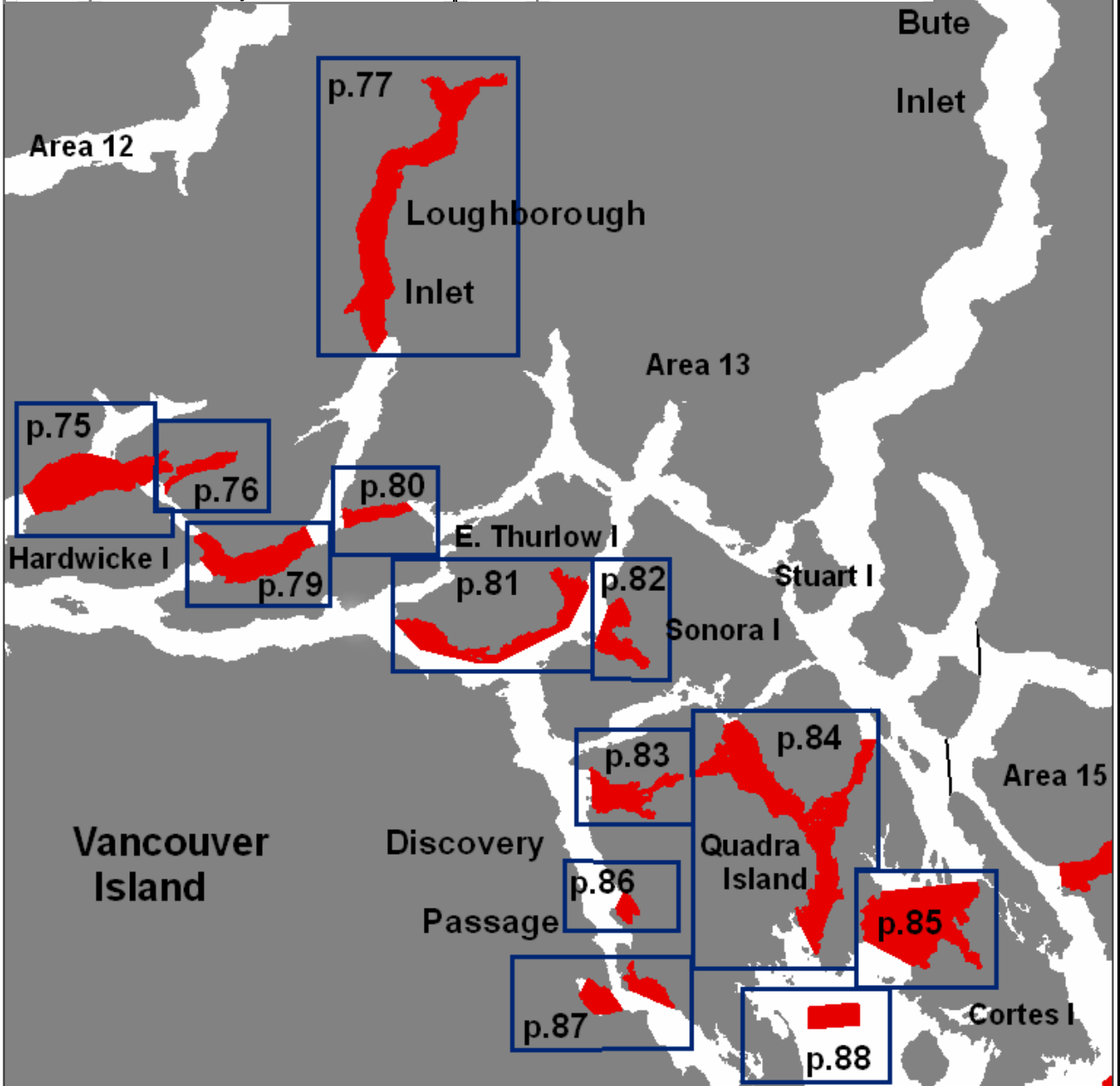
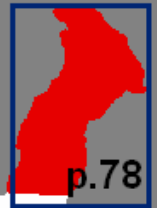
Areas 12 to 20, 28, 29



<i>Page</i>	<i>Area</i>
40	Area 12 North
52	Area 12 South
74	Area 13
89	Area 14
98	Area 15
104	Area 16
118	Area 17
132	Area 18
144	Area 19
144	Area 20
155	Area 28
168	Area 29

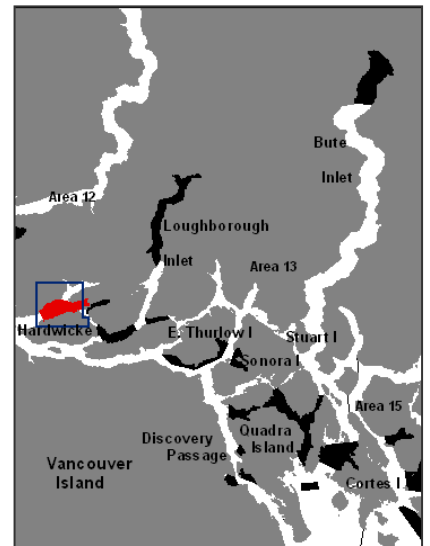
Area 13

Map/ page	Name	Map/ page	Name
75	Wellborne	83	Kanish Bay
76	Forward Harbour	84	Octopus Islands to Hoskyn Channel
77	Loughborough Inlet	85	Read – Cortes Islands
78	Bute Inlet North	86	Deepwater Bay
79	Chancellor Channel West	87	Menzies Bay
80	Chancellor Channel East	87	Maud Island
81	Walkem Islands to Hemming Bay	88	Heriot Bay
82	Thurston Bay		

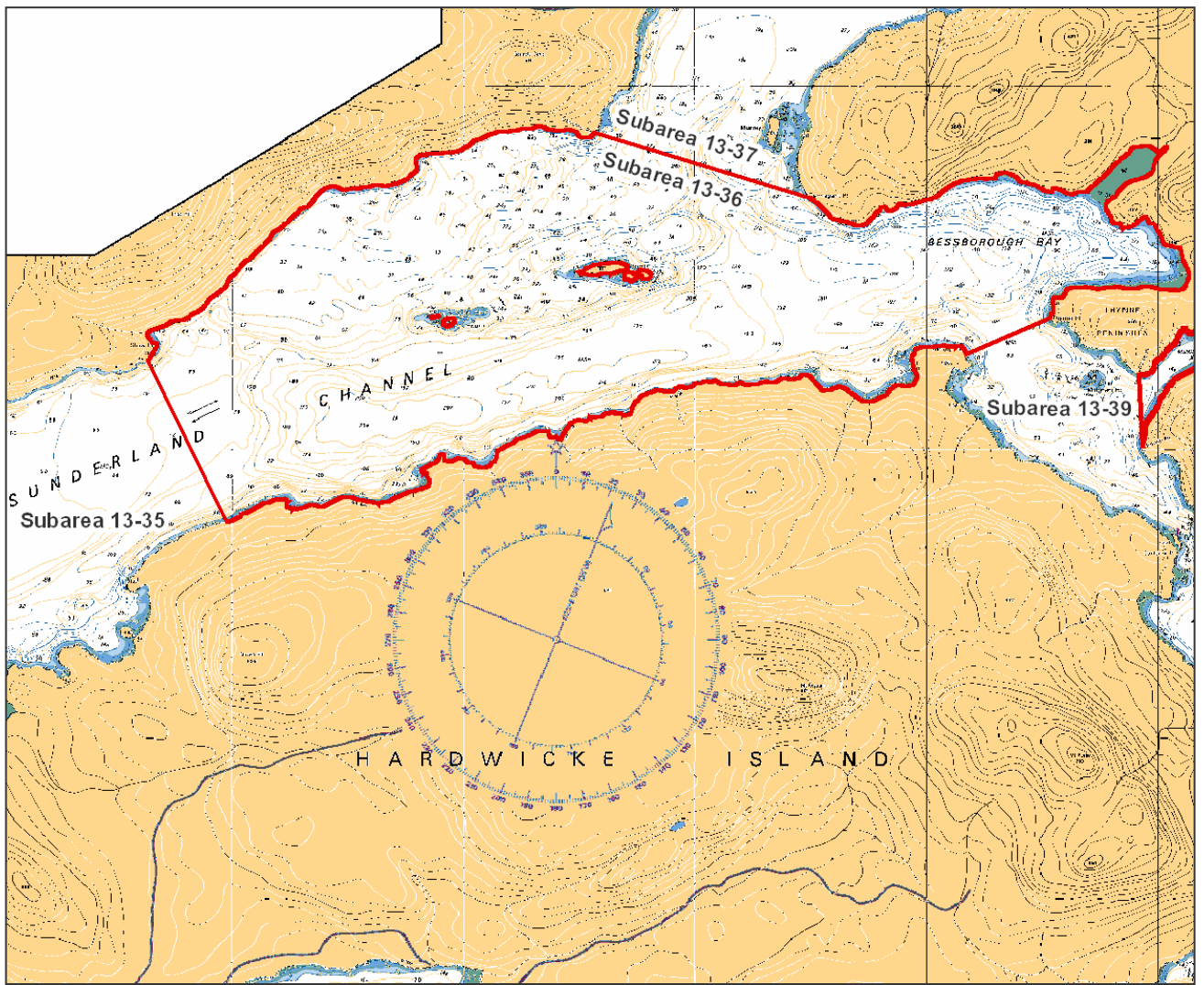


Area 13

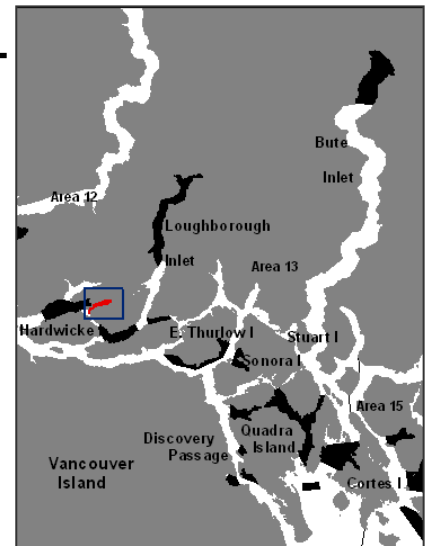
Subarea 13-36.



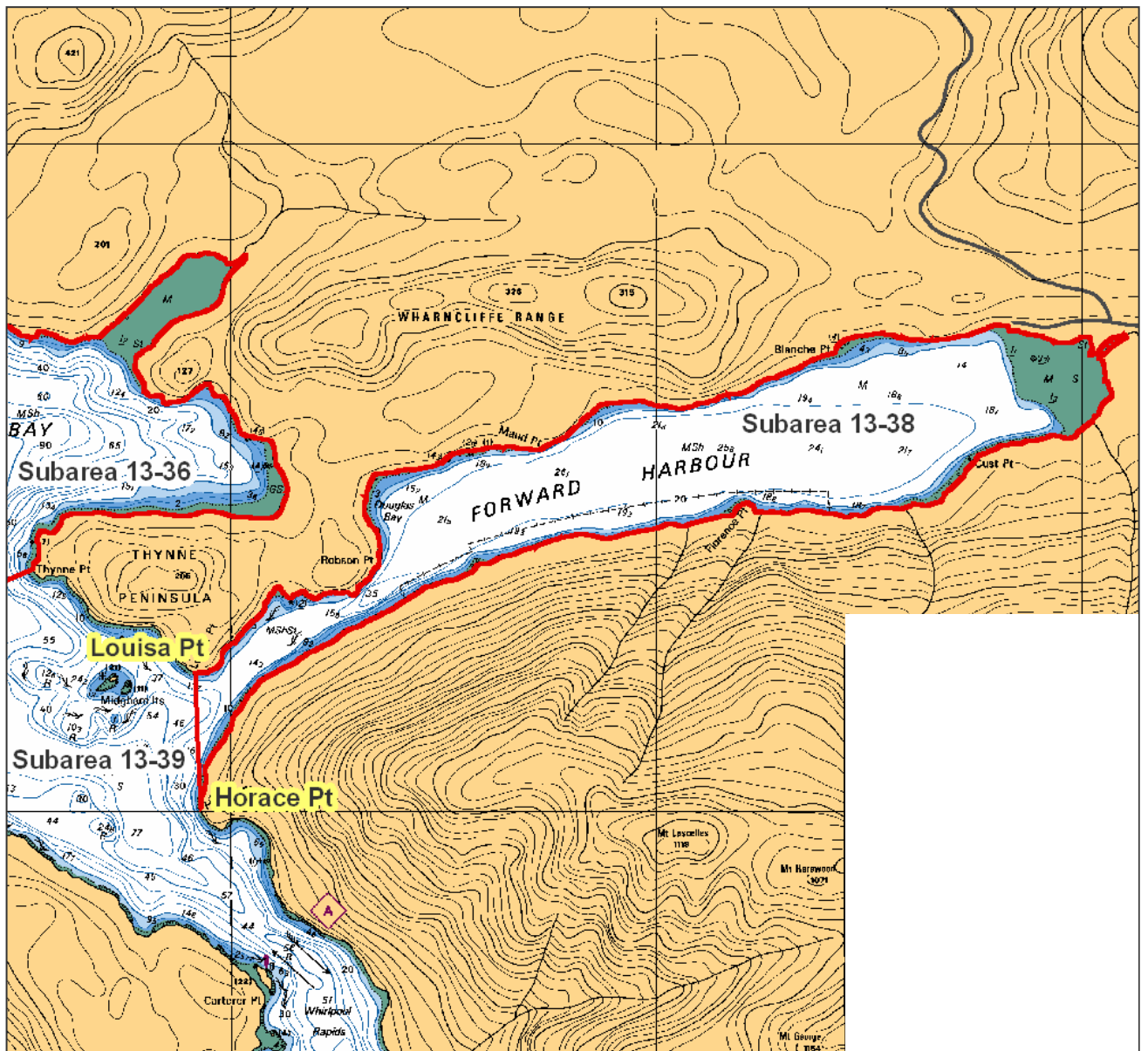
Area 13



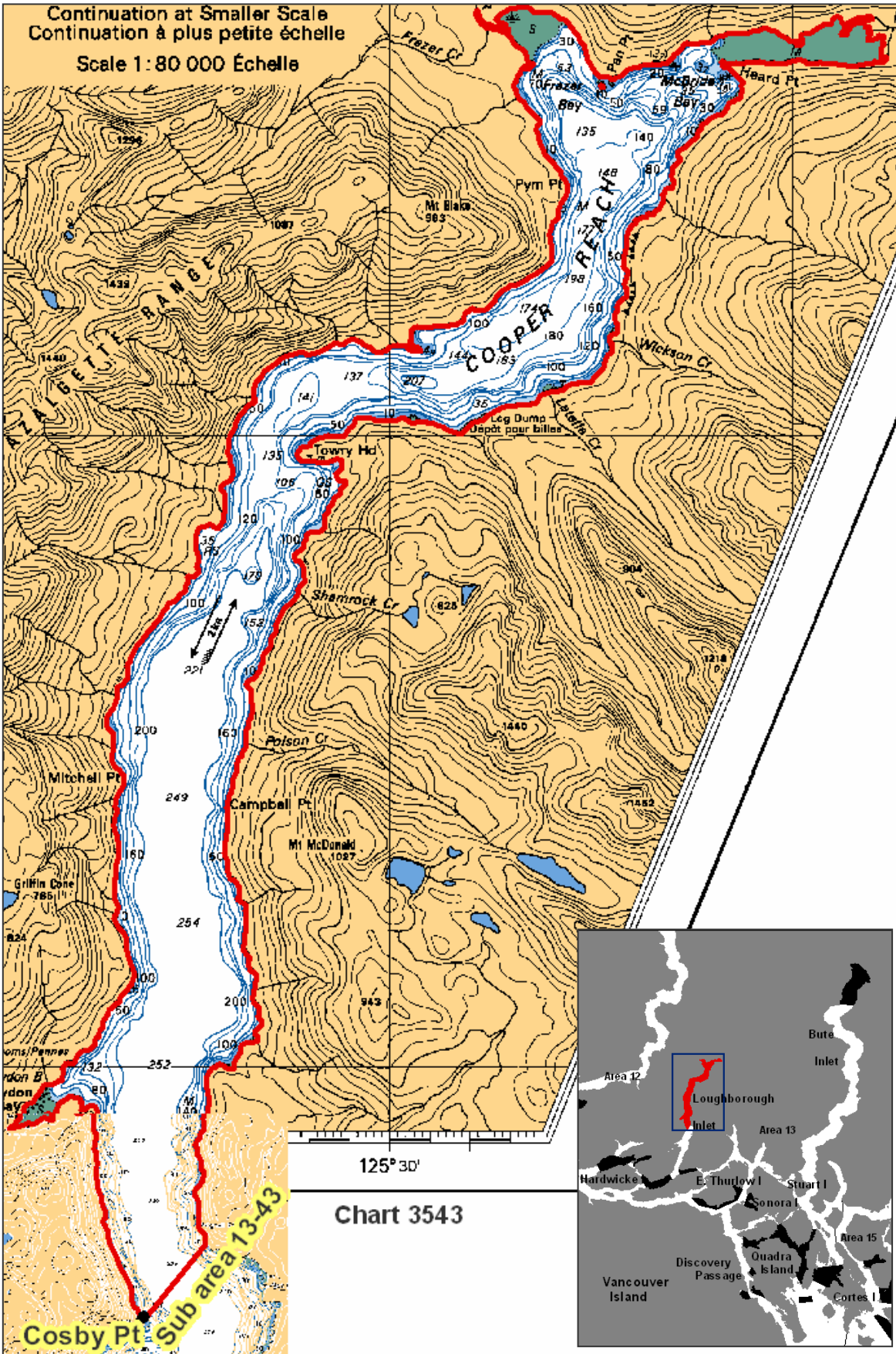
Subarea 13-38.



Area 13



Subarea 13-43.



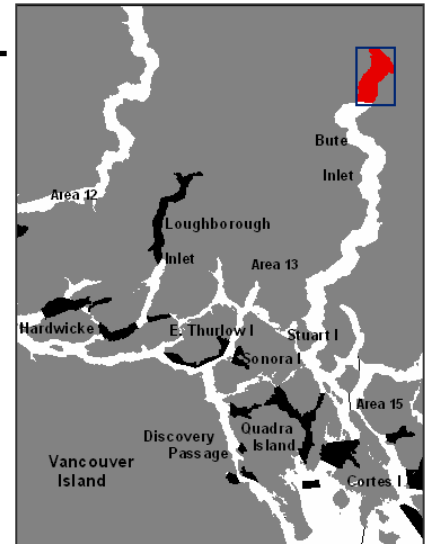
Area 13

Bute Inlet North

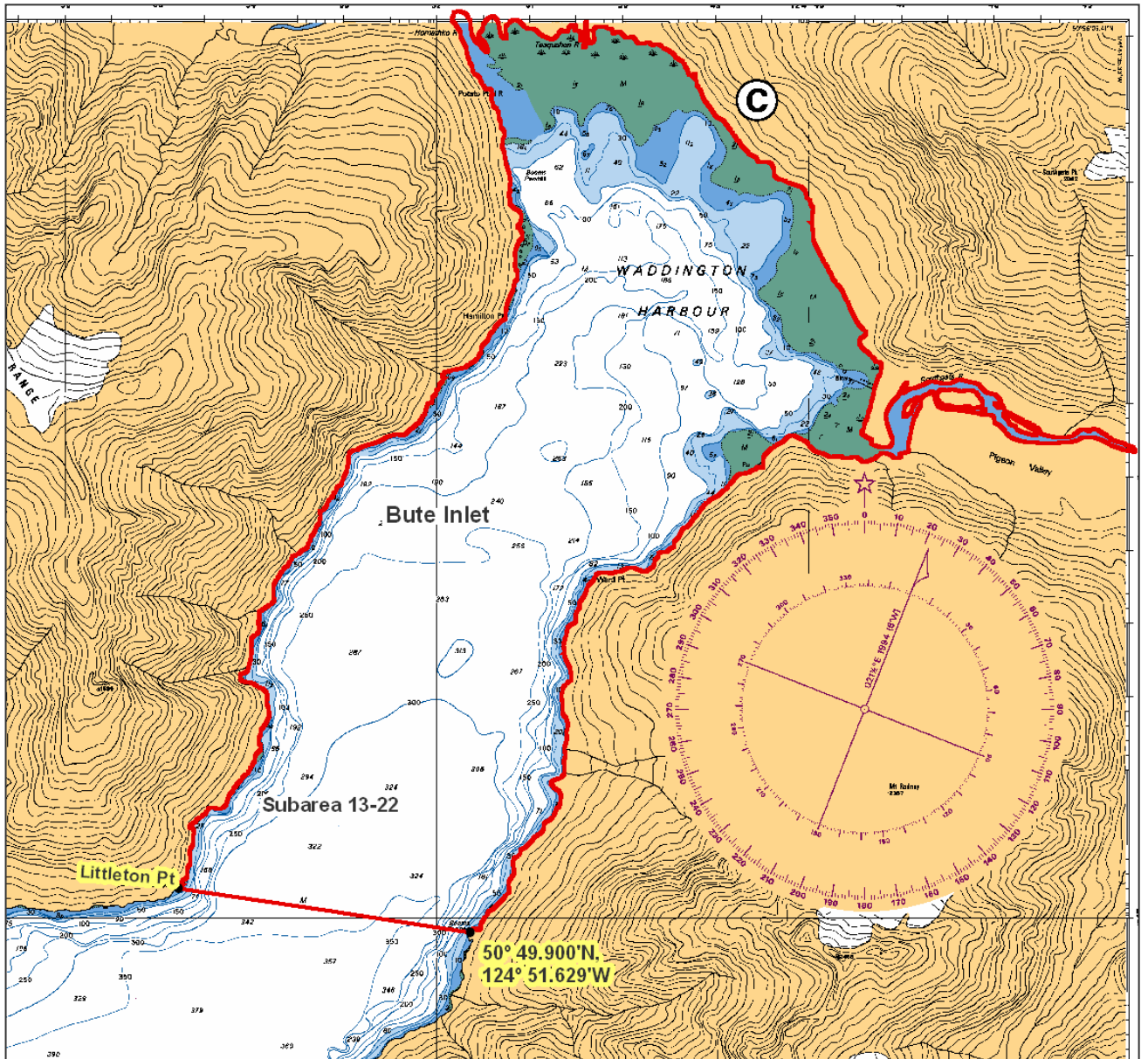
Chart 3542

Those waters of Subarea 13-22 that lie northerly of a line:

from	50°50.200'N	124°54.770'W	Littleton Point
to	50°49.900'N	124°51.629'W	shoreline



Area 13



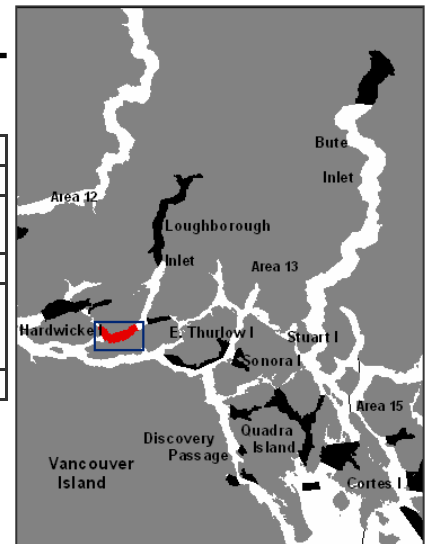
Chancellor Channel West

Chart 3543 & 3544

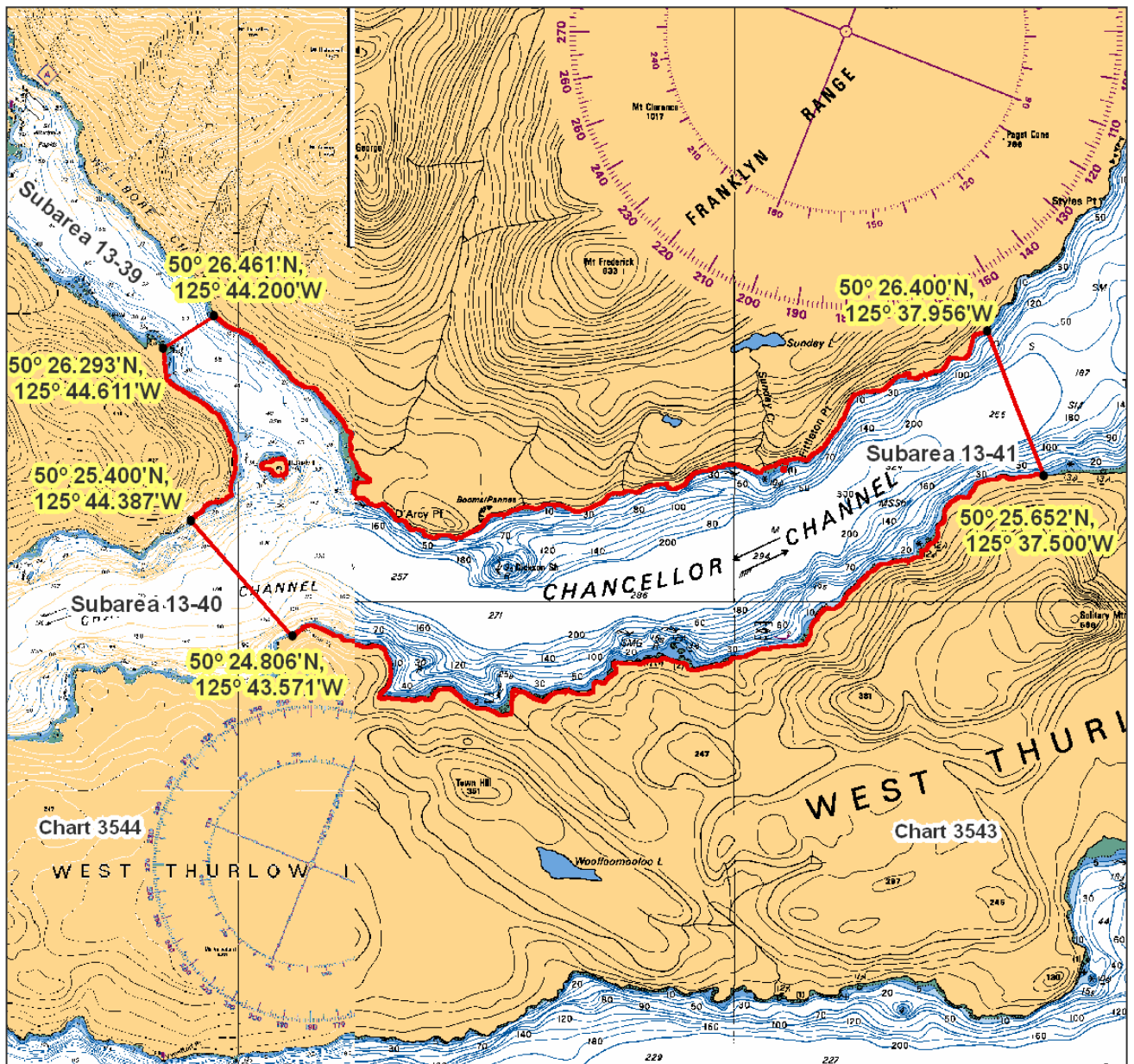
Those waters of Subareas 13-39 to 13-41 that lie inside a line that:

begins at	50°26.293'N	125°44.611'W	shoreline
then to	50°26.461'N	125°44.200'W	shoreline
then easterly following the shoreline to	50°26.400'N	125°37.956'W	shoreline
then to	50°25.652'N	125°37.500'W	shoreline
then westerly following the shoreline of West Thurlow Island to	50°24.806'N	125°43.571'W	West Thurlow Island
then to	50°25.400'N	125°44.387'W	Hardwicke Island

then northerly following the shoreline of Hardwicke Island to the beginning point.



Area 13

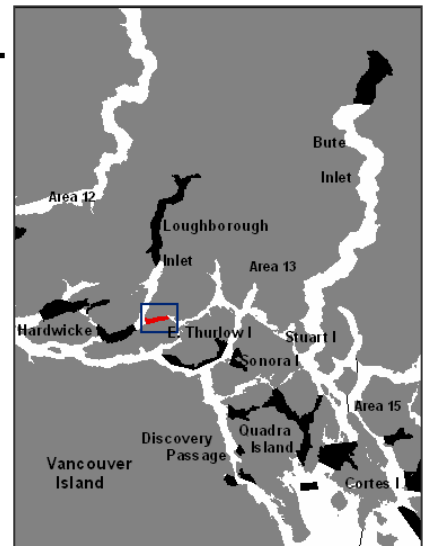


Chancellor Channel East

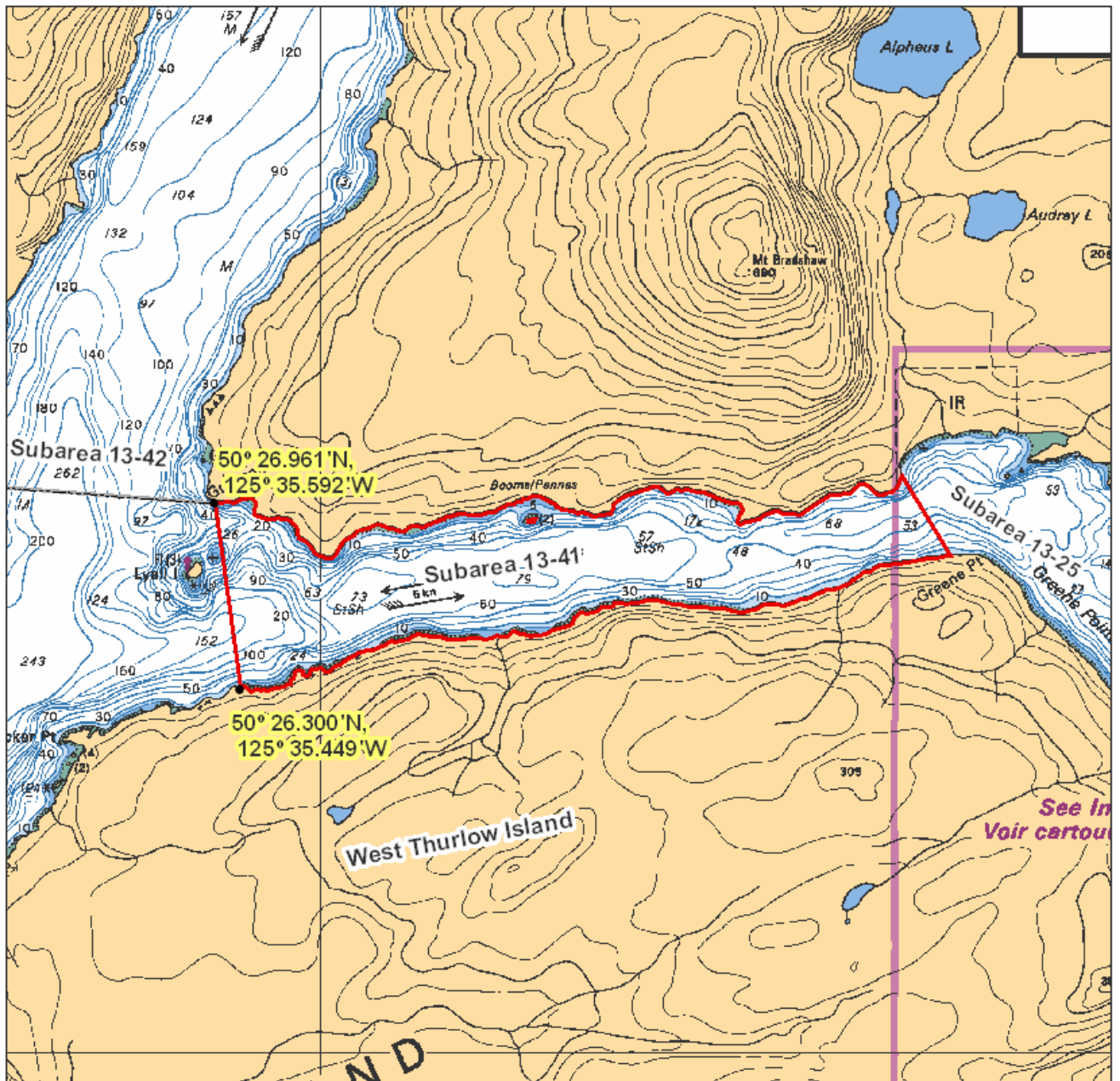
Chart 3543

Those waters of Subarea 13-41 that lie easterly of a line:

from	50°26.961'N	125°35.592'W	Grismond Point
to	50°26.300'N	125°35.449'W	shoreline



Area 13

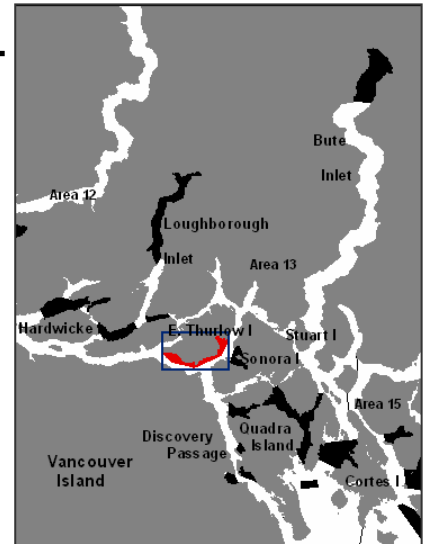


Walkem Islands to Hemming Bay Chart 3543

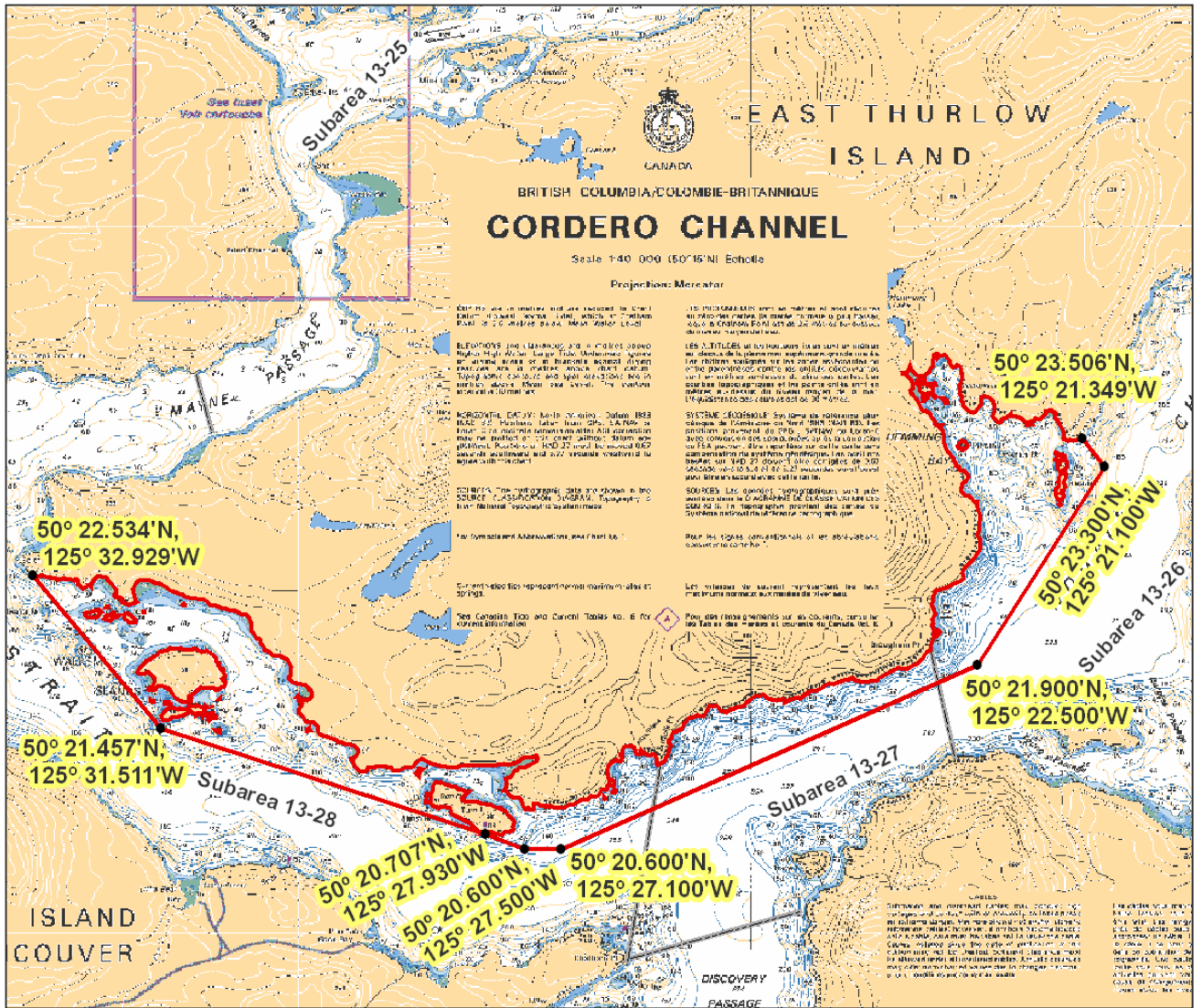
Those waters of Subareas 13-26 to 13-28 that lie inside a line that:

begins at	50°22.534'N	125°32.929'W	Edith Point
then to	50°21.457'N	125°31.511'W	Walkem Islands Light
then to	50°20.707'N	125°27.930'W	Turn Islands Light
then to	50°20.600'N	125°27.500'W	in water
then to	50°20.600'N	125°27.100'W	in water
then to	50°21.900'N	125°22.500'W	in water
then to	50°23.300'N	125°21.100'W	in water
then to	50°23.506'N	125°21.349'W	Jackson Point

then westerly following the shoreline to the beginning point.



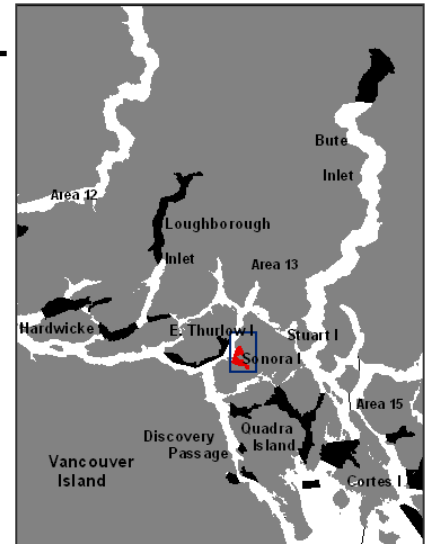
Area 13



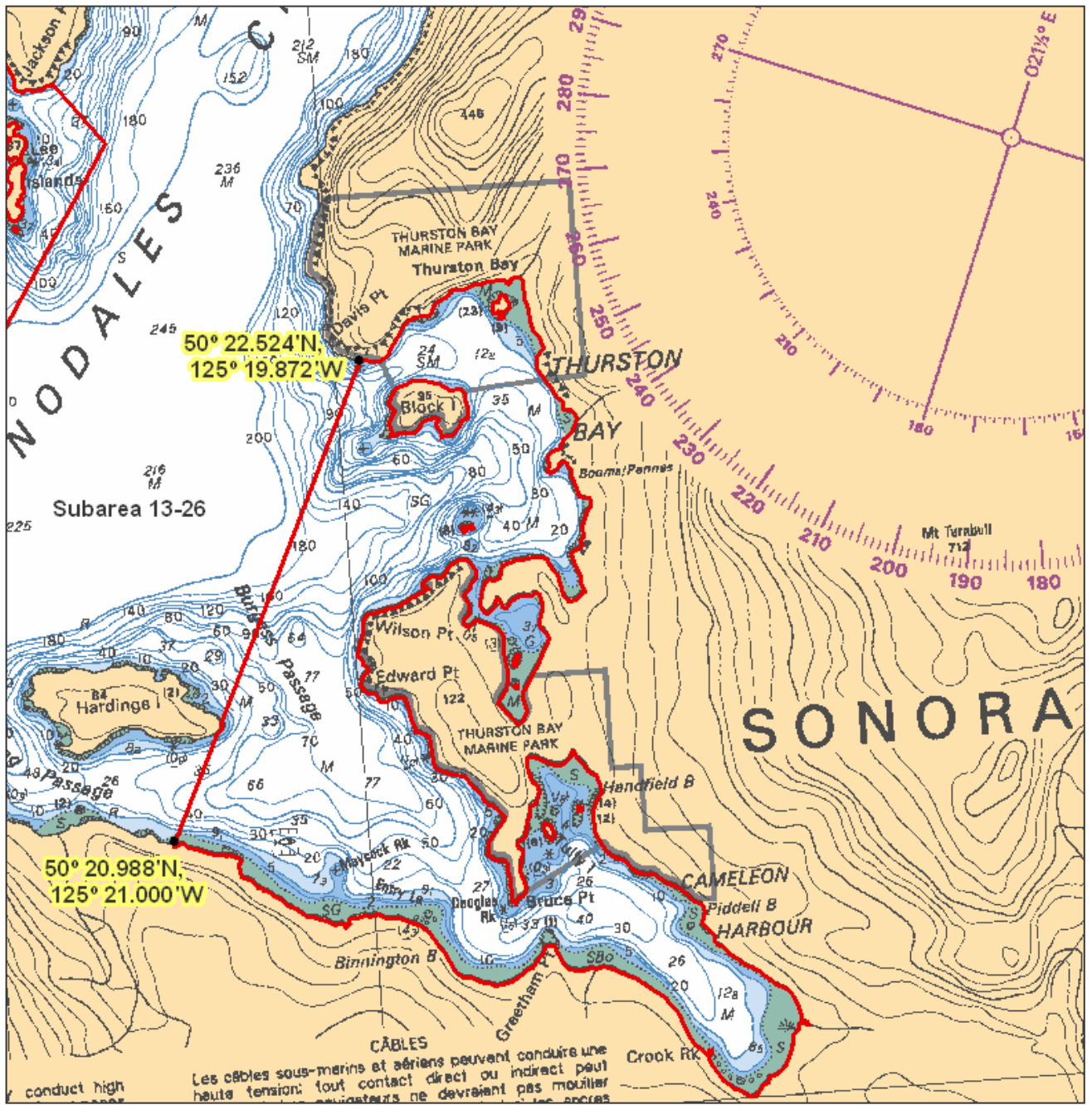
Thurston Bay Chart 3543

In Subarea 13-26, the waters of Thurston Bay and Cameleon Harbour that lie westerly of a line:

from	50°22.524'N	125°19.872'W	Davis Point
to	50°20.988'N	125°21.000'W	Sonora Island

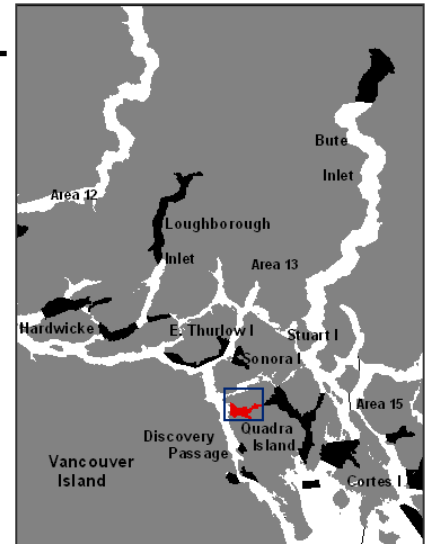


Area 13

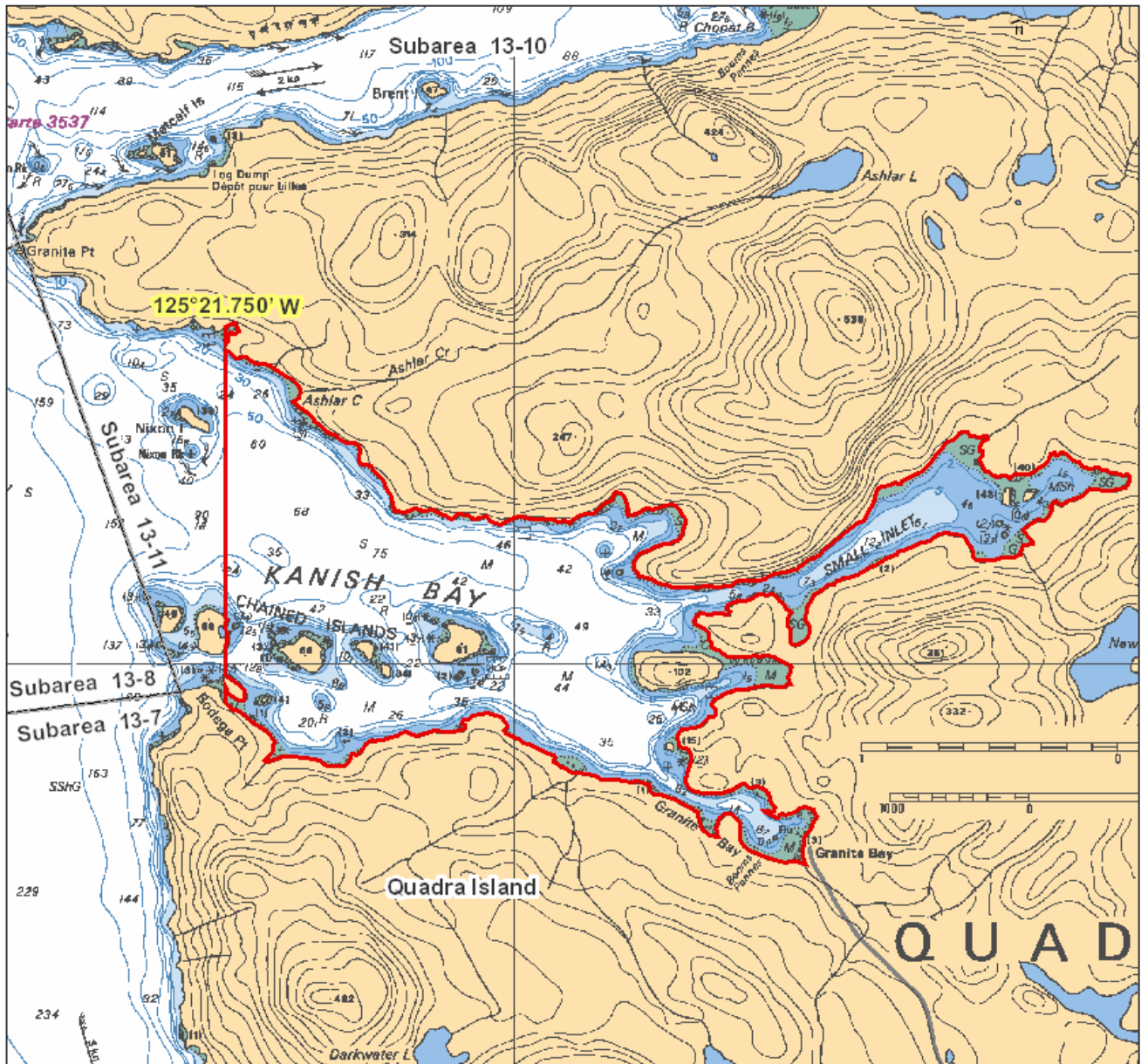


Kanish Bay Chart 3539

Those waters of Kanish Bay in Subarea 13-11 that lie easterly of the meridian passing through 125°21.750' west longitude.



Area 13



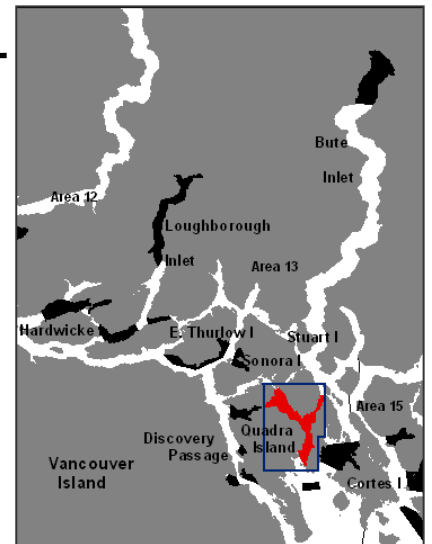
Octopus Islands to Hoskyn Channel Chart 3539

Those waters of Subareas 13-12, 13-13 and 13-18 that lie southerly of a line:

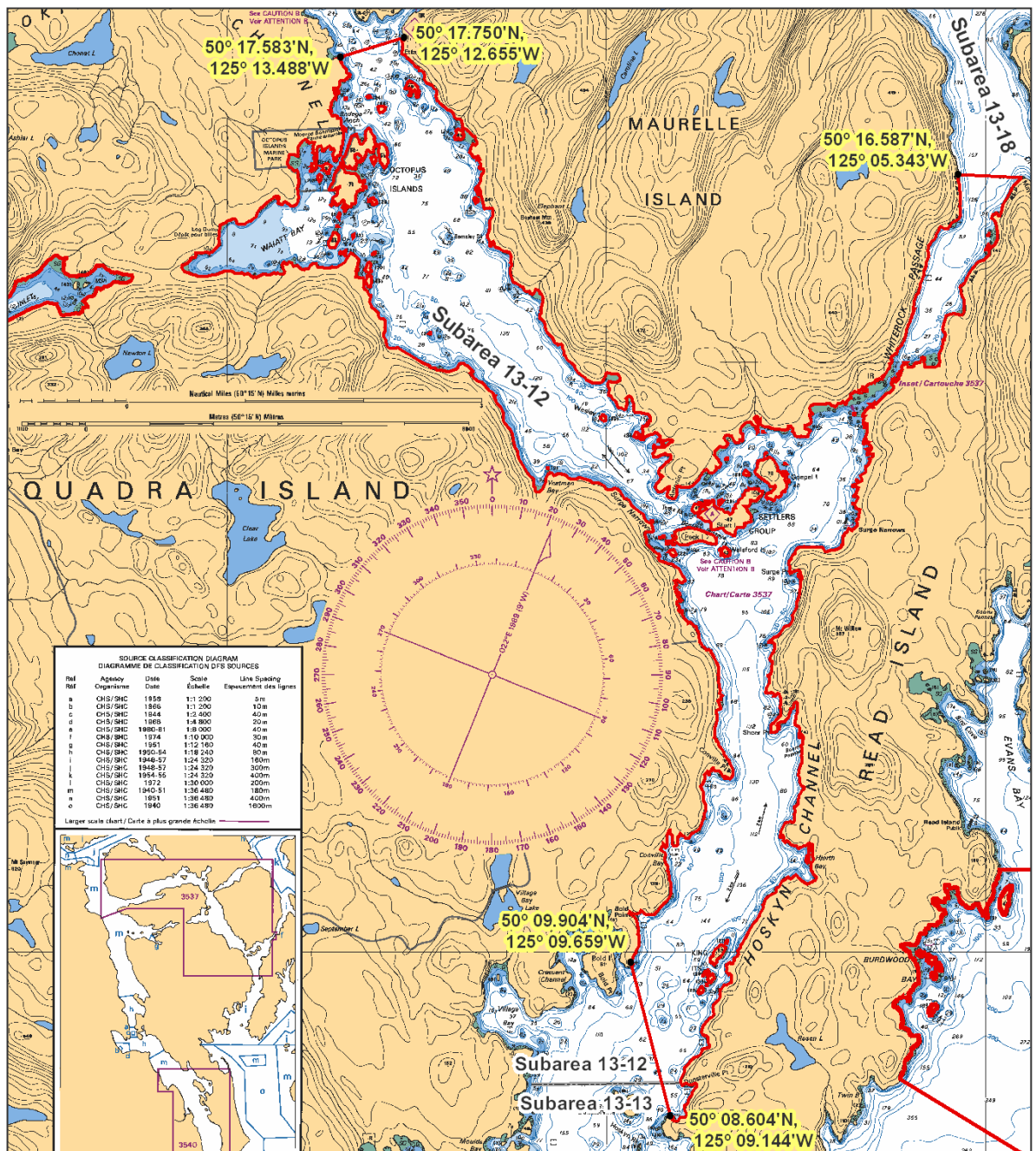
from	50°17.583'N	125°13.488'W	Hole in the Wall
to	50°17.750'N	125°12.655'W	shoreline
then following the southerly shoreline of Maurelle Island to	50°16.587'N	125°05.343'W	north of Etta Point

and northerly of a line:

from	50°08.604'N	125°09.144'W	south of Dunsterville Point
to	50°09.904'N	125°09.659'W	Quadra Island



Area 13

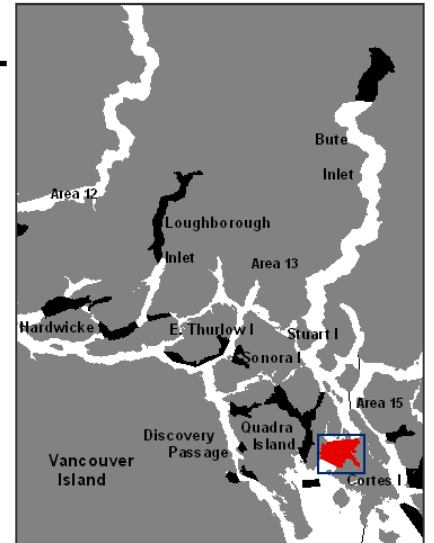


Read – Cortes Islands

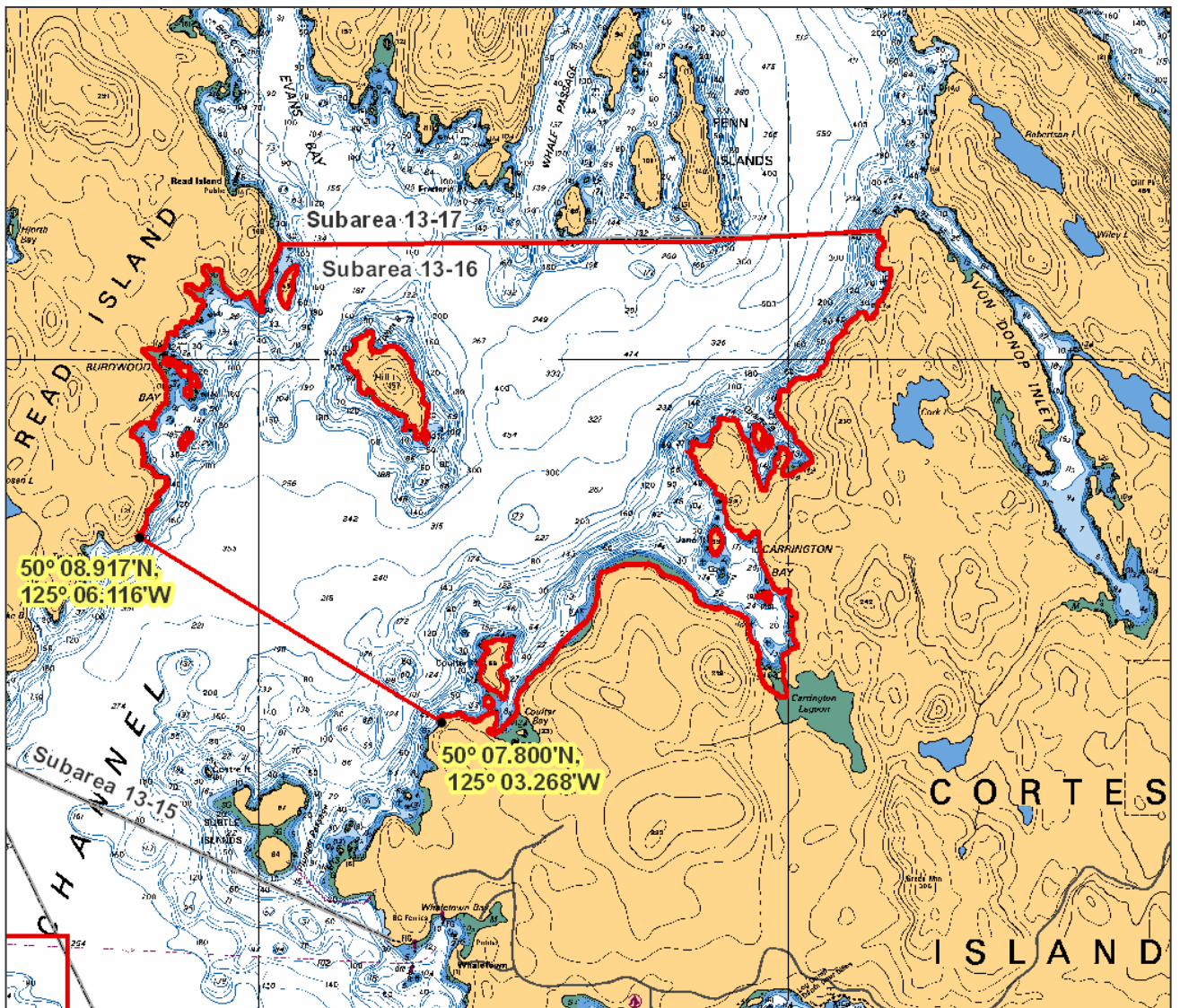
Chart 3538

The waters of Subarea 13-16 that lie northeasterly of a line:

from	50°08.917'N	125°06.116'W	north of Twin Bay
to	50°07.800'W	125°03.268'W	south of Coulter Bay



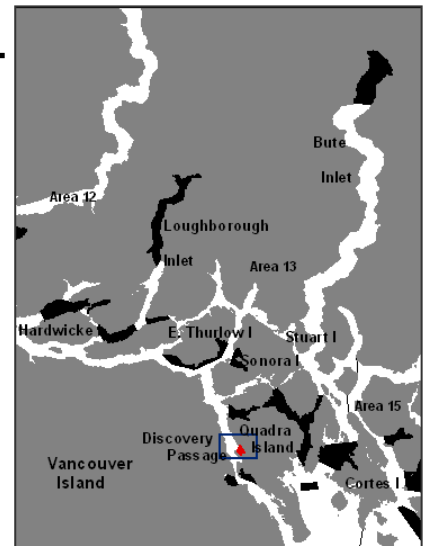
Area 13



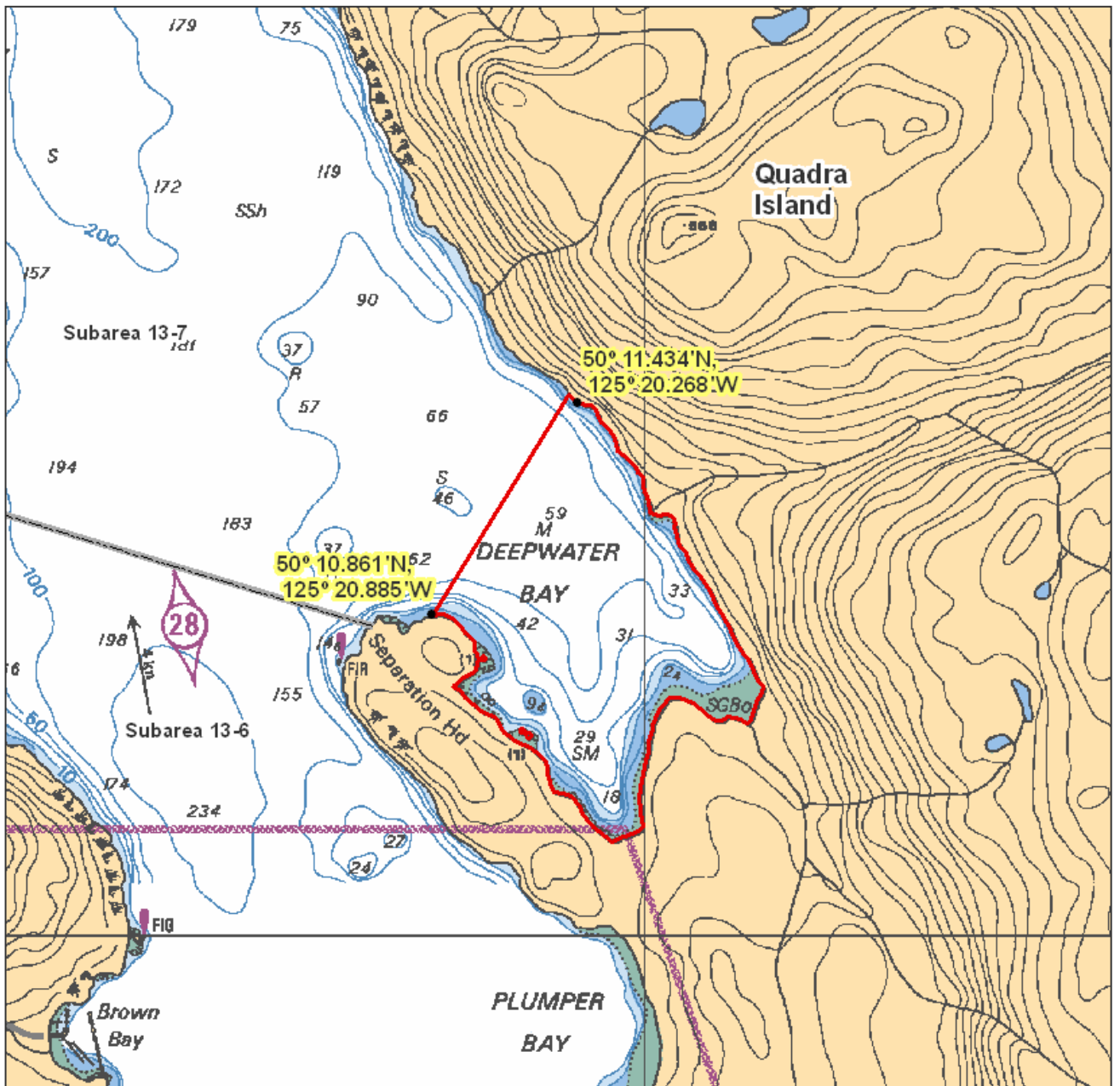
Deepwater Bay Chart 3539

Those waters of Deepwater Bay in Subarea 13-7 that lie southerly of a line:

from	50°10.861'N	125°20.885'W	near Separation Head
to	50°11.434'N	125°20.268'W	shoreline



Area 13



Menzies Bay Chart 3539

Those waters of Subarea 13-3 that lie inside of a line that:

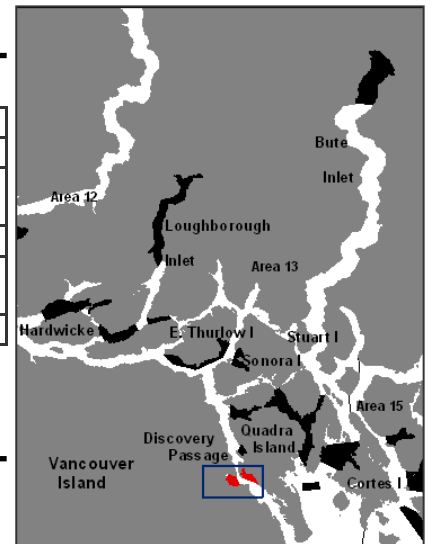
begins at	50°07.715'N	125°21.662'W	Wilfred Point
then to	50°06.953'N	125°21.003'W	west of Race Point
then westerly following the shoreline to	50°06.826'N	125°22.000'W	Huntingford Point
then to	50°06.982'N	125°22.663'W	Bloedel Wharf
then westerly following the shoreline to	50°07.674'N	125°23.400'W	shoreline
then to	50°08.188'N	125°22.874'W	shoreline

then easterly following the shoreline to the beginning point.

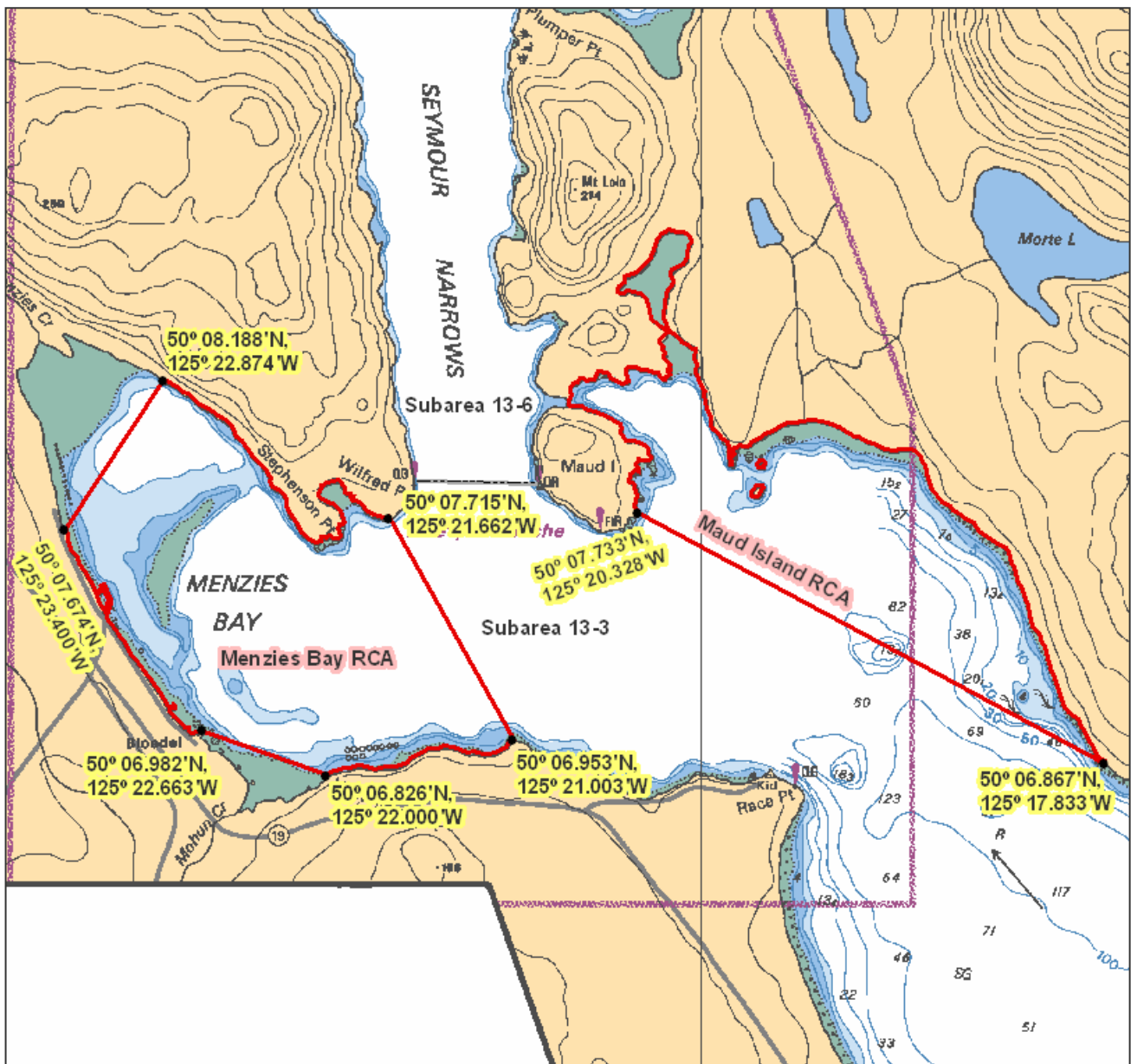
Maud Island Chart 3539

Those waters of Subarea 13-3 that lie northerly of a line:

from	50°07.733'N	125°20.328'W	near Maud Island Light
to	50°06.867'N	125°17.833'W	Quadra Island



Area 13

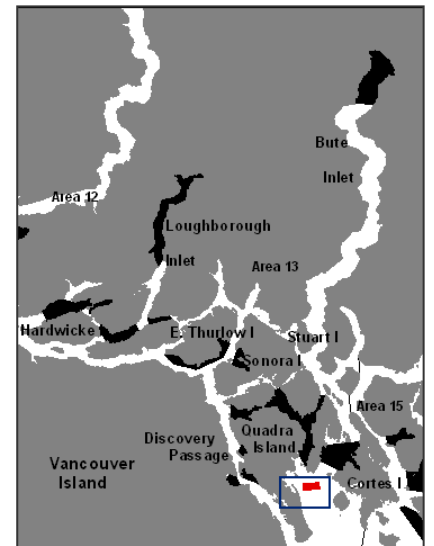


Heriot Bay Chart 3539

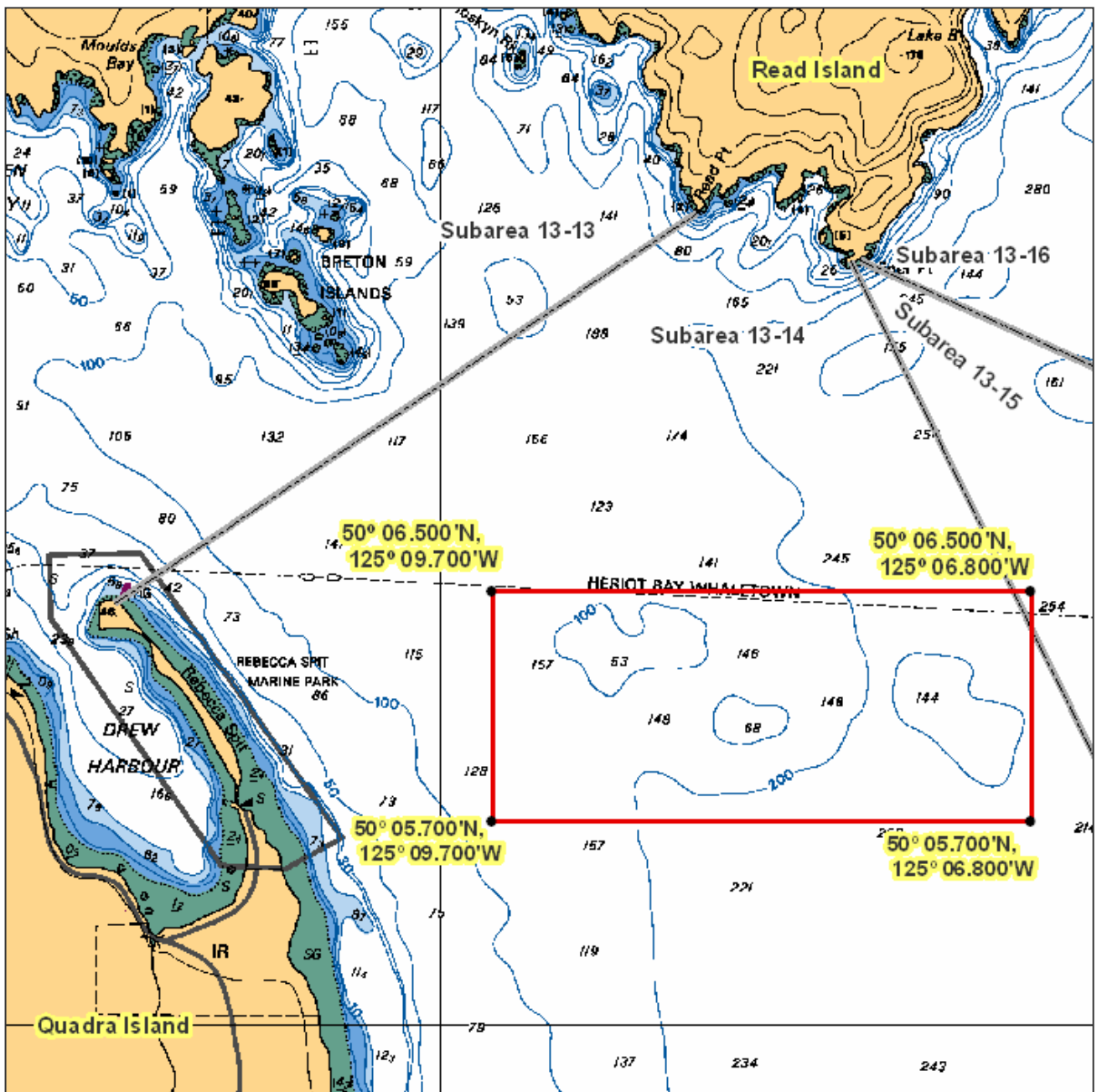
Those waters of Subareas 13-14 and 13-15 that lie inside a line that:

begins at	50°06.500'N	125°09.700'W	in water
then true east to	50°06.500'N	125°06.800'W	in water
then true south to	50°05.700'N	125°06.800'W	in water
then true west to	50°05.700'N	125°09.700'W	in water

then true north to the beginning point.



Area 13



Index

RCA	Page	RCA	Page
Ajax – Achilles Bank	92	Discovery – Chatham Islands	151
Aristazabal Island (West)	16	Domett Point	156
Bajo Reef (West of)	29	Drury Inlet – Muirhead Islands	47
Ballenas Island	120	Dunira	6
Banks Island (West)	12	Duntze Head (Royal Roads)	149
Bate – Shadwell Passage	41	Eden – Bonwick – Midsummer – Swanson Islands	65
Baynes Sound – Ship Point	93	Estevan Point	30
Becher Bay East	153	Fish Egg Inlet	20
Bedwell Harbour	140	Folger Passage	36
Bedwell Sound	31	Forward Harbour	76
Bell Chain Islets	136	Frederick Island	2
Belleisle Sound	59	Gabriola Passage	125
Bentinck Island	152	Galiano Island North	172
Bolivar Passage	44	Goletas Channel	42
Bond Sound	61	Goose Island	18
Bowyer Island	162	Goschen	11
Brentwood Bay	146	Greenway Sound	58
Brethour, Domville, Forrest, Gooch Islands	145	Gull Rocks North	8
Broken Islands Group	34	Gull Rocks South	8
Brooks Bay	27	Haddington Passage	51
Browning Islands to Raynor Group	46	Halibut Bank	170
Browning Passage – Hunt Rock	43	Hardy Bay – Five Fathom Rock	48
Burgoyne Bay	137	Hardy Island	110
Burley Bay – Nepah Lagoon	53	Havannah Channel	70
Burrard Inlet (Eastern)	165	Heriot Bay	88
Bute Inlet North	78	Hodgson Reefs	7
Calvert (West)	19	Holberg Inlet	26
Carmanah	38	Hotham Sound	108
Chancellor Channel East	80	Indian Arm – Croker Island	167
Chancellor Channel West	79	Indian Arm – Twin Islands	166
Checleset Bay	28	Kanish Bay	83
Chrome Island	95	Kitasu Bay	17
Coal Island	143	Kwatsi Bay	60
Coffin Point	128	Lasqueti Island South	97
Copeland Islands	102	Lasqueti South – Young Point	119
Cracraft (West) – Boat Bay	73	Lions Bay	161
Cracraft Point South – Sophia Islands	72	Loughborough Inlet	77
Danger Reefs	126	Lower Clio Channel	68
D'Arcy Island to Beaumont Shoal	148	Lyell Island	3
Dare Point	38	Mackenzie – Nimmo	54
Davie Bay	113	Malaspina Strait	114
De Courcy Island North	124	Maple Bay	137
Deepwater Bay	86	Mariners Rest	159
Departure Bay	122	Maud Island	87
Desolation Sound	101	Mayne Island North	133
Dickson – Polkinghorne Islands	56	McCall Bank	169
Dinner Rock	103	McMullin Group	18

RCA	Page	RCA	Page
McNaughton Point	115	Teakerne Arm	100
Menzies Bay	87	Thetis – Kuper Islands	129
Mid Finlayson Arm	147	Thompson Sound	62
Mittlenatch Island	90	Thormanby Island	116
Moresby (South)	4	Thurston Bay	82
Nanoose – Schooner Cove	121	Topknot	25
Navy Channel	135	Trial Island	150
Nelson Island	110	Trincomali Channel	131
North Danger Rocks	13	Upper Call Inlet	71
Northumberland Channel	123	Upper Centre Bay	160
Nowell Channel	57	Valdes Island East	171
Numas Islands	49	Vargas Island to Dunlap Island	33
Octopus Islands to Hoskyn Channel	84	Viscount Island	69
Otter Passage	15	Wakeman Sound	55
Oyster Bay	91	Walkem Islands to Hemming Bay	81
Pachena Point	37	Wellborne	75
Pam Rock	158	West Bay	160
Pasley Island	163	West Vancouver	164
Passage Island	164	Weynton Passage	64
Patey Rock	142	Woolridge Island	157
Pendrell Sound	99		
Porcher Peninsula	10		
Port Elizabeth	67		
Portland Island	139		
Prevost Island North	134		
Princess Louisa Inlet	106		
Queens Reach East	105		
Queens Reach West	107		
Race Rocks	152		
Read – Cortes Islands	85		
Reynolds Point – Link Island	124		
Russell Island	138		
Ruxton – Pylades Islands	127		
Sabine Channel – Jervis – Jedediah Islands	117		
Salmon Channel	63		
Salmon Inlet	112		
Saltspring Island North	130		
Saranac Island	32		
Saturna (South)	141		
Savoie Rocks – Maude Reef	94		
Scott Islands	24		
Shelter Bay	45		
Sinclair Bank	109		
Sisters Islets	96		
Skookumchuck Narrows	111		
Smith Sound	21		
Sooke Bay	154		
Stephens Island	9		
Storm Islands	22		
Susquash	50		