

COMPOSITE PLANT LIST OF E.R.110, McQUEEN CREEK

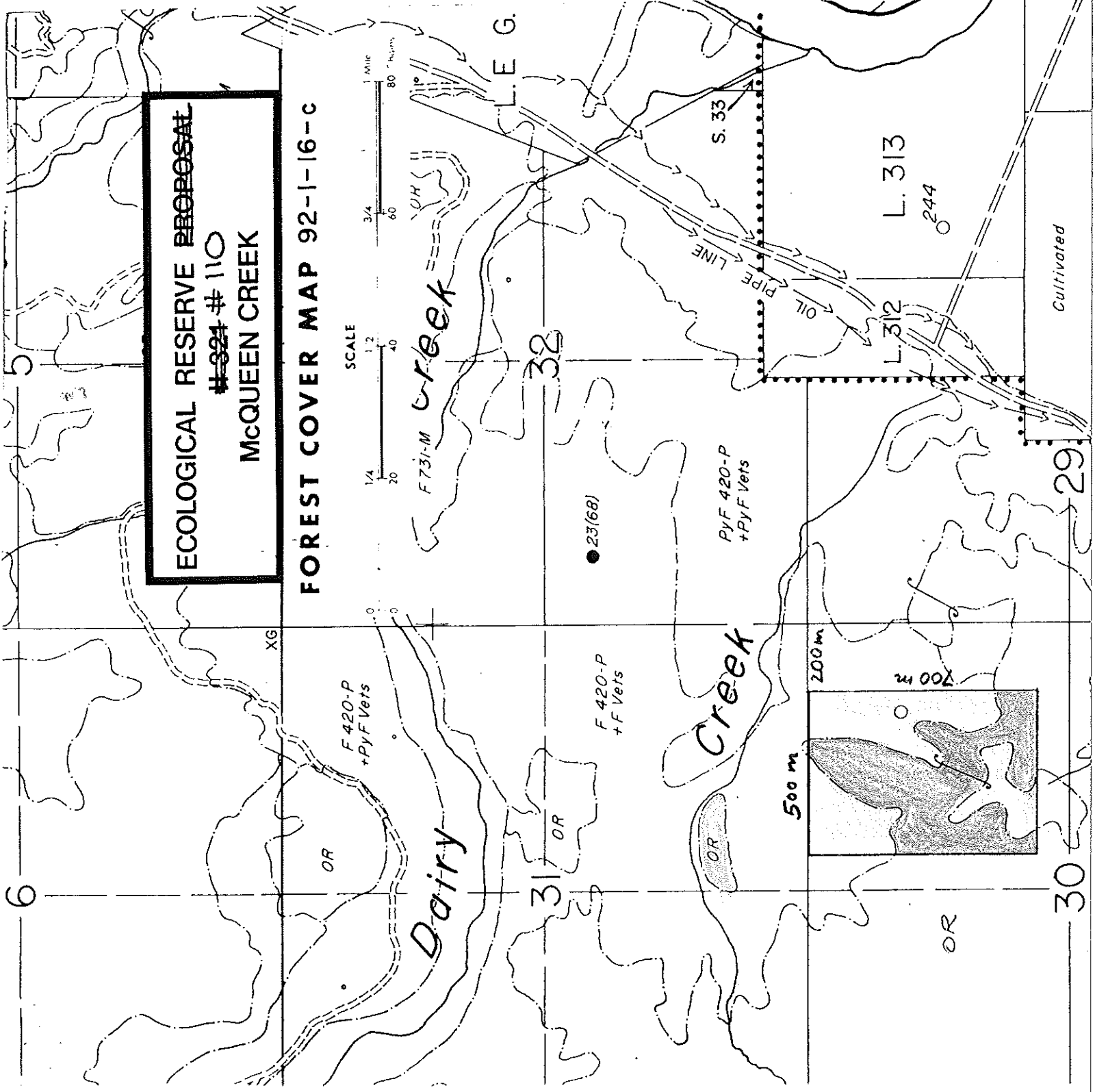
("/" following sp.name = observed on 1979 survey; "/" = observed on 1995 or on both surveys;  
g = primarily in grassland; f = primarily in forest; d = in areas disturbed by selective logging)

compiled by H.Roemer, 95-05-24

Achillea millefolium/g	Erigeron filifolius/g
Agoseris sp.//g	Erigeron linearis/g
Agropyron spicatum/g	Erigeron pumilus//g
Allium cernuum//g	Eriogonum heracleoides/g
Amelanchier alnifolia/f	Festuca campestris/g
Androsace septentrionalis//g	Fritillaria pudica/g
Antennaria dimorpha/g	Galium triflorum/f
Antennaria microphylla//g	Geum triflorum/g
Antennaria parvifolia/g	Goodyera oblongifolia//f
Antennaria umbrinella/g	Heuchera chlorantha/g
Anthoxanthum odoratum/df	Hieracium canadense//f
Arabis holboellii/g	Koeleria macrantha/g
Arnica cordifolia/f	Lathyrus nevadensis/f
Artemisia frigida/g	Lathyrus ochroleucus/f
Aster ciliolatus/f	Linaria dalmatica/g
Aster conspicuus/f	Lithophragma parviflora/g
Astragalus collinus/g	Lithospermum ruderales/g
Astragalus miser/f	Lomatium macrocarpum/g
Balsamorhiza sagittata/g	Mahonia aquifolium/f
Bromus inermis/d	Medicago sativa/d
Bromus tectorum/g	Microsteris gracilis/g
Calamagrostis rubescens//f	Opuntia fragilis//g
Carex concinna/f	Osmorhiza chilensis/f
Carex pennsylvanica/fg	Penstemon fruticosus//rock
Castilleja cf. lutescens//g	Phacelia hastata leucophylla/g
Castilleja thompsonii/g	Pinus contorta/f
Chrysothamnus nauseosus/g	Pinus ponderosa/fg
Collinsia parviflora/fg	Poa cf. grayana/f
Comandra umbellata pallida/g	Poa pratensis//fd
Crepis atrabarba/g	Poa sandbergii//g
Delphinium nuttallianum/g	Populus tremuloides/fd
Descurainia sophia//g	Pseudotsuga menziesii/f
Dodecatheon conjugens/g	Ranunculus glaberrimus//g
Dodecatheon cusickii/g	Rosa acicularis/f
Epilobium angustifolium/f	Rubus strigosus/f
Erigeron compositum (discoid)/g	Saxifraga integrifolia/g
Erigeron compositum (ligulate)/g	Saxifraga integrifolia/g

PARTIAL CHECKLIST OF SPECIES OFE.R.P. 321, McQueen Creek

<i>Pinus contorta</i>	<i>Koeleria cristata</i>
<i>Pinus ponderosa</i>	<i>Lithophragma parviflora</i>
<i>Pseudotsuga menziesii</i> var. <i>glauca</i>	<i>Lithospermum ruderale</i>
	<i>Lomatium macrocarpum</i>
<i>Artemisia tridentata</i>	<i>Opuntia fragilis</i>
<i>Chrysothamnus nauseosus</i>	<i>Penstemon fruticosus</i>
<i>Mahonia aquifolium</i>	<i>Phacelia hastata</i>
<i>Spiraea betulifolia</i>	<i>Poa pratensis</i>
	<i>Poa sandbergii</i>
<i>Achillea millefolium</i>	<i>Ranunculus glaberrimus</i>
<i>Agoseris</i> sp.	<i>Saxifraga integrifolia</i>
<i>Agropyron spicatum</i>	<i>Sellaginella densa</i>
<i>Allium cernuum</i>	<i>Stipa comata</i>
<i>Androsace septentrionalis</i>	<i>Taraxacum officinale</i>
<i>Anemone multifida</i>	<i>Tragopogon dubius</i>
<i>Antennaria parviflora</i>	<i>Zygadenus venenosus</i>
<i>Antennaria rosea</i>	
<i>Antennaria umbrinella</i>	<i>Dicranum scoparium</i>
<i>Arabis holboellii</i>	<i>Hylocomium splendens</i>
<i>Arenaria capillaris</i>	<i>Peltigera aphthosa</i>
<i>Arenaria nuttallii</i>	<i>Pleurozium schreberi</i>
<i>Arnica cordifolia</i>	<i>Ptilium crista-castrensis</i>
<i>Artemisia frigida</i>	<i>Rhytidiadelphus triquetrus</i>
<i>Astragalus miser</i>	<i>Timmia austriaca</i>
<i>Balsamorhiza sagittata</i>	
<i>Bromus tectorum</i>	
<i>Calamagrostis rubescens</i>	
<i>Carex concinnoides</i>	
<i>Carex pensylvanica</i>	
<i>Castilleja</i> cf. <i>lutescens</i>	
<i>Castilleja thompsonii</i>	
<i>Collinsia parviflora</i>	
<i>Crepis atriobarba</i>	
<i>Delphinium nuttallianum</i>	
<i>Descurraia pinnata</i> var. <i>intermedia</i>	
<i>Dodecatheon conjugens</i>	
<i>Erigeron compositus</i>	
<i>Erigeron filifolius</i>	
<i>Erigeron linearis</i>	
<i>Erigeron pumilus</i>	
<i>Eriogonum heracleoides</i>	
<i>Festuca scabrella</i>	
<i>Fritillaria pudica</i>	
<i>Geum triflorum</i>	
<i>Goodyera oblongifolia</i>	
<i>Heuchera cylindrica</i>	
<i>Hieracium canadense</i>	



**ECOLOGICAL RESERVE PROPOSAL**  
~~# 824~~ # 110  
**MCQUEEN CREEK**

**FOREST COVER MAP 92-1-16-c**

ER 110

6

XG

F 420-P  
+ PyF Vets

Dairy

31

F 420-P  
+ F Vets

Creek

PyF 420-P  
+ PyF Vets

● 23(68)

S. 33

PIPE LINE

500 m

200 m

200 m

OR

L. 312

L. 313

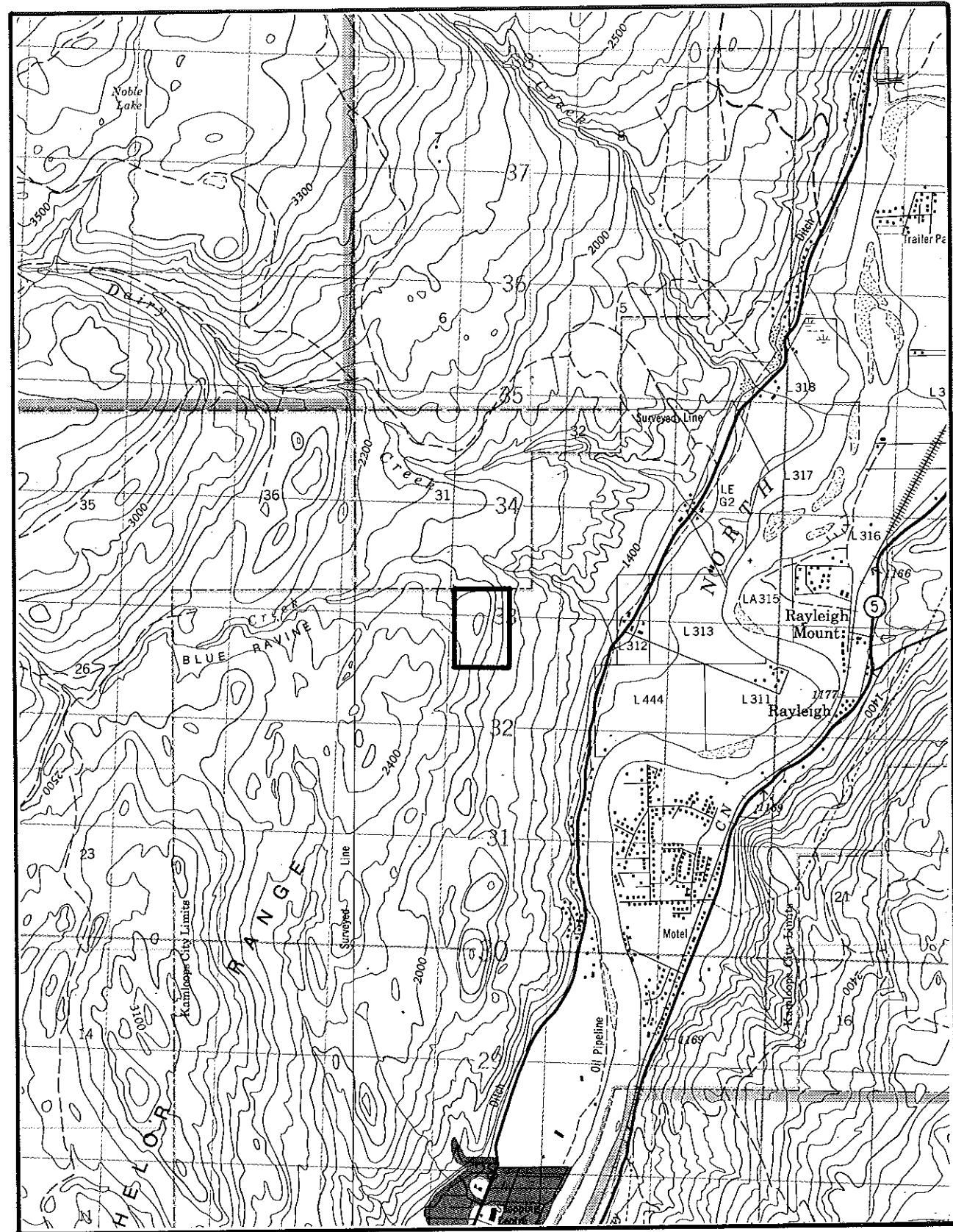
○ 244

30

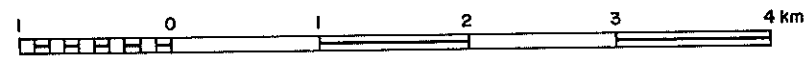
29

L.E.G.

Cultivated



SCALE 1:50 000



N.T.S. No. 92 I/16

**ECOLOGICAL RESERVE No. 110  
McQUEEN CREEK**

ER110

BC7647

213

480

213



KODAK SAFETY FILM

KODAK SAFETY FILM



Mc Queen Creek ER #100



Balsamiza - Ponderosa pine